



कार्यालय प्राचार्य, शासकीय कमलाराजा कन्या स्नातकोत्तर स्वशासी महाविद्यालय, ग्वालियर
GOVT. KAMLA RAJA GIRLS P.G. AUTO. COLLEGE, GWALIOR (M.P.) INDIA
(Affiliated to Jiwaji University, Gwalior under 2(f) & 12(b) NAAC – 'A' Grade Accredited Institute)
www.krgcgwalior.org krgc@rediffmail.com Phone: 0751- 2625495, 0751-2438173

Annual Report of 2020-21



Table of Contents

Principal's Report.....	3
Our Major New Initiatives	5
Overview	7
Courses Offered	9
Scholars registered in Research Centers	16
Areas of focus-	17
Admission of UG and PG Students:	20
Facilities and Services available in Central Library.....	24
Scholarships Schemes	26
Research scholarship/ award	29
Cultural Activities.....	31
Awards and Achievements	32
Extension Activities.....	33
Plantation Program	39
Social Welfare Activities.....	39
State Level	40
Major research Themes.....	43
Publication in National and International Journals/ Anthology	46
Participation in workshops/ Seminars/ conferences	60
Placement Cell.....	75
Examination Cell.....	81
Ph.D Awarded	97
Paper Published in Journals:	101



Annual Report 2020-21

This format outlines the annual reports to be published by all colleges participating in the Madhya Pradesh Higher Education Quality Improvement Project on their websites, by October 31st of each year. Part I is intended as a guide and colleges are free to alter the contents and format as they see fit. Part II, the Appendix (Institutional Performance Data and Financial Reports), is mandatory and colleges are required to report all data as per the attached format and instructions.

Part I 1. The Principal's Report (2 pages)

Highlights the key activities, events, and successes of the past year and briefly describes major new initiatives to be undertaken over the next year.

Principal's Report

Govt. Kamla Raja Girls Post Graduate (Autonomous) College is conveniently situated in a prominent location of south-west Gwalior and having a sprawling campus and provides higher education at the undergraduate and post graduate level to around 11839 girls. We teach our students to work hard and achieve success in all spheres of life. We provide them the opportunity to discover their unique gift and niche, as well as to be equipped and empowered to advance. The college strives to achieve excellence with the resources it has. With the expansion of women's education, the institution seeks to assist and promote research, extension work, and studies in the field of higher education. It offers courses in the fields of law, computer science, life sciences, physical sciences, home sciences, and social sciences. It is the only institution in this region where Urdu language is taught at the Post Graduate level. The college has a marvelous central library, computer labs, sports wing and a canteen to cater the needs of the students and faculty.

Our academic and extracurricular activities reflect our unique Indian traditions and culture. The challenge to "stand up and stand out" is one that we are always ready to accept. Our students demonstrate their talent and skills in ISR, athletics, academics, cultural activities, and semester



outcomes. Our efforts paid off because we put a lot of effort into developing our student's independence and confidence so they could succeed in all aspects of life.

We take great delight in announcing that during the last inspection, our institution had been accredited with "A" grade by NAAC.

Various key activities, events and successes of ours can be outlined as follows –

- In the beginning of the year, we organized orientation classes to prepare our students for the College and to get them introduced with it.
- Our girls won a number of Gold Medals in Academics.
- Our students participated and received awards in National and International events in sports.
- Our student Adya Dixit represented our Nation in International Youth Festival (Asian Countries) and won gold medal thus making us proud.
- Our College is proud for its representation in Republic day Parade almost every year through its students.
- Many of our NCC cadets were selected for several activities such as Youth Exchange Program, National Integrity Camp, Army Camp, Rock Climbing Camp etc.
- We preserve Cultural /Moral values of our students through different Clubs.
- We started Vocational Short Term Certificate Courses to enhance skill of our students.
- Placement Cell of our College is successfully preparing our students to be Entrepreneurs and giving employment to others.
- This cell organized numerous training programs and prepared students to 'Earn while you Learn' as well as to get placements in Industries, Banking sector etc.
- We have fifteen research centres in the College actively engaged in quality research.
- Our faculty members are publishing books /chapters, research papers in National /International journals.
- We are organizing Inter departmental/ Inter College/ Inter State Sharing Programs, Conferences /Seminars /workshops etc. for students as well as for teaching staff.



- Our faculty members are also a part of Conferences /Seminars /workshops etc. organized by others.
- Many of our faculty members are honoured by National / International Awards almost every year.
- Faculty members are frequently invited as Subject Expert /Resource Person in Seminars /Conferences
- We run Cleanliness Drive in Collaboration with NCC and NSS in the College.
- We have started Paperless Correspondence in Campus and some of the notice boards are replaced by Electronic Notice Boards.
- Water Harvesting has been started in the Campus.
- Use of Solar Energy through Solar Panels has been started in the College.
- Student Help Centre and Canteen have been renovated..
- National and International recognition is achieved by the faculty members in the form of Research Awards

Our Major New Initiatives

1. The College has planned to start new short term vocational certificate courses in 20-21 in addition to those running in the previous year. For the wide choice of courses the College has prepared a pool of different certificate courses and will start those ones in which students are showing their keen interest.
2. Existing facilities and infrastructure are not sufficient to satisfy increasing demands so the College is planning to increase and upgrade its existing facilities and infrastructure hence addition of an academic block has been proposed in this session.
3. To augment infrastructure and IT facilities in the session three more smart class rooms, Virtual class rooms, Language Lab, Library equipped with Audio Video System and digitalized etc. will be established.
4. As per demand of time Faculty members and officials are required to upgrade themselves. Therefore the College itself will conduct Faculty Development Program,



Training Programs, and Workshops etc. for teaching as well as nonteaching members in separate batches Members will also be encouraged to sharpen them joining such programs outside the campus and the College may support them.

5. We wish to give exposure and equal weightage to our students so we are planning to nominate Brand Ambassadors in different categories in this session to serve and pay attention in a better way and to have our students' cooperation in various activities.
6. We intend to provide counselling and guidance not only for academics but also to improve their knowledge in a variety of areas such as financial awareness, social and psychological security, legal rights, placement opportunities, etc. Through numerous cells established at the institution.
7. Organisation and conduction of specialised programmes, trainings, and coaching regarding improved and effective communication, net friendliness, and preparation for competitive examinations, fundamental understanding for self-employment, etc. will remain main focus of this session in order to make our pupils skilled and competent.
8. A variety of career-focused and skill-based courses, including those in food processing, small-scale manufacturing, handicrafts, rural resource management, and courses for specific groups, will soon be offered. Career fairs and campus placement activities will be arranged to offer students placement chances. Links with businesses, banks, and organisations that provide employment will be established to improve placement.
9. Efforts will be made to ensure the availability of support system to physically challenged students such as wheel chairs, brail books and E- notice board (Brail) etc. to those who need it.
10. Every academic institution is known for its research output, including its books, articles, journals, patents, etc. In this session, attempts will be made to establish two departments, including Botany and Mathematics as research centres. Currently, sixteen departments in the institution are recognised as research centres.
11. Every institution is recognized by its research work, publications, journals, patents etc. We already have fifteen of our departments recognized research centres and efforts will



- be made to establish three more departments i.e. Botany, Mathematics and Urdu as research centres in this session.
12. To facilitate our researchers, a well-equipped multi-disciplinary Central Instrumentation Laboratory will be established in the year 2021-22.
 13. We are already publishing multi-disciplinary International Journal '*Creative Discourse*'. Incentives to quality and need based Research & Publication are to be granted for encouragement.
 14. A women's study centre will be established to support the socioeconomic development of girls and women. Here, trainings on women's empowerment will be given as well as programmes to educate people about government programmes, empower rural women, and provide counselling and guidance along with provision of ICT-based trainings.
 15. To maintain green and eco-friendly campus activities like Environmental impact assessment, Environmental Audit will be done.
 16. Alumni association will be strengthen so that they can contribute to the holistic development of the students and the institution as well.
 17. To manage internal administration of the College of M.I.S. will be used
 18. Some departments, science block, academic cell, placement cell etc. will be extended, medicinal herbal garden will be developed and sport infrastructure will also be extended. Renovation work will also be done in some departments.

Overview

Briefly introduces the college, **its history and mission, courses offered, areas of focus** etc

History

Founded in 1937, Govt. Kamla Raja Girls Post Graduate Autonomous College, Gwalior, is a pioneer and premier institution for women in higher education in this part of country. It was elevated to the post graduate level in 1970 and autonomous status was conferred on it in 1995. Standing with majestic grace in the heart of the city, the College is housed in one of the palaces of the erstwhile Scindia dynasty. It has an impressive historic main building, Saraswati Mahal



alternated by lush green lawns, tall trees and blocks of various faculties constructed lately. It is a unique College of old and new architecture as well as picturesque natural beauty spread over a vast campus of 53714.60 sq. m.

National Assessment & Accreditation council, Bangalore (NAAC) has accredited this college as B level (equivalent to previous * * * * grade) among autonomous colleges in 2002. During reaccreditation process by NAAC in 2010, college was accredited by B grade. In the third cycle of NAAC reaccreditation, college has been upgraded as A grade College in 2016.

Mission

To provide value education for academic enhancement of girls for sustainable society

- ☐ To translate our vision into action plans.
- ☐ We are committed to provide excellent educational infrastructure and academic ambience conducive for higher learning for girls.
- ☐ To promote all round development of girls through fostering knowledge and skill, making them aware of values of equality, social justice, secularism, patriotism, co-operation and peaceful coexistence to assimilate best traditions and culture and transforming young girls into multifaceted women and global citizen.
- ☐ Our mission is dynamic and its tasks are well defined which make the Institution characteristic not only in this region, state but all over the nation.
- ☐ According to our vision and mission, academic programs and activities are decided. First these are communicated to the stakeholders.



Courses Offered

Stream	Course	Optional Subjects
Arts	B. A.	(Dance - Hindi - History)
	B. A.	(Dance - Hindi - Political Science)
	B. A.	(Drawing and Painting - Economics - English)
	B. A.	(Drawing and Painting - Economics - Hindi)
	B. A.	(Drawing and Painting - Economics - Home Science)
	B. A.	(Drawing and Painting - Economics - Psychology)
	B. A.	(Drawing and Painting - English - History)
	B. A.	(Drawing and Painting - English - Psychology)
	B. A.	(Drawing and Painting - Hindi - History)
	B. A.	(Drawing and Painting - Hindi - Sociology)
	B. A.	(Drawing and Painting - History - Psychology)
	B. A.	(Drawing and Painting - History - Sociology)
	B. A.	(Economics - English - Geography)
	B. A.	(Economics - English - Mathematics)
	B. A.	(Economics - English - Philosophy)
	B. A.	(Economics - English - Political Science)
	B. A.	(Economics - English - Psychology)



कार्यालय प्राचार्य, शासकीय कमलाराजा कन्या स्नातकोत्तर स्वशासी महाविद्यालय, ग्वालियर
GOVT. KAMLA RAJA GIRLS P.G. AUTO. COLLEGE, GWALIOR (M.P.) INDIA
(Affiliated to Jiwaji University, Gwalior under 2(f) & 12(b) NAAC – 'A' Grade Accredited Institute)
www.krgcgwalior.org krgc@rediffmail.com Phone: 0751- 2625495, 0751-2438173

B. A.	(Economics - English - Sociology)
B. A.	(Economics - Geography - Hindi)
B. A.	(Economics - Geography - History)
B. A.	(Economics - Geography - Psychology)
B. A.	(Economics - Geography - Sanskrit)
B. A.	(Economics - Geography - Sociology)
B. A.	(Economics - Hindi - Home Science)
B. A.	(Economics - Hindi - Music)
B. A.	(Economics - Hindi - Political Science)
B. A.	(Economics - Hindi - Psychology)
B. A.	(Economics - Hindi - Sociology)
B. A.	(Economics - Home Science - Political Science)
B. A.	(Economics - Music - Sociology)
B. A.	(Economics - Political Science - Psychology)
B. A.	(Economics - Political Science - Sociology)
B. A.	(English - Geography - History)
B. A.	(English - Geography - Philosophy)
B. A.	(English - Geography - Psychology)
B. A.	(English - Geography - Sociology)



कार्यालय प्राचार्य, शासकीय कमलाराजा कन्या स्नातकोत्तर स्वशासी महाविद्यालय, ग्वालियर
GOVT. KAMLA RAJA GIRLS P.G. AUTO. COLLEGE, GWALIOR (M.P.) INDIA
(Affiliated to Jiwaji University, Gwalior under 2(f) & 12(b) NAAC – 'A' Grade Accredited Institute)
www.krgcgwalior.org krgc@rediffmail.com Phone: 0751- 2625495, 0751-2438173

B. A.	(English - History - Home Science)
B. A.	(English - History - Political Science)
B. A.	(English - History - Psychology)
B. A.	(English - History - Sociology)
B. A.	(English - Home Science - Political Science)
B. A.	(English - Philosophy - Sociology)
B. A.	(Functional Hindi - History - Sociology)
B. A.	(Functional Hindi - History - Political Science)
B. A.	(Functional Hindi - Music - Sociology)
B. A.	(Functional Hindi - Political Science - Sociology)
B. A.	(Geography - Hindi - History)
B. A.	(Geography - Hindi - Home Science)
B. A.	(Geography - Hindi - Philosophy)
B. A.	(Geography - Hindi - Psychology)
B. A.	(Geography - Hindi - Sociology)
B. A.	(Geography - Philosophy - Sanskrit)
B. A.	(Geography - Sanskrit - Sociology)
B. A.	(Geography - Sociology - Urdu)
B. A.	(Hindi - Drawing and Painting - Psychology)



कार्यालय प्राचार्य, शासकीय कमलाराजा कन्या स्नातकोत्तर स्वशासी महाविद्यालय, ग्वालियर
GOVT. KAMLA RAJA GIRLS P.G. AUTO. COLLEGE, GWALIOR (M.P.) INDIA
(Affiliated to Jiwaji University, Gwalior under 2(f) & 12(b) NAAC – 'A' Grade Accredited Institute)
www.krgcgwalior.org krgc@rediffmail.com Phone: 0751- 2625495, 0751-2438173

B. A.	(Hindi - History - Home Science)
B. A.	(Hindi - History - Mathematics)
B. A.	(Hindi - History - Political Science)
B. A.	(Hindi - History - Psychology)
B. A.	(Hindi - Home Science - Music)
B. A.	(Hindi - Home Science - Political Science)
B. A.	(Hindi - Music - Sociology)
B. A.	(Hindi - Philosophy - Political Science)
B. A.	(Hindi - Philosophy - Sociology)
B. A.	(Hindi - Political Science - Sociology)
B. A.	(Hindi - Sanskrit - Sociology)
B. A.	(History - English - Music)
B. A.	(History - Geography - Psychology)
B. A.	(History - Geography - Sanskrit)
B. A.	(History - Home Science - Geography)
B. A.	(HISTORY - HOME SCIENCE - POLITICAL SCIENCE)
B. A.	(History - Home Science - Sanskrit)
B. A.	(History - Home Science - Sociology)



कार्यालय प्राचार्य, शासकीय कमलाराजा कन्या स्नातकोत्तर स्वशासी महाविद्यालय, ग्वालियर
GOVT. KAMLA RAJA GIRLS P.G. AUTO. COLLEGE, GWALIOR (M.P.) INDIA
(Affiliated to Jiwaji University, Gwalior under 2(f) & 12(b) NAAC – 'A' Grade Accredited Institute)
www.krgcgwalior.org krgc@rediffmail.com Phone: 0751- 2625495, 0751-2438173

	B. A.	(History - Mathematics - Sociology)
	B. A.	(History - Music - Psychology)
	B. A.	(History - Music - Sociology)
	B. A.	(History - Philosophy - Sociology)
	B. A.	(History - Political Science - Psychology)
	B. A.	(History - Political Science - Sanskrit)
	B. A.	(History - Political Science - Sociology)
	B. A.	(History - Psychology - Sanskrit)
	B. A.	(History - Psychology - Sociology)
	B. A.	(History - Sanskrit - Sociology)
	B. A.	(History - Sociology - Urdu)
	B. A.	(History-Urdu- Psychology)
	B. A.	(Music - Philosophy - Psychology)
	B. A.	(Music - Political Science - Sociology)
	B. A.	(Political Science - Psychology - Sociology)
	B. A.	(Political Science - Sanskrit - Sociology)
	B. A.	(Political Science - Sociology - Urdu)
Management	B. B. A.	BBA
Computer Science	B. C. A.	BCA



Commerce	B. Com	Commerce
	B. Com	Commerce with Computer Application
Home Science	B. Sc. In Home Science	Home Science
Science	B. Sc.	Biotechnology - Botany – Chemistry
	B. Sc.	Biotechnology - Chemistry – Zoology
	B. Sc.	Botany - Chemistry – Microbiology
	B. Sc.	Botany - Chemistry – Zoology
	B. Sc.	Chemistry - Industrial Chemistry – Mathematics
	B. Sc.	Chemistry - Industrial Chemistry – Zoology
	B. Sc.	Chemistry - Mathematics – Physics
	B. Sc.	Computer Science - Mathematics – Physics
	B. Sc.	Electronics - Mathematics – Physics
	B. Sc.	Chemistry - Microbiology – Zoology
	B. Sc.	Bioinformatics -Botany –Chemistry
	B. Sc.	Bioinformatics - Chemistry – Zoology
Legal Studies Arts	B.A. L.L.B.	Law with Arts
Arts	M. A.	Drawing & Painting
	M. A.	Economics



कार्यालय प्राचार्य, शासकीय कमलाराजा कन्या स्नातकोत्तर स्वशासी महाविद्यालय, ग्वालियर
GOVT. KAMLA RAJA GIRLS P.G. AUTO. COLLEGE, GWALIOR (M.P.) INDIA
(Affiliated to Jiwaji University, Gwalior under 2(f) & 12(b) NAAC – 'A' Grade Accredited Institute)

www.krgcgwalior.org krgc@rediffmail.com Phone: 0751- 2625495, 0751-2438173

	M. A.	English
	M. A.	Geography
	M. A.	Hindi
	M. A.	History
	M. A.	Music Instrument
	M. A.	Music Vocal
	M. A.	Philosophy
	M. A.	Political Science
	M. A.	Sanskrit
	M. A.	Sociology
	M. A.	Urdu
Commerce	M. Com.	Commerce
Science	M. Sc.	Biotechnology
	M. Sc.	Botany
	M. Sc.	Chemistry
	M. Sc.	Mathematics
	M. Sc.	Physics
	M. Sc.	Zoology
Home Science	M. Sc. (Home	Food and Nutrition



	Science)	
	M. Sc. (Home Science)	Family Resource Management
	M. Sc. (Home Science)	Human Development
Special Course	Diploma Course	PGDCA
Short Term Certificate Course	6 Months Certificate Course	Food Technology

Scholars registered in Research Centres

S.no.	Subject	No. of scholars registered
1	Biotechnology	03
2	Commerce	01
3	Drawing & Painting	03
4	English	01
5	Geography	01
6	Hindi	03
7	History	01
8	Home Science	02
9	Music	05
10	Political Science	03
11	Sanskrit	02
12	Sociology	01



13	Urdu	03
14	Zoology	04
Total		33

Areas of focus-

Our Mission statement is based on sustainable development of our students, institution, society and thus the development of the nation. Our focus is on

INCLUSION

Open, welcoming, supportive and committed to equity and diversity

EXCELLENCE

Quality and excellence underpins in teaching-learning, skill development, and research everything we do.

SUSTAINABILITY

To achieve sustainability with traditional knowledge and skill development in students

PRIDE

Institution perceives pride in quality of experience faculty, diversity of our students, the prestigious and extended social responsibility.

DIVERSITY AND EQUAL OPPORTUNITY

Institution is determined to cater academic facilities to diverse category of students without any discrimination and expand spectrum of discipline.

ACCOUNTABILITY

Accountable for providing Quality education for Holistic development of learner sand to make them a responsible citizen



NURTURE

With utmost responsiveness to the needs of all stakeholders, committed to nurture them for development in their academic, social. Physical, emotional, cultural, spiritual and moral wellbeing

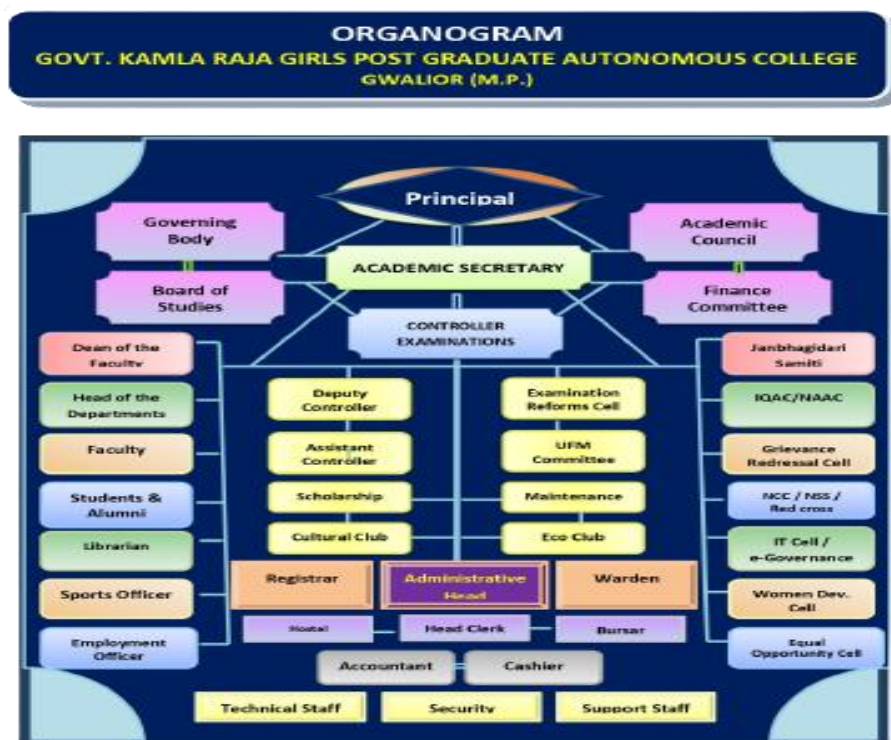
3. Senior Management Team and Board of Governors (1 page)

Lists the members of the senior management team (Principal, Registrar, Deans etc.) and members of the Board of Governors including their designations and professional backgrounds.

Principal : **Dr. M.R. Kausal**

Academic Secretary : **Dr. Sanjay Swarnkar**

Administrative Hierarchy





4. Admission Statistics (1 page)

- The number of applicants at the UG and PG level who ranked the college as their 1st, 2nd and 3rd preference, the number of applications received for PhD courses, and the number of students admitted at each level as per the following format. Applications UG, PG PhD

Applications	UG	PG	PGDCA	PhD
Applications that ranked the college as the 1 st preference	Data available with deptt of higher education			NA
Applications that ranked the college as the 2 nd preference				
Applications that ranked the college as the 3 rd preference				
Total number of applications received				
Number of students admitted	3076	1491	25	235

Data Source: E-pravesh portal, records of the affiliating university •

A brief demographic profile of students admitted (in terms of gender, caste, whether from MP etc.)



Admission of UG and PG Students:

Gender	Name of the Course	Subject	Seats	Gen	OBC	SC	ST	Total	% of students from the State	% of students from other states
Female										
PG										
	M.A.	M. A.	Drawing & Painting		05	04	10	00	19	
		M. A.	Economics		35	21	08	01	65	
		M. A.	English		56	19	14	00	89	
		M. A.	Geography		17	14	16	02	49	
		M. A.	Hindi		31	39	16	00	86	
		M. A.	History		25	49	13	00	87	
		M. A.	Music Instrument		00	00	00	00	00	
		M. A.	Music Vocal		04	02	06	00	12	
		M. A.	Philosophy		07	13	09	00	29	



कार्यालय प्राचार्य, शासकीय कमलाराजा कन्या स्नातकोत्तर स्वशासी महाविद्यालय, ग्वालियर
GOVT. KAMLA RAJA GIRLS P.G. AUTO. COLLEGE, GWALIOR (M.P.) INDIA
 (Affiliated to Jiwaji University, Gwalior under 2(f) & 12(b) NAAC – 'A' Grade Accredited Institute)
www.krgcgwalior.org krgc@rediffmail.com Phone: 0751- 2625495, 0751-2438173

		M. A.	Political Science		35	24	14	00	73		
		M. A.	Sanskrit		14	22	12	00	48		
		M. A.	Sociology		21	51	18	00	90		
		M. A.	Urdu		01	10	00	00	11		
	M.Co m	M. Com.	Commerce		243	192	57	01	493		
	M.Sc.	M. Sc.	Biotechnol ogy		09	06	05	00	20		
		M. Sc.	Botany		28	11	09	00	48		
		M. Sc.	Chemistry		24	22	05	00	51		
		M. Sc.	Mathemati cs		41	32	15	01	89		
		M. Sc.	Physics		35	09	07	00	51		
		M. Sc.	Zoology		20	20	14	01	55		
		M. Sc. (HS)	Food and Nutrition		08	08	03	00	19		



कार्यालय प्राचार्य, शासकीय कमलाराजा कन्या स्नातकोत्तर स्वशासी महाविद्यालय, ग्वालियर
GOVT. KAMLA RAJA GIRLS P.G. AUTO. COLLEGE, GWALIOR (M.P.) INDIA
 (Affiliated to Jiwaji University, Gwalior under 2(f) & 12(b) NAAC – 'A' Grade Accredited Institute)
www.krgcgwalior.org krgc@rediffmail.com Phone: 0751- 2625495, 0751-2438173

		M. Sc. (HS)	Family Resource Management		00	00	00	00	00		
		M. Sc. (HS)	Human Development		03	04	00	00	07		
Total					662	572	251	06	1491		
PG - Diploma											
	Diploma Course		PGDCA		07	13	05	00	25		
Total					07	13	05	00	25		
UG											
	B.A.		B.A.		314	766	386	09	1475		
	B.COM		B.COM		366	372	100	02	840		
			B.COM COMP.		32	31	15	01	79		
	BBA		BBA		16	13	02	00	31		
	BCA		BCA		12	07	02	00	21		
	B.SC		B.SC (BIO)		99	119	59	02	279		



		B.SC (MATHS)		65	77	18	00	160		
		COMP. SCIENCE		43	61	13	00	117		
		HOME SCIENCE		06	06	03	00	15		
	BA LLB	BALLB		28	19	11	01	59		
Total				981	1471	609	15	3076		

5. The Student Experience (4 pages)

Briefly describes student life in the college, the facilities available to students (accommodation, meals, libraries, sporting facilities etc.), and student support services (financial aid, medical facilities, counseling services, mentoring programs etc.). Highlights, in particular, major student welfare initiatives over the past year.

Infrastructural facilities available to students - Classrooms, Smart classrooms, laboratories and equipment, Hostel; Canteen; Garden; Students common room, Auditorium, Sports Complex & other facilities :

- Class Room - 135
- Smart Classrooms - 27
- Laboratories - 43
- Major Equipment's-UV Spectrophotometer, Refrigerated Centrifuge,- Deep Freeze Atomic absorption spectrophotometer etc.
- Common Research Lab - 1(Central Instrumentation Facility)



- Hostel - 02
- Smart Canteen - 01
- Garden - 05
- Students common room - 01
- Auditorium - 01
- Sports Complex - No
- Sports grounds - 02
- Gym - Traditional and Open Gym available
- Library as a learning resource- advisory committee, its composition, facilities & services (e & print), annual improvement initiatives

Facilities and Services available in Central Library -

Total No. of Print Books	142448
Print Journals	25
Fully Automated Library (SOUL Software)2.0	
E-Books	10351
E-Journals	38000
News Papers	13
Magazines	17
Reprographic Machine	02
E-Library	20 Computers
Online Resources	Inflibnet and delnet available
Book Bank Scheme	available



- Student support services:
- ✓ IT enabled services

- All departments are Wi-Fi enabled.
- Online Fees Submission
- Online compilation and declaration of Results
- MIS implemented
- Online application and approval of Scholarships
- Digital display of necessary information and notices for students
- Help center with IT facility has been established in the college as student support Facility.
- Use of IT facilities for teaching
- e-learning resources like Infliibnet, and DELNET available for teaching
- Smart Class Rooms

- ✓ Personal enhancement & development schemes- NCC, NSS, Facilities for physically challenged & slow learners; Tutor-Guardian Scheme, Grievance Redressal Cell, Entrepreneurship Cell, Remedial classes, Career Guidance Cell.

Personal enhancement & development schemes

- NSS : College NSS wing comprising of 324 volunteers
- NCC: A separate NCC office with a store room. College NCC wing comprising of 56 cadets
- Grievance Redressal Cell: Grievance Redresses Cell deals with the grievances expressed by students.
- Facilities for physically challenged & slow learners: Equal Opportunity Cell has been established in the College to address the needs of the differently abled students. Samridhhi group has been designed to help slow learner in academics, in each section of all the classes.



- Tutor-Guardian Scheme: Tutor–Guardian Scheme exists in the College. Respective Cell organizes periodical meeting with parents and collect feedbacks. Suggestions and advices are received.
- Remedial Classes: Remedial classes are conducted regularly to meet the requirements of the students.
- Extension lecture series in various disciplines is conducted to impart education by experts available in various streams
- Short term certificate courses are conducted in various subjects to provide value added education and enhance skill.
- Entrepreneurship Cell/Placement Cell: Placement Cell is functioning in the College. Periodically campus interviews and placement relevant activities are organized for the benefit of the students.

Other Facilities

- Career guidance cell organizes various carrier oriented training programs in different fields. It also provides platform to sharpen their skill to seek employment.
- Tutor-Guardian Scheme
- Grievance Redressal Cell
- Entrepreneurship Cell
- Remedial classes

Scholarships Schemes

- ✓ Financial assistance (scholarships/ schemes for SC/ST/OBC/ minority, Group & Health Insurance Schemes)

Various scholarship schemes are implemented for students' welfare and academic support by state and central Government:



Post Metric Scholarship Schemes (Benefits of only one scheme is allowed)

- मुख्यमंत्रीजनकल्याण (शिक्षाप्रोत्साहन) योजना
- Post Metric Scholarship Scheme [OBC Students]
- Post Metric Scholarship Scheme [SC Students]
- Post Metric Scholarship Scheme [ST Students]
- Mukhya Mantri Medhavi Vidhyarti (MMVY) Yojana (MMVY)

Awas Sahayata Schemes (Benefits of only one scheme is allowed)

- Awas Sahayta Yojana [SC Students]
- Awas Sahayta Yojana[ST Students]

Schemes of Higher Education Dept

- Gaon Ki Beti Yojna
- Pratibha Kiran Scholarship Yojna

Other Schemes

- Samany Chhatrvrati
- Divyang Chhatrvrati
- Maharishi Valmiki Scheme
- General/OBC Students Scholarship Scheme
- Merit Scholarship Scheme

Scholarships sponsored by National agencies

- Central sector (by Central Government)



कार्यालय प्राचार्य, शासकीय कमलाराजा कन्या स्नातकोत्तर स्वशासी महाविद्यालय, ग्वालियर
GOVT. KAMLA RAJA GIRLS P.G. AUTO. COLLEGE, GWALIOR (M.P.) INDIA
(Affiliated to Jiwaji University, Gwalior under 2(f) & 12(b) NAAC – 'A' Grade Accredited Institute)
www.krgcgwalior.org krgc@rediffmail.com Phone: 0751- 2625495, 0751-2438173

- Private and Public Sector Organization
- Inspire
- Minority

S. No.	Schemes	No. of Students	Amount (In Rs.)
1.	Post Metric Scholarships for S.T. Students	6	29347.6
2.	Post Metric Scholarships for S.C. Students	1795	7918825
3.	Post Metric Scholarships for O.B.C. Students	3977	19839049/-
4.	Gaon ki Beti Yojna	332	1666000/-
5.	Pratibha Kiran Yojna	8	40,000/-
6.	Awaas Sahitya Yojna	449	5786500/-
7.	Central Sector	241	3330000
8.	Minority Scholarships	26	104000
9.	Mukhya Mantri Medhavi Yojna	864	
10.	Book Bank Distribution	756	496080
11.	Sambal Yojna	52	
12.	VRAET Gwalior	12	24000
13.	Nirdhan chatra Sahayta K.R.G college	30	34268



	Gwalior		
--	---------	--	--

6. Student Achievements (5 page)

Highlight the most significant academic and non-academic achievements of students over the past year. This can include major academic awards and scholarships received student research, and sports and other extracurricular activities. Focuses, in particular, on profiling top achievers and describing how resources provided by the college helped these students succeed.

ACADEMIC

- Merit

S.No.	Name of the award/medal/meritorious scholarship	Name of the Recipient	Class	Area of Achievement
	Due to COVID Pandemic event could not be organised			

Research scholarship/ award

1.	RJNF	RANJANA SANJAY	Ph.D Scholar	Hindi
2.	UGC NET/	NIDHI SACHAN	Ph.D Scholar	Home Science (Food and



कार्यालय प्राचार्य, शासकीय कमलाराजा कन्या स्नातकोत्तर स्वशासी महाविद्यालय, ग्वालियर
GOVT. KAMLA RAJA GIRLS P.G. AUTO. COLLEGE, GWALIOR (M.P.) INDIA

(Affiliated to Jiwaji University, Gwalior under 2(f) & 12(b) NAAC – 'A' Grade Accredited Institute)

www.krgcgwalior.org krgc@rediffmail.com Phone: 0751- 2625495, 0751-2438173

	JRF			Nutrition)
3.	UGC NET/ JRF	ARNIKA YADAV	Ph.D Scholar	Hindi
4.	UGC NET/ JRF	SAPNA PATHAK	Ph.D Scholar	Hindi
5.	UGC NET/ JRF	RENU SINGH	Ph.D Scholar	Hindi
6.	UGC NET/JRF	SUMAN YADAV	Ph.D Scholar	Hindi
7.	UGC NET/JRF	ANITA BANSAL	Ph.D Scholar	Hindi
8.	UGC NET/JRF	ALQUAMA ANSARI	Ph.D Scholar	Drawing and PaintinG
9.	UGC NET/JRF	ABHA YADAV	Ph.D Scholar	Hindi
10	UGC NET/ JRF	SHIVANGANA BHADORIA	Ph.D Scholar	Home Science (Food and Nutrition)
11	UGC NET/ JRF	CHITRANGADA PARAG	Ph.D Scholar	Home Science
12	STATE GOVT.	SAHANA KEN	Ph.D Scholar	History



13	STATE GOVT.	MAMTA SAINI	Ph.D Scholar	Sociology
14	STATE GOVT.	MONIKA MOURYA	Ph.D Scholar	Hindi
15	NET JRF	POORNIMA YADAV	Ph.D Scholar	History
16	NET JRF	BHAVANA SHARMA	Ph.D Scholar	Music
17	NET JRF	ANUSHKA YADAV	Ph.D Scholar	Sociology
18	NET JRF	PRAGATI BARETHIA	Ph.D Scholar	
19	NET JRF	RUCHI DHAKAD	Ph.D Scholar	Geography

Cultural Activities

- Participation

S.no	Name of the event	District Level	State Level	University	National Level
1	Program On Shahid Diwas	-	-	-	-
2	Shlok pathh Competition For Bhavbhuti Samaroh	-	-	-	-
3	Debate Competition Bhavbhuti Samaroh	-	-	-	-
4	Hindi Bhashan Competition	-	-	-	-



	Bhavbhuti Samaroh				
5	Sanskrit Bhashan Competition Bhavbhuti Samaroh	-	-	-	-
6	Essay Writing Competition Bhavbhuti Samaroh	-	-	-	-
7	Essay writing competition	-	-	-	-
8	G.K.Competition about Road Safety	-	-	-	-

Awards and Achievements

Name of the student	Event	Award/Achievement
Shruti Sharma	Yuva Samvad	MP C.M. AWARD
Sweta Mishra	Hindi Bhashan	First Place
Kunika Goswami	Swasawar Shlok Path	First Place
Poonam Parsadiya	Hindi/ Sanskrit Essay Writing	First Second

✓ Major student welfare initiatives over the past year

- Earn while you learn
- Equal Opportunity Cell
- Various scholarship Cell
- Grievance Redressal Cell
- Women Development Cell
- Different cells constituted for welfare of the students



- Mentoring Cell
- Sexual harrassment cell
- Reward for best performerws

Extension Activities

Name of the activity	Organising unit/ agency/ collaborating agency	Name of the scheme	Year of the activity	Number of students/teachers participated in such activities
Free Drinking Water distribution to the passengers at the Railway Station Gwalior	NSS	Sevarth	2020-21	44
"Swaranjali" online platform on Facebook & Youtube for the Online free music classes conducted by Dr. Anoop Moghe Faculty member of Music Dept. 30 videos	Music Departent	Margdarshan	2020-21	217
'Arambhika' online platform on Facebook & Youtube for the Online free music classes conducted by Dr. Smita	Music Department	Margdarshan	2020-21	198



कार्यालय प्राचार्य, शासकीय कमलाराजा कन्या स्नातकोत्तर स्वशासी महाविद्यालय, ग्वालियर
GOVT. KAMLA RAJA GIRLS P.G. AUTO. COLLEGE, GWALIOR (M.P.) INDIA

(Affiliated to Jiwaji University, Gwalior under 2(f) & 12(b) NAAC – 'A' Grade Accredited Institute)

www.krgcgwalior.org krgc@rediffmail.com Phone: 0751- 2625495, 0751-2438173

Sahastrabudhe Faculty member of Music Dept 56 videos				
Online poster display on COVID Awareness by the students from their homes	NSS	ISR-Jagrirti	2020-21	54
The Legal Cruise online platform on Youtube, Instagram, Facebook & Wordpress.com from Law students of K.R.G. College, Gwalior to spread legal awareness to the society started 12 Videos	Law Department	Margdarshan	2020-21	212 Subscribers
Contribution of KRGC in the Democratic Procedure of the Country on 03/11/2020 in collaboration with District Election Office	College	ISR Jagriti	2020-21	63
Environment awareness by the NSS volunteers by the plantation near their homes	NSS	ISR-Jagrirti	2020-21	36
COVID-19 Vaccination Campaign in Collaboration with VISM College,	NSS	Sevarth	2020-21	44



Gwalior				
NSS Students of K.R.G. College Participated in Polio Awareness Campaign at Nai Sadak Gwalior	NSS	Sevarth	2020-21	57
Plantation activity done by the Faculty and Students at Nehru Park, Kampoo, Gwalior	NSS	Haritima- Harit Vasundhara	2020-21	38
Plantation at Chatri Theme Road by NCC Voulanteers on	NCC	Haritima- Harit Vasundhara	2020-21	31
Dr. Madhu Laxmi Sharma received an award for an outstanding contribution in Environment on International Women's Day by Devi Ahilya Charitable Trust DEESHA in the presence of Health and Family Welfare Minister of Rajasthan	ISR	Haritima- Harit Vasundhara	2020-21	1



On the occasion of "Azadi ka Amrit Mahotsav" the Students of K.R.G College celebrated and organized an awareness Bicycle rally from college campus to the statue of Rani Laxmi Bai, Phoolbagh	Sports	Azadi Ka Amrit Mahotsav	2020-21	182
Circle formation for Social distancing during COVID-19 pandemic by the volunteer students at Naya Bazar and Lohiya Bazar	ISR	ISR-Jagrirti	2020-21	37
Cleanliness Awareness Rally for cleanliness drive and waste Disposal by NCC Cadets Outside K R Hospital & Kampoo	NCC	Shuchita	2020-21	56
Faculty of the College & Lions Club distributed Masks to the Citizens of Gwalior under the 'Roko-Toko' Campaign	NCC	ISR-Jagrirti	2020-21	64
Plantation at Cancer Pahadiya by Faculty and Voulanteers of NSS	NSS	Haritima -Harit Vasundhara	2020-21	41



कार्यालय प्राचार्य, शासकीय कमलाराजा कन्या स्नातकोत्तर स्वशासी महाविद्यालय, ग्वालियर GOVT. KAMLA RAJA GIRLS P.G. AUTO. COLLEGE, GWALIOR (M.P.) INDIA

(Affiliated to Jiwaji University, Gwalior under 2(f) & 12(b) NAAC – 'A' Grade Accredited Institute)

www.krgcgwalior.org krgc@rediffmail.com Phone: 0751- 2625495, 0751-2438173

Ritika Chaurasiya B.A.III ,Divya Mahor B.A. 1 ,Kusum Jatav B.Com III &Kashish Shakya B.Com II year Students organized Rangoli Competition to encourage the children of slum Area school run by Sevarth Jan Kalyan unit at Beti Bachao Churaha , Sikander Kampoo Area on 22.4.21	IQAC	ISR-Jagrikti	2020-21	22
World Hand Hygeine Day at different places of City on	NSS	Shuchita	2020-21	36
Plantation in Madhav Nagar, Ram Mandir Chauraha, Shivaji Park in collaboration with ' Sakriy Samaj Seva'on 11/06/2021	IQAC	Haritima -Harit Vasundhara	2020-21	30
Food Distribution in Tribal Area at Adivasi Ka Pura	ISR	Sevarth	2020-21	24
Mask Distribution to Needy People and Covid Awareness Near Nehru Park Road by the students	NSS	Sevarth	2020-21	29



कार्यालय प्राचार्य, शासकीय कमलाराजा कन्या स्नातकोत्तर स्वशासी महाविद्यालय, ग्वालियर
GOVT. KAMLA RAJA GIRLS P.G. AUTO. COLLEGE, GWALIOR (M.P.) INDIA
(Affiliated to Jiwaji University, Gwalior under 2(f) & 12(b) NAAC – 'A' Grade Accredited Institute)
www.krgcgwalior.org krgc@rediffmail.com Phone: 0751- 2625495, 0751-2438173

Food and Mask distribution in Birla Nagar Slum Areas	IQAC	Sevarth	2020-21	21
Online International Yoga Awareness by NCC Cadets	NCC	Sarve Santu Niramaya	2020-21	49
Plantation in AJAKS OFFICE, Thatipur, Gwalior by Dr. Madhu Laxmi Sharma			2020-21	
Voulantery teaching by the Faculty of Mathematics Aarti Yadav in Sevarth Pathshala at Vivekanand Needam		Sevarth	2020-21	62
Voulantery teaching by the student Sana Khan BA I in Sevarth Pathshala at Naka Chandrabadni		Sevarth	2020-21	59
Plantation in Ajaks thatipur Gwalior			2020-21	10



Plantation Program

S.No.	Session	Inside College campus	Outside College campus
1	2020-2021	150	126

Social Welfare Activities

- 21/7/2020 COVID-19 Awareness Program on You Tube platform
- 11/09/2021 Legal Awareness Program
- 5/11/2020 Environment Awareness activity was conducted inside and outside campus
- 31/01/2021 Polio Awareness Campaign in collaboration with Anganwadi at Nai Sadak Gwalior
- 22/03/2021 Slogan Writings on water conservation day
- 10/02/2021 Plantation Activity Program at Nehru Park in front of college campus

NCC

S.N	Name of Event	District Level	State Level	University Level	National Level
1.	Ajmer Track	—	—	—	—
2.	Sikkim Track	—	—	—	—

NSS

S.No.	Name of Event	District Level	State Level	University Level	National Level
1	Mask Distribution	—	-	—	-



कार्यालय प्राचार्य, शासकीय कमलाराजा कन्या स्नातकोत्तर स्वशासी महाविद्यालय, ग्वालियर
GOVT. KAMLA RAJA GIRLS P.G. AUTO. COLLEGE, GWALIOR (M.P.) INDIA
(Affiliated to Jiwaji University, Gwalior under 2(f) & 12(b) NAAC – 'A' Grade Accredited Institute)
www.krgcgwalior.org krgc@rediffmail.com Phone: 0751- 2625495, 0751-2438173

2	Writing Slogans on the Wall	-	-	-	-
3	Make circle outside the shop- Corona	-	-	-	-
4	Street play on corona	-	-	-	-
5	Feed Water Program	-	State Level	-	-
6	No Tobacco Day-Sugar Candy, Soft Distribution	—	State Level	—	-
7	World Environment Day - Plantation	—	State Level	—	-
8	World Child Labor Prohibition Day - Pledge	—	State Level	—	-
9	Slogan writing on covid day		State Level		-
10	Plantation, Sanitation		State Level	Jiwaji University	-
11	Cleanliness Program	College	-	-	-
12	Mask distribution, nutritious food distribution in Godgram Rairu	College	-	-	-
13	COVID oath	College	-	-	-
14	World Hand Washing Day	College	-	-	-
15	Constitution Day	College	-	-	-
16	World Aids Awareness Week	College	-	-	-
17	Slogan Writing Mask Distribution	College	-	-	-
18	Fitness dose, half an hour daily	College	-	-	-



कार्यालय प्राचार्य, शासकीय कमलाराजा कन्या स्नातकोत्तर स्वशासी महाविद्यालय, ग्वालियर
GOVT. KAMLA RAJA GIRLS P.G. AUTO. COLLEGE, GWALIOR (M.P.) INDIA
(Affiliated to Jiwaji University, Gwalior under 2(f) & 12(b) NAAC – 'A' Grade Accredited Institute)
www.krgcgwalior.org krgc@rediffmail.com Phone: 0751- 2625495, 0751-2438173

19	Cleanliness Program	College	-	-	-
20	Women Empowerment Program	College	-	-	-
21	Fitness dose, half an hour daily- Traditional Sports	College	-	-	-
22	Kite Competition	College	-	-	-
23	Awareness for women safety - essay, quiz	College	-	-	-
24	national song competition	College	-	-	-
25	ending	College	-	-	-
26	PPT Training - Career Cell+NSS	College	-	-	-
27	Martyr's Day - Pledge Rally	College	-	-	-
28	Participation in pulse polio campaign	College	-	-	-
29	No Plastic Use – Made the Paper Bags	College	-	-	-
30	Cleanliness Rally	College	-	-	-
31	Road Safety, Survival - Street Play	College	-	-	-
32	Women Empowerment Cell - Rangoli	College	-	-	-
33	Poster Making Competition	College	-	-	-
34	Essay	College	-	-	-
35	Debate Competition	College	-	-	-
36	Dance Competition	College	-	-	-
37	Samapan Day	College	-	-	-
38	Planting, Cleaning the Garden	College	-	-	-



39	Cycle Rally	College	-	-	-
40	L.N.I.P.E self-care program	College	-	-	-

Sports

Participation

S.No.	Name of Event	District Level	State Level	University Level	National Level
1	Kho-kho Competition	✓	-	-	-
2	Kabbadi Competition	✓	-	-	-
3	Basket ball Competition	✓	-	-	-
4	Athletics Competition	✓	-	-	-
5	Volley Ball Competition	✓	-	-	-
6	Chair Race Competition	✓	-	-	-
7	Three Leg Race	✓	-	-	-
8	Cricket Competition	✓	-	-	-
9	Lemon Race Competition	✓	-	-	-
10	Rassa Kashi Competition	✓	-	-	-
11	Bicycle Rally	✓	-	-	-
12	International Yoga Day	✓	-	-	-
13	One Month Karate Camp	✓	-	-	-



The Faculty members encouraged and assisted these students in many ways. They provided them with the facilities not only available in the College but from outside the College also such as arranging trainers/mentors for specialised activities. Arranged special lectures etc. on demand of students. The College also provided its skilled students with the financial support.

7. Research Activities (4 pages)

Identifies major research themes, places these themes in their social and economic context, highlights major research achievements (publications, collaborations, intellectual property produced, external funding received etc.), and profiles top researchers. Lays out the research agenda and identifies themes for the coming year.

Major research Themes

S. No.	Department	Prioritized research area and expertise	Social/ Economic Context
1	Home Science	Therapeutic/Clinical Nutrition Community Nutrition	Validation of therapeutic effect of natural foods in most prevalent non communicable diseases like diabetes and hyperlipidemia. To suggest cost effective therapies using natural foods in alleviation of these disorders
2	Home Science	Childeren and Adolescent Study	Study of various aspects



S. No.	Department	Prioritized research area and expertise	Social/ Economic Context
			ability growth and developmental aspects in various stages of lifecycle
3	Geography	Environmental Geography & Geography of Health	Holistic perspective of health encompassing society and space
4	Geography	Marketing Geography	Geomarketing research is the use of geographic parameters in marketing, helpful in research methodology, including sales and distributions
5	Political Science	Indian Political Thought, Indian Democracy, Political Theory, Gender Studies	To have a solid understanding for the system which govern the society and to understand the global political economy
6	History	History of different states and region	Awareness of Cultural Heritage
7	Music	Dhrupad, Khayal, Dance	To enhance the schools of music and to create



कार्यालय प्राचार्य, शासकीय कमलाराजा कन्या स्नातकोत्तर स्वशासी महाविद्यालय, ग्वालियर
GOVT. KAMLA RAJA GIRLS P.G. AUTO. COLLEGE, GWALIOR (M.P.) INDIA
(Affiliated to Jiwaji University, Gwalior under 2(f) & 12(b) NAAC – 'A' Grade Accredited Institute)
www.krgcgwalior.org krgc@rediffmail.com Phone: 0751- 2625495, 0751-2438173

S. No.	Department	Prioritized research area and expertise	Social/ Economic Context
8	Painting	Wall Paintings, Raagmala, Pandulipi	To develop the skill of particular school and to revive and transfer our heritage, art and culture
9	Hindi	Samkaleen Kavita, Hindi ka Vaishvikaran evam vibhinna sahityakaron ki rachanaye	Substantive finding of New trends of poetry
10	English	Classical Greek and Sanskrit studies Gender studies Post colonial studies Diasphoric literatures	Research ,to understand anthropological studies
12	Sanskrit	Hindu & Jain Darshan	to revive and transfer our heritage, literature and culture
13	Urdu	Qadeem Deccan Shayari	To add and enhance Urdu Adab
14	History	Gandhian Philosophy & Tourism	Worldwide solutions to the problems
15	Zoology	Wild Life, Aquatic Biology & Limnology	To study adverse effects of pollution on wild and aquatic life
16	Botany	Environmental, Issues, ethnobotanical	Conservation of



S. No.	Department	Prioritized research area and expertise	Social/ Economic Context
		studies of the area	biodiversity
16	Chemistry	Thermodynamics Properties Surfactants, Natural Product & Synthetic Organic Chemistry	Important role in pharmaceuticals/Medicinal , Food industry, cosmetic industry, paint industry
17	Biotechnology	Microbial and environmental biotechnology	helpful in medical sciences, Agriculture

Publication in National and International Journals/ Anthology

Publication in Journals

S.No	Name of the Faculty	Name of the Journal	Title of the paper	ISSN No
1.	Dr. Charanjeet Kaur	(IJARESM) International Journal of All research Education & Scientific Methods, Vol.:9, Issue:3	Awareness Study of Women Protection Law in Rural and Urban Household Women	2455-6211
2.	Dr. Swapna Marathe	Shodhayan	Ithihasik sandharva me Bhartiye sangeet	2249-7536



कार्यालय प्राचार्य, शासकीय कमलाराजा कन्या स्नातकोत्तर स्वशासी महाविद्यालय, ग्वालियर GOVT. KAMLA RAJA GIRLS P.G. AUTO. COLLEGE, GWALIOR (M.P.) INDIA

(Affiliated to Jiwaji University, Gwalior under 2(f) & 12(b) NAAC – 'A' Grade Accredited Institute)

www.krgcgwalior.org krgc@rediffmail.com Phone: 0751- 2625495, 0751-2438173

3.	Dr. Asha Singh Rawat	Jayanti (Refereed Annual Research Journal), Vol.-17	Natak kar bhavbhuti ki kratiyo mein varnit yagya ka mahatv	2248-9495
4.	Dr. Charu Katare	Indian Journal of Applied Research 10 (8), 50-54	A comparison of selected Anthropometric Parameters and Vital Signs in adolescent girls with reference to Hb status	2249-555X
5.	Dr. Mohit Arya	Research Journal of Agricultural Sciences Vol.12 (2): 531–534,	Effect of Phototactic Behavioural Response of Rhyzopertha dominica to Different Light Emitting Diodes (Leds).	P: 0976-1675 E: 2249-4538
6.	Dr. Purnima shah	Research Line (A Quarterly Multi Disciplinary International Research Journal) Vol.:42,	Kishoro ke tanav ka unki shaikshanik gudwatta par prabhav ka adhyayan	2321-2993
7.	Dr. Shailendra Singh Tomar	Shodh Sanchar Bulletin, Journal of Arts, Humanities and Social Sciences, Vol.-10, Issue-40	Bhind jile ke bhumi upyog pratirop ki vastusthiti evam sambhavnaye: Ek bhogolik adhyayan	2229-3620
8.	Dr. H.K. Agrawal	Printing area International Interdisciplinary	Evaluation of performance of balanced of mutual fund schemes on the basic of	2394-5303



		Research Journal in Marathi, Hindi & English Languages vol.:02, Issue: 70	sharpen model	
9.	Dr. P.k Bansal	Shodhayan International Quarterly Multi- Disciplinary UGC Approved Research Journal, Vol.:33, Year:10	Madhya Pradesh mein Mahila Police ki Pad sthiti ki Adhyayan	2249-7536
10.	Dr. Lata Mishra	Research Chronicler: International Multidisciplinary Refereed Peer Reviewed Indexed Research Journal, Vol.:9, Issue:2	Post Humanism in Contemporary World Fiction	ISSN Online: 2347-503X
11.	Dr. Asha Singh Rawat	Drashtikon Year:12 No. 6	Sanskrit ke Pramukh Purano mein Paryavaran Chetna	0975-119x
12.	Dr. Dinesh Patidar,	Unmilan, Year:35, No.:1	Nidarshan par- Burtrend Rasel	ISSN 0974-0053
13.	Dr. Meena Shrivatava	Ingit National Conference	Lok Chetna aur Tulsi ka Paudha	2454-6305
14.	Dr. Asha Singh Rawat		vaidik vadmey mein arthchintan	0975-119x



15.	Dr. Charu Chitra	International Journal of Research and analytical reviews Vol.8 Issue. 1 Jan 2021	An analysis of Select short stories of Shadat Hussain Manto dealing with Women suffering and humiliation: A study	E-ISSN: 2348-1269 P-ISSN: 2349-5138
16.	Dr. Charu Chitra	International Journal of Research and analytical reviews Vol.8 Issue. 1	Literature, Memory and the Trauma of Partition in the select works: A Study	E-ISSN: 2348-1269 P-ISSN: 2349-5138
17.	Dr. Charanjeet Kaur	Printing Area International Interdisciplinary Research Journal in Marathi, Hindi & English Languages, Vol.: 02, Issue:67	Ling ke Aadhar par madhumeh ke rogiyo ki rakt sharkara ke niyantran hetu paarijat ki chaal avam jado ke ark ke prabhav ka tulnatmak addhyan	2394-5303
18.	Dr. Krishna Jain	Sanskrit Ratnakar, Year:7 No.:03(75)	Krishna Awtar ka Vaishishtya	2395-3055
19.	Dr. Krishna Jain	Naatyam Raamji Upadhyay ka Natya sahitya,	Yashswini Kaikeyi	2229-5550
20.	Dr. Charanjeet Kaur	Vidhyawarta International Journal, Vol.:02, Issue:35	Mahila evam Purush madhumeh rogiyo ke lakshan avam unki bhojan sambandhi aadato ka tulnatmak adhhyan	2319-9318
21.	Dr. Shailja	International	A Comprehensive Study on	E-ISSN: 2348-



कार्यालय प्राचार्य, शासकीय कमलाराजा कन्या स्नातकोत्तर स्वशासी महाविद्यालय, ग्वालियर
GOVT. KAMLA RAJA GIRLS P.G. AUTO. COLLEGE, GWALIOR (M.P.) INDIA

(Affiliated to Jiwaji University, Gwalior under 2(f) & 12(b) NAAC – 'A' Grade Accredited Institute)

www.krgcgwalior.org krgc@rediffmail.com Phone: 0751- 2625495, 0751-2438173

	Jain	Journal of Research and Analytical Reviews Open Access Journal, Vol.:8, Issue:2	the level of job stress and dissatisfaction among executive (Working) women and female police constables	1269 P-ISSN: 2349-5138
22.	Dr. Shailja Jain	World Journal of Pharmacy and Pharmaceutical Sciences, Vol.:9, Issue:12	Impact of Fiber rich Diets on Glycaemic Index of Human Type-II Diabetes Mellitus (With Special Reference to Gwalior)	2278-4357
23.	Dr. H.K. Agrawal	Vidyawarta Peer Reviewed International Journal, Vol.:05, Issue: 35	A study on performance evaluation of balanced mutual fund	2319-9318
24.	Dr. Shailendra Singh	Shodh Sanchar bulletin	MP ki Vishesh Pichdi Janjaatiyon ki Koposhan samashyaye evam aahar anudaan Yojna ka Vishleshan	2229-3620
25.	Dr. Archana Kushwaha	Shabd Brahat	Mahatma Gandhi Rashtriya Rojgar Guarantee Adhiniyam ka Mahilao ki Samajik Aarthik Sthithi par Prabhav	2320-0871
26.	Dr. Archana Kushwah	International Journal of All Research education	Rashtriya Aajivika Mission	2455-6211



		and Scientific Methods		
27.	Dr. Archana Kushwah	Shikshan Sansodhan	Indira Aawas Yojna	2581-6241
28.	Dr. Sangeeta Somwanshi	Varul	alabhau sathe yancha kadambari tilstri	2249-0817
29.	Dr. Mohit Arya	Utter Pradesh Journal of Zoology. Vol. 41, 20 51-59,	Diversity of insect pest fauna and their economic status in different agricultural crop ecosystems of Badagaon area, Gwalior district of Madhya Pradesh.	0256-971X (P)
30.	Dr. Mohit Arya	International Journal of Multidisciplinary Educational Research Vol: 9, Issue: 10 (3), pp. 72-81	Studies on habitat and population status of Marsh Crocodile Crocodylus palustris and its conservation problem in the Jadhav Sagar Lake, Shivpuri, Madhya Pradesh, India.	2277-7881;
31.	Dr. Shailendra singh Tomar	Research Analysis and Evaluation	Bharat ki janjaati saksharta ke vikas kram ki sthiti ka vishleshanatmak adhhyayan	0975-3486
32.	Dr. Shailendra singh Tomar	Research Analysis and Evaluation	Bharat mein payjal samasya aur uska swashthya par prabhav (Janjatiyo ke vishesh sandarbh mein)	0975-3486



कार्यालय प्राचार्य, शासकीय कमलाराजा कन्या स्नातकोत्तर स्वशासी महाविद्यालय, ग्वालियर
GOVT. KAMLA RAJA GIRLS P.G. AUTO. COLLEGE, GWALIOR (M.P.) INDIA

(Affiliated to Jiwaji University, Gwalior under 2(f) & 12(b) NAAC – 'A' Grade Accredited Institute)

www.krgcgwalior.org krgc@rediffmail.com Phone: 0751- 2625495, 0751-2438173

33.	Dr. Jaya Jain	Research Journal of Bundelkhand Refereed Journal , Vol.:10	Chhatarpur Zile ke shailchitro ki prachinta	2395-2816
34.	Dr. Jaya Jain	Research Journal of Bundelkhand Refereed Journal , Vol.:11	Chhatarpur Zile ke shailchitro ki Rekha Chitra ka Rang evam saundaryatmak prachinta	2395-2817
35.	Dr. Abha Mishra	Lokmangal Patrika, Year-13, No. 52	Pustak - 'Ram par aakshep': Kitne anuchit kitne uचित kritika- Vijay Ranjan	2250-0448
36.	Dr. Archana Kushwah	International Journal of Humanities and Social Science Research, Vol.:7, Issue:1	Swarn jayanti gram rojgar yojna ka lalitpur janpad ki mahilaon ka arthik- samajik vikas: Ek adhyayan	2455-2070
37.	Dr. Shailendra Singh Tomar	Research Analysis and Evaluation	Sardar Sarovar pariyojna ka maanav jeewan evam paryavaran par prabhav	0975-3486
38.	Dr. Anita singh	Kala sarovar	when girls are educated, their countries more stronger and prosperus	0975-4520
39.	Dr. Charu Katore	Research Line International Journal 25-29 ,Vol. 1	Assessment of Anthropometric Parameters and Vital Signs in Adolescent Girls with reference to their	2321-2993



			Hemoglobin Status	
40.	Dr. Rashmi Chaudhary,	International Journal of Advances in Engineering and Management IJJAEM) Vol-2, Issue-1	A Mathematical model of Unemployment during covid-19 disease period	2395-5252
41.	Dr. A.K. Yadav, ,	International Journal of Advances in Engineering and Management IJJAEM) Vol-2, Issue-1	A Mathematical model of Unemployment during covid-19 disease period	2395-5252
42.	Dr. A.K. Yadav,	International Journal of Trend in Scientific Research and Development (IJTSRD) Vol-4, Issue-5	A Mathematical model for relationship and Spouse in COVID- 19 Lockdown period	2456-6470
43.	Dr. Rashmi Chaudhary	International Journal of Trend in Scientific Research and Development, Vol.4 issue 4,	Recent Trends of mathematics in Education	2456-6470
44.	Dr. Rashmi Chaudhary,	International Journal of Trend in	A Mathematical model for relationship and Spouse in	2456-6470



		Scientific Research and Development (IJTSRD) Vol-4, Issue-5	COVID- 19 Lockdown period	
45.	Dr. Rashmi Chaudhary	Iconic Research and Engineering Journal, Vol.4 Issue1	Mathematical model of lubrication mechanism of stepped bearing	2456-8880
46.	jagrti maitraya	Iconic Research and Engineering Journal, Vol.4 Issue1	Mathematical model of lubrication mechanism of stepped bearing	2456-8880
47.	Dr. S.S. Tomar	International Journal of Trend in Scientific Research and Development (IJTSRD) Vol-4, Issue-5	A Mathematical model for relationship and Spouse in COVID- 19 Lockdown period	2456-6470
48.	Dr. A.K. Yadav,	International Journal of Trend in Scientific Research and Development, Vol.4 issue 4,	Recent Trends of mathematics in Education	2456-6470
49.	Dr. A.K. Yadav	IRE Journal Vol.4 issue 21	A Mathematical Analysis Effect of Nutrition in Human Life.	2456-8880
50.	Dr. A.K. Yadav	Iconic Research and Engineering	Mathematical model of lubrication mechanism of	



		Journal, Vol.4 Issue1	stepped bearing	
51.	Dr. Rashmi Chaudhary	IRE Journal Vol.4 issue 21	A Mathematical Analysis Effect of Nutrition in Human Life.	2456-8880
52.	Dr. A.K. Yadav,	International Journal of Advances in Engineering and Management (IJAEM), Vol.2, Issue-1,	Mathematical model for utilization of forest resources	2395-5252
53.	Dr. Rashmi Chaudhary,	International Journal of Advances in Engineering and Management (IJAEM), Vol.2, Issue-1,	Mathematical model for utilization of forest resources	2395-5252
54.	Jagrati Maitrya	International Journal of Advances in Engineering and Management (IJAEM), Vol.2, Issue-1,	Mathematical model for utilization of forest resources	2395-5252



55.	Dr. Deepti jain	IEEE Transaction on Dielectrics And Electrical Insulation	Probing Local Charge Distribution of an Electret A case With a PVDF polymer	2.93
56.	Dr. Rajrani Sharma	Vidhyawarta	Giridhar kaviraay ki Vyavarik neeti	2319-9318
57.	Dr. Rajrani Sharma	Printing area international interdisciplenary Research Journal in Marathi, Hindi & English Languages	Giridhar kaviray ke kavya mein paarivarik niti	2394-5303
58.	shailendra singh tomar	harmanvati research journal of geography	bharat mein badhti jansankiya ke karan utpan janjatiye samashiya ka vishleshan	2277-9892
59.	Dr. N.K Nagaich		Madhya Pradesh ke adhyayan ashaskiy vidyalayon mein karyrat mahila shikshakon ke vyavsayik tanav ka adhyayan	2319-9318
60.	Dr. P.k Bansal	Shodhayan, Year- 10, No.-34	A Study of demographic Factors Affecting Work performance of Women police Special Reference to Madhya Pradesh	2249-7536
61.	Dr. Abha	Shodh Samagam	Hindi Sahitya main Viyang	2581-6918



कार्यालय प्राचार्य, शासकीय कमलाराजा कन्या स्नातकोत्तर स्वशासी महाविद्यालय, ग्वालियर
GOVT. KAMLA RAJA GIRLS P.G. AUTO. COLLEGE, GWALIOR (M.P.) INDIA
(Affiliated to Jiwaji University, Gwalior under 2(f) & 12(b) NAAC – 'A' Grade Accredited Institute)
www.krgcgwalior.org krgc@rediffmail.com Phone: 0751- 2625495, 0751-2438173

	Mishra		Drasthi	
62.	Madhu laxmi sharma	International journal for innovative research in multidisciplinary field	Biodiversity: Management and Conservation	2455-0620
63.	rashmi chaudhary	Ajanta	Dr.Bhimrao Ambedkar evam Stree Vimarsh	2277-5730
64.	Asha singh rawat	Vyasshree	Shrimad Bhagwat mahapurane Dharmik jeevan Darshanam	2320-2025
65.	Dr.Waseem Iftekhar Ansari	INTERNATIONAL QUARTERLY Refereed Reseach Value Journal Maunathbahanjan (U.P.)	Professor Muzaffar Hanfi Faiza-e-Adav	ISSN 2456-4001
66.	Dr. sukriti ghosh	Naveen Shodh Sansar	Leadership and women Empowerment A Conceptual Framework	2320-8767
67.	Dr. Shailendra Singh	International journal of trends in scientific research and development	A mathematical model for relationship of spouse in covid-19 lockdown period	2456-6470
68.	Dr. Anita Singh	Naveen Shodh Sansar	Leadership and women Empowerment A Conceptual Framework	2320-8767
69.	Dr. Chandana	Drishtikon	Bartman Parivesh Main E-	0975-119X



	Sharma		Governess Dwara Prasasnik Shudhar Avam Shushasn Per Prabhav	
--	--------	--	---	--

Books

Sr No.	Title with page numbers	Type of Authership	ISBN number	Author
1.	History of the Mahatma Gandhi, Satyagraha Movement In Bhagalpur Division of Bihar		978-93- 86955-74-6	Dr. Sharda Sharan
2.	MEER KE MUKHTALIF SALASIL AUR BUHANPUR			Dr. Shabana Nikhat Ansari
3.	Vyavsayik Sankhyiki Business Statistics		978-81- 927002-5-0	Dr. Suraj Bhan Prajapati

Chapters

S. No.	Title of the Book	Title of Chapter Edited	ISBN No.	Author
1.	Vaishvik Paryavaran Sankat (Samajik-Sahityik	Dr. Iccharam Dwivedi ki Kritiyo me Samajik Paryawaran chintan	978-81- 946502-9-4	Dr Asha Sing Rawat



	Chintan)			
2.	Chapter in Book (Chintan)	Sanskrit Patrakarita ke vividh Aayam	978-81- 951797-8-7	DrAsha Sing Rawat
3.	Surbharti vimarsh	Naishadhiyacharitasya kavya shastriyam samikshanam	978-93-87195- 99-8	Dr Asha Singh Rawat
4.	Sanskrit wadyamaya amitr	Adhunik Sanstrit sahitya main kaviy hatu vimarsh	978-81- 909947-5-0	Dr Asha Sing Rawat
5.	Sanskrit- Sahitya- Sadhna	Kavyeshu Natakasya Ramdiyata	978-93-87195- 97-4	Dr Asha Sing Rawat
6.	Postmethod Pedagogy and reflections in ELT	Surroundings: A major factor in learning English as A second Language	978-81- 931777-1-6	Dr. Beena Lad
7.	PAKHI	Aaj Imfal Fir band hein		DR. CHARU CHITRA
8.	Manju Kapur's Fictional World A Critical Spectrum	Slaughtering the Art of Adaptation: Manju's Custody to Ekta Kapoor's Yeh hai Mohabatein	978-93-87799- 45-5	Dr. Charu Chitra
9.	Be Vocal for local the way Ahead e- book	India's Covid-19 Stimulus Package:Self-Reliant India, A Critical Analysis	978-93-5416- 906-9	Dr. H.K. Agrawal
10.	COVID-19: The	Impact of COVID-19	978-1-	Dr. H.K.



	New Economics for Economies	on Indian Economy with Special Reference of Banking Sector	7438594-1-0-8	Agrawal
11.	Business & Trade Practices During and After Corona Pandemic	Indian Mutual Fund Industry Performance with Special Reference of Lock Down Period Due to Covid Havoc	978-93-88891-95-0	Dr. H.K. Agrawal
12.	Lockdown Impacts	Mental health in COVID-19 Pandemic: Psychological Perspective & Online Counseling	978-93-90781-03-4	Dr. Sonia Singh
13.	Shafaq ke aas-pas	Aawaj-E-zamir ki shayra	978-81-945817-2-7	Dr. Waseem Iftekhar Ansari

Participation in workshops/ Seminars/ conferences

(national/international)

International Conference	16
International Seminar	32
National Conference	50
National Seminar	85
State Workshop	17
State Seminar	6



Paper Presentation:

Sr No.	Name	Title of the paper presented	Title of Conference / Seminar	Organized by	Conference Level
01	Dr. Kumkum Mathur	Mystical expression of wash technique	Green challenges for sustainable development in modern ERA	BVM college Gwalior	National
02	Dr. Nisha Mishra	Possible solution to the shrinking and industry revival post covid-19	Socio- economic and environmental issues: challenges and Future prospects in current pandemic situation	Environment and society ICES 2020 grovel Environment & Social Association (GESA) New Delhi	International
03	Dr. Shailendra singh Tomar	Climate changes causes impact and remedial measures	Current environmental issues and sustainable development	Govt. KRG PG College gwalior	National
04	Dr. Shailendra singh Tomar	covid-19 ka bharat ke paryatan udhog per prabhav	Impact of covid-19 on tourism sector in india	Dr.H.S.Gour vishwavidyalaya Sagar MP	National



कार्यालय प्राचार्य, शासकीय कमलाराजा कन्या स्नातकोत्तर स्वशासी महाविद्यालय, ग्वालियर
GOVT. KAMLA RAJA GIRLS P.G. AUTO. COLLEGE, GWALIOR (M.P.) INDIA
 (Affiliated to Jiwaji University, Gwalior under 2(f) & 12(b) NAAC – 'A' Grade Accredited Institute)
www.krgcgwalior.org krgc@rediffmail.com Phone: 0751- 2625495, 0751-2438173

05	Dr. Shailendra singh Tomar	Impact of COVID – 19 pandemic on environment	Socio-economic and environmental issues: challenges and future prospects in current pandemic situation	ICES	International
06	Dr. Shailendra singh Tomar	Climate change and biodiversity : Impacts and solutions	Recent trends in global warming and climate change: It's impact on environment and biodiversity	Govt. KRG college Gwalior	International
07	Dr. Shailendra singh Tomar	Gwalior evam Chambal sambhag mein paryatan vikas ka jaiv vividhta par prabhav	Biodiversity and tourism	Govt. T.R.S. college ,Rewa	National
08	Dr. Abha Varshney	Climate change and global warming	Climate change and sustainability 2020	N.C. Autonomous college jajpur Odisha, India in asso. With ekiti state university nigeria	International



कार्यालय प्राचार्य, शासकीय कमलाराजा कन्या स्नातकोत्तर स्वशासी महाविद्यालय, ग्वालियर
GOVT. KAMLA RAJA GIRLS P.G. AUTO. COLLEGE, GWALIOR (M.P.) INDIA
(Affiliated to Jiwaji University, Gwalior under 2(f) & 12(b) NAAC – 'A' Grade Accredited Institute)
www.krgcgwalior.org krgc@rediffmail.com Phone: 0751- 2625495, 0751-2438173

09	Dr. Abha Varshney	Utility of flipped classroom in the present scenario: A critical review	Interdisciplinary development in science technology and humanities	Jaywanti haksar govt. PG College betul and chhindwara university	International
10	Dr. Abha Varshney	Impact of covid-19 on indian education	Environmental and society	Jointly organized GESA,NESA,ABRS,Govt. KRG PG College Gwalior	International
11	Dr. Abha Varshney	Climate change and biodiversity impact and solutions	Recent trends in global warming and climate change: It's impact on environment and biodiversity	Jointly org. SERI, KRG, International academy of Sc. and research kolkata Etc	International
12	Dr. Abha Varshney	Impact of fire crackers on ambient air quality with spec. ref. to greater gwalior	Multidisciplinary research conference	Govt .KRG PG college Gwalior	National
13	Dr. Abha Mishra	Hindi ka Vaishvik Roop	Hindi Mahotsav	Madhya Bhartiya Hindi Sahitya Sabha	National
14	Dr. Abha Mishra	Pt. Rudra Dutt Mishr ka Sahityik Avdaan	Writer and Translator Pt.	Madhya Bhartiya Itihaas Anusandhan	National



कार्यालय प्राचार्य, शासकीय कमलाराजा कन्या स्नातकोत्तर स्वशासी महाविद्यालय, ग्वालियर GOVT. KAMLA RAJA GIRLS P.G. AUTO. COLLEGE, GWALIOR (M.P.) INDIA

(Affiliated to Jiwaji University, Gwalior under 2(f) & 12(b) NAAC – 'A' Grade Accredited Institute)

www.krgcgwalior.org krgc@rediffmail.com Phone: 0751- 2625495, 0751-2438173

			Rudra Dutt Mishr	Pratishthaan	
15	Dr. Smita Sahasrabudhe	Importance of music during pandemic	Vartmaan Pariprekshya mein Mahamari ke Kaal mein samaaj ko Tanaav mukt Rakhne mein Maanav Jeewan mein Sangeet ki Bhumika	Oriental university Indore (M.P.)	National
16	Dr. Smita Sahasrabudhe	Raag des ka vivechan	Svar Jyoti	Sangeet Sadhna Rajouri Garden New Delhi	National
17	Dr. Smita Sahasrabudhe	Role of music for fitness	The Art of music for healing mind body & soul	Academy of physical education Nagpur	National
18	Dr. Dinesh Kumar Singh	Understanding State Polities In India : A case of Bihar	State Politics in India	Shaheed Bhagat Singh Evening Collage, University of Delhi	National
19	Dr. Dinesh Kumar Singh	Paryavaran ki Rajniti	Paryavaran Sahitya evam chetna	Govt. Kasturba Girls College Guna	National



कार्यालय प्राचार्य, शासकीय कमलाराजा कन्या स्नातकोत्तर स्वशासी महाविद्यालय, ग्वालियर
GOVT. KAMLA RAJA GIRLS P.G. AUTO. COLLEGE, GWALIOR (M.P.) INDIA
(Affiliated to Jiwaji University, Gwalior under 2(f) & 12(b) NAAC – 'A' Grade Accredited Institute)

www.krgcgwalior.org krgc@rediffmail.com Phone: 0751- 2625495, 0751-2438173

20	Dr. Dinesh Kumar Singh	<p>1.Caste, Class and gender in the Class-room- Examining bias in curriculum, Textbooks class room processes and research</p> <p>2. Role of education in creating a more and just society</p> <p>3.looking beyond Stereotypical generalizations learning respect and tolerance, importance of universal values- truth and righteous conduct peace and non- violence</p> <p>4.Anchoring professional ethics in universal values.</p>	Guru- Dakshita Faculty Induction programme (FIP) in (Online Mode). (09-02-2021 to 15-03-2021)	UGC Human Resource Development Centre LNIPE Gwalior	National
21	Dr Asha Sing Rawat	Uttar Ramcharitam evam Mahavir Charitam mein Vinyast Naatya Kaushal ki Tulna	Akhil Bhartiya Bhavbhuti Samaroh	Kaalidas Sanskrit Academy Ujjain	National



कार्यालय प्राचार्य, शासकीय कमलाराजा कन्या स्नातकोत्तर स्वशासी महाविद्यालय, ग्वालियर
GOVT. KAMLA RAJA GIRLS P.G. AUTO. COLLEGE, GWALIOR (M.P.) INDIA

(Affiliated to Jiwaji University, Gwalior under 2(f) & 12(b) NAAC – 'A' Grade Accredited Institute)

www.krgcgwalior.org krgc@rediffmail.com Phone: 0751- 2625495, 0751-2438173

22	Dr Asha Sing Rawat	Righveda mein Darshnik Chintan	Vidhya Vindatedmratam	Rajasthan Sanskrit Academy Jaipur	National
23	Dr Asha Sing Rawat	Pratap Vijayam Ek Samikshatmak Adhyayan	Sanskrit Sahitya evam Maharana Pratap	Mohanlal Sukhadiya Vishva Vidhyalaya Udaypur	National
24	Dr. Manju Dubey	Intellectual property rights	Intellectual property rights	KRGC Gwalior	National
25	Dr. Manju Dubey	Industry and academia collaboration	Industry and academia	KRGC Gwalior	National
26	Dr. Manju Dubey	Use of IT and ICT in library	Use of IT and ICT in library	KRGC Gwalior	National
27	Dr. Manju Dubey	A study on necessity and of online shopping during covid 19	National multidisciplinary research conference	KRGC, IBRF, CIU	National
28	Dr. Charu Katara	Impact of lockdown on family with special reference to working women	Socio-economic and Environmental Issues: Challenges and Future Prospects in Current Pandemic Situation		2 Internationa l Conference on Environmen t and Society (ICES 2020)



कार्यालय प्राचार्य, शासकीय कमलाराजा कन्या स्नातकोत्तर स्वशासी महाविद्यालय, ग्वालियर
GOVT. KAMLA RAJA GIRLS P.G. AUTO. COLLEGE, GWALIOR (M.P.) INDIA

(Affiliated to Jiwaji University, Gwalior under 2(f) & 12(b) NAAC – 'A' Grade Accredited Institute)

www.krgcgwalior.org krgc@rediffmail.com Phone: 0751- 2625495, 0751-2438173

29	Dr. Preeti Kulshrestha	Healing of earth and ecosystem up gradation during the Covid 19 Lockdown	2th International Conference on international and society ICES 2020	online	International
30	Dr. Preeti Kulshrestha	Use of medicinal Plants against Covid - 19 pandemic	National multidisciplinary research Conference	Govt K.R.G Collage	National
31	Dr. Deepak Pathak	New Challenge and opportunities in higher Education During pandemic	International Conference on Environment and society (ICES2020) Socio Economic and Environmental issues Challenges and future prospects in current pandemic situation	Govt. KRG PG College Gwalior	International
32	Dr. Deepak Pathak	Effect of climate Change on Food Security	International multidisciplinary Conference on Recent Trends in Global warming and climate change its impact on Environment and	Govt. KRG PG College Gwalior	International



			Biodiversity		
33	Dr. Deepak Pathak	Air pollution and its effect on human health in Gwalior	National Multidisciplinary research conference	Govt KRG PG College Gwalior	National
34	Dr. Sukriti Ghosh	Socio – Economic Issues.	Challenges	ICES	International
35	Dr. Sukriti Ghosh	Green Challenges	Women empowerment	BVM Collage	National
36	Dr. Sukriti Ghosh	Indo- China Relations	Indo- China Relations	GOVT Collage Sager	National
37	Dr. R.K Dubey	Covid-19 and immune System	Environment AND SOCIETY	Govt K R G pg (auto Collage M.P)	International



38	Dr. Ramesh Kumar Sharma	Introduction of M.P. Prison Rules, 1968 and Prisons Act, 1894	Conference and Training program for the officers of Land Records and Settlement	R.C.V.P. Naronha Academy of Administration and Management, Bhopal	State
----	-------------------------	---	---	---	-------

Institutes Where Students Visit For Research

1. Defense Research & Development Establishment, Gwalior
2. Internship of BALLB Student under Renowned lawyers
3. Defense Research & Development Establishment, Gwalior
4. Bundelkhand University
5. Allahabad University

Institutes Using College Laboratories:

- Cancer Hospital And Research Institute, Gwalior
- Govt. V.R.G. PG Girls College, Morar, Gwalior
- College Publications: Research Journal, Magazine, Newsletter

Publication of the International Peer Reviewed Multidisciplinary Triennial Journal by College Creative Discourse is in process

- Publication of the News Letter *Srijan* is in process
- Intellectual Property Produced: NIL
- External Funding Received: External Funding for research



is received by following agencies :

ICHR

UGC

- **Research Agenda & Identify themes in Coming Year:**
 - To integrate research with Community Extension Services so that awareness may be created on current Social and Health issues.

To combine community extension services with research in order to raise awareness of current social and health issues.

- To conduct basic researches that will provide basis for developing new knowledge and applied researches that will provide contextualise prevailing knowledge in the different academic fields.
- To conduct research that will provide data and information for administrative policy making in quality assurance.

8. Human Resources

Highlights senior faculty and administrative appointments. Describes what new areas of activity (new courses, research areas, extracurricular activities etc.) and administrative improvements are enabled by these appointments.

1. Faculty and Administrative appointments: Teaching and Non-teaching

Positions	Teaching Faculty			Non Teaching Faculty	Technical Staff
Sanctioned by UGC/ University/ State Govt	Prof	Assistant Prof	Guest Faculty	37	38
		89			



	22				
Filled	07	82	30	20	17

- Besides regular appointments Visiting Professors, Resource Persons and Administrative Officials contribute in various activities such as multidisciplinary Vocational and Skill based Short Term Certificate Courses governed by Ordinance (2016-17) designed and approved by Academic Council.
- Some sessions are also arranged by these faculties for self-employment and entrepreneurship trainings, activities undertaken as Institutional social responsibilities etc.
- To cater the needs of such a large strength extra teaching faculty members are required.
- To enhance the skills of students some new vocational short term certificate courses have been started. For them invited lectures have been arranged.
- Visiting Professors/Invited Guest Experts are invited to give specific and additional information according to syllabi.
- For Career Counselling, Placement Activities, Sports activities etc. Resource persons are invited for specialised purposes.
- To make students familiar with various research activities such as methodology, preparation of projects, funds arrangements etc. Experts are invited.
- Experts from Industry /Employment giving sector are invited time to time to guide the students.
- To help and assist in all these tasks nonteaching assistants / helpers are also appointed.

9. Events and Initiatives (5 pages)

Describes major events including seminars, conferences, competitions, student study trips etc. Focuses on what was achieved and learned, and how the college will follow up. Describes



significant academic, administrative, student support, fund raising, and other initiatives over the past year. The description of each initiative will be structured around the need for the initiative, how it was designed, what resources were used, what results were achieved, and which features of the initiative drove success.

The College continuously makes efforts to make its students competent and for it different departments of the College organize various activities. Results and Achievements give us feedback and we follow such events and initiatives in coming years. Some Events and Initiatives of the last year which are not included in other sections of this report are given here :

Description of Event and Title	Organizing Deptt.	Time Period From--To---	Objective	Achievement
Swaranjali kala Sadhak Program	Department of Music	1/7/20-31/6/21	Teaching classical music	589 Students were enlightened
Arambhika	Department of Law	1/7/20-31/6/21	Teaching classical music	1.2k followers
Contribution of KRGC in the Democratic Procedure of the Country in collaboration with District Election Office	NSS	03/11/2020	To create awareness in society	Students' knowledge was enriched. They participated in Group Discussion
Plantation in Madhav Nagar,		11/06/2021	Haritima -Harit Vasundhara	ISR Activity



Ram Mandir Chauraha, Shivaji Park in collaboration with ' Sakriy Samaj Seva'on				
Ritika Chaurasiya B.A.III ,Divya Mahor B.A. 1 ,Kusum Jatav B.Com III &Kashish Shakya B.Com II year Students organized Rangoli Competition to encourage the children of slum Area school run by Sevarth Jan Kalyan unit at Beti Bachao Churaha , Sikander Kampoo Area	NSS	22.4.21	IQAC ISR- Jagrirti 2020-21	Society oriented activity
Plantation at Chhatri Theme	NSS	14/2/2021		Enviironment protection act



Road				
Breast feeding day	Deptt. Of Home Science in the Collaboration with ICDS, Gwalior a wing of Women and Child Development Department	01-017 Aug 2020	To create awareness, importance of Breast Feeding among adolescent girls who are would be Mothers	Students were informed and knowledge received was reflected in Quiz
Bicycle Rally	Sports Department	17/3/21		Remembrance of martyrs of freedom fight
Faculty of the College & Lions Club distributed Masks to the Citizens of Gwalior under the 'Roko-Toko' Campaign	NCC	20-21	Faculty of the College & Lions Club distributed Masks to the Citizens of Gwalior	ISR-Jagriti

Autonomous body of the College provided financial assistance for various activities.



10. Institutional Development under RUSA and MPHEQIP

Describes the college's activities over the past year under both schemes, discusses performance against strategic/institutional development plans and commitments over the previous year, identifying successes and key constraints; discusses how the college's institutional performance indicators under MPHEQIP are linked to its plans and commitments and presents data on the performance indicators in the format below; and outlines the college's plans and commitments under these schemes for the current year.

Indicator*

Baseline Value

Target for [current Value as on 30th year] September [current year]

* Institutional performance indicators contained in the PIP and in the MOU for MPHEQIP signed between the college and the DHE

11. Placement Report (3 pages)

Describes the college's placement cell activities, placement rate and salary statistics, and lists major employers and sectors of employment (disaggregated by gender and course studied). Profiles successful alumni and identifies emerging placement trends.

Placement Cell:

Name of Student	Program graduated from	Company Name	Pay package at appointment
URVASHI SENGAR	MA (GEOGRAPHY)	Ministry of Personel, Public Grievance & Pensions Dept. of Personel & Training	-



कार्यालय प्राचार्य, शासकीय कमलाराजा कन्या स्नातकोत्तर स्वशासी महाविद्यालय, ग्वालियर
GOVT. KAMLA RAJA GIRLS P.G. AUTO. COLLEGE, GWALIOR (M.P.) INDIA
(Affiliated to Jiwaji University, Gwalior under 2(f) & 12(b) NAAC – 'A' Grade Accredited Institute)
www.krgcgwalior.org krgc@rediffmail.com Phone: 0751- 2625495, 0751-2438173

ELISHA SERENA	B.Sc	St. Thomas School, Civil Line Mainpuri (Assistant Teacher)	10,000/-
RESHU GUPTA	BA	GOVT. KRG PG (AUTO.) COLLEGE, GWALIOR - GUEST FACULTY(BIOTECHNOLOG Y)	14000/-
SEJAL SHARMA		Capjaminy	15000/-
KHUSHBOO KHAN	BCOM	Bank of India - Clerk	17,900/-
NEELAM YADAV	M.H.Sc.	Parivar Hospital	18500/-
SIMRAN GURNANI	BCOM	AVHM GLOBAL PVT. LTD.	192000/-
MUSKAN GUPTA		Myntra	20000/-
VANDANA JAGGI	M.H.Sc.	Food Safety and Standards Authority of India - General Manufacturing, Wholeseler, Retailer	SELF EMPLOYMEN T
GIRJESH SHARMA	M.H.Sc.	Madhya Pradesh Government Panchayat and Rural Development Department - Quality Monitor	
SUPRIYA AGRAWAL	Ph.D (Ongoing)	JBS GOVT. MATA JIJABAI COLLEGE, INODRE	
Gurpreet Kaur	BCOM	siddhi enterprises	12000



कार्यालय प्राचार्य, शासकीय कमलाराजा कन्या स्नातकोत्तर स्वशासी महाविद्यालय, ग्वालियर
GOVT. KAMLA RAJA GIRLS P.G. AUTO. COLLEGE, GWALIOR (M.P.) INDIA

(Affiliated to Jiwaji University, Gwalior under 2(f) & 12(b) NAAC – 'A' Grade Accredited Institute)

www.krgcgwalior.org krgc@rediffmail.com Phone: 0751- 2625495, 0751-2438173

ARCHANA MATHUR	BA	siddhi enterprises	12000
PINKI	BA	siddhi enterprises	10000
REENA	BA	siddhi enterprises	10000
VAISHALI NAMDEV	BA	siddhi enterprises	12000
SANDEEP KAUR	BA	siddhi enterprises	12000
Vallari Pawar	BSc bio	Indrani Sewa Samiti	6000
Anuja Chaturvedi	BA	Indrani Sewa Samiti	6000
Ragini Gupta	BCOM	Indrani Sewa Samiti	6000
Vanshika Rastogi	BACHELOR OF ARTS- Hindi lit., Pol.Science, Home Science	Indrani Sewa Samiti	6000
Jyoti Rawat	BACHELOR OF ARTS- ARTS Hindi Lit. Sociology History	Indrani Sewa Samiti	6000
Varsana	BCOM	Indrani Sewa Samiti	6000
DEEPA	BA	techie click innovations LLP.	8000
RONAK CHAUHAN	BA	techie click innovations LLP.	8000
SONAM YADAV	BA	techie click innovations LLP.	8000
SANDHYA SHARMA	BA	techie click innovations LLP.	8000



कार्यालय प्राचार्य, शासकीय कमलाराजा कन्या स्नातकोत्तर स्वशासी महाविद्यालय, ग्वालियर
GOVT. KAMLA RAJA GIRLS P.G. AUTO. COLLEGE, GWALIOR (M.P.) INDIA
 (Affiliated to Jiwaji University, Gwalior under 2(f) & 12(b) NAAC – 'A' Grade Accredited Institute)
www.krgcgwalior.org krgc@rediffmail.com Phone: 0751- 2625495, 0751-2438173

SAPNA KUSHWAH	BA	techie click innovations LLP.	8000
SAPNA RAJAK	BA	techie click innovations LLP.	8000
Kanishka Niranjan	C029 - B. B. A. (BBA)	Dr. Radharaman Swarnkar SHikchha Prasar Samiti	10,000
Kumud Jaisinghani	C029 - B. B. A. (BBA)	Dr. Radharaman Swarnkar SHikchha Prasar Samiti	10,000
Vishakha Sehgal	C029 - B. B. A. (BBA)	Dr. Radharaman Swarnkar SHikchha Prasar Samiti	10,000
Tanushka Kushwah	C029 - B. B. A. (BBA)	Dr. Radharaman Swarnkar SHikchha Prasar Samiti	10,000
Simran Sikarwar	C067 - B. Sc. (Biotechnology - Chemistry - Zoology)	Dr. Radharaman Swarnkar SHikchha Prasar Samiti	10,000
Arti Kulhadiya	C067 - B. Sc. (Biotechnology - Chemistry - Zoology)	Dr. Radharaman Swarnkar SHikchha Prasar Samiti	10,000
Archana	C067 - B. Sc. (Biotechnology - Chemistry - Zoology)	Dr. Radharaman Swarnkar SHikchha Prasar Samiti	10,000
Pawandeep Kaur	C067 - B. Sc. (Biotechnology - Chemistry - Zoology)	Dr. Radharaman Swarnkar SHikchha Prasar Samiti	10,000
Sneha Agrawal	C067 - B. Sc. (Biotechnology - Chemistry - Zoology)	Dr. Radharaman Swarnkar SHikchha Prasar Samiti	10,000
Nisha Gaud	B.Com-Plain	Dr. Radharaman Swarnkar	10,000



कार्यालय प्राचार्य, शासकीय कमलाराजा कन्या स्नातकोत्तर स्वशासी महाविद्यालय, ग्वालियर
GOVT. KAMLA RAJA GIRLS P.G. AUTO. COLLEGE, GWALIOR (M.P.) INDIA
(Affiliated to Jiwaji University, Gwalior under 2(f) & 12(b) NAAC – 'A' Grade Accredited Institute)
www.krgcgwalior.org krgc@rediffmail.com Phone: 0751- 2625495, 0751-2438173

		SHikchha Prasar Samiti	
AKANKSHA KUSHWAH	BA	Sainath Computers	10000/-
LOVELY RAJAK	BA	Sainath Computers	10000/-
LAXMI RAWAT	BA	Sainath Computers	10000/-
NEHA YADAV	BA	Sainath Computers	10000/-
ASHU KHARE	MA HISTORY	Abhinav Info Soft	8000
Nandita Gupta	BCOM	Abhinav Info Soft	8000
Archi Jain	BCOM	Abhinav Info Soft	8000
Jaya Madhwani	BCOM	Abhinav Info Soft	8000
Shaili Sankhala	BCOM	Abhinav Info Soft	8000
Richa Singh Sikarwar	BACHELOR OF ARTS- English Lit. , History , Geography	Abhinav Info Soft	8000
Babita Agrawal	BA	Swargiya Shri Lal ji Charitable Foundation	10000
Anushikha Kushwah	BCOM CS	Swargiya Shri Lal ji Charitable Foundation	10000
Neelam Rathor	BACHELOR OF ARTS- Hindi lit., Sociology, Dance	Swargiya Shri Lal ji Charitable Foundation	10000
PARUL	BALLB	Swargiya Shri Lal ji Charitable	10000



कार्यालय प्राचार्य, शासकीय कमलाराजा कन्या स्नातकोत्तर स्वशासी महाविद्यालय, ग्वालियर
GOVT. KAMLA RAJA GIRLS P.G. AUTO. COLLEGE, GWALIOR (M.P.) INDIA
 (Affiliated to Jiwaji University, Gwalior under 2(f) & 12(b) NAAC – 'A' Grade Accredited Institute)
www.krgcgwalior.org krgc@rediffmail.com Phone: 0751- 2625495, 0751-2438173

SAMBARWA R		Foundation	
Shubhangi Saxena	BCOM	Swargiya Shri Lal ji Charitable Foundation	10000
Somya Shukla	BCOM	Swargiya Shri Lal ji Charitable Foundation	10000
SEEMA MAGHAT	BA	SAI COMPUTER	10000/-
SWATI DHAKAD	BA	SAI COMPUTER	10000/-
Unnati Jain	BCOM	siddhi enterprises	10000
Kalindi Joglekar	BCOM	siddhi enterprises	10000
SHRADDHA LITHORIYA	BCOM	siddhi enterprises	12000
Mahima Gupta	BCOM	siddhi enterprises	12000
Vibha Gupta	BCOM	siddhi enterprises	10000
Mohini Jain	BCOM	siddhi enterprises	10000



Examination Cell:

EXAMINATIONS DATE				
Programme	Particulars		Dates	
			From	To
PG	Main Examination	I Sem	02-02-2021	--
		II Sem	29-06-2021	30-07-2021
		III Sem	02-02-2021	--
		IV Sem	29-06-2021	30-07-2021
	Supplementary Examination	I & III Sem	28-09-2021	10-04-2020
		II & IV Sem	06-04-2020	10-04-2020
UG	Main Examination	I yr	06-04-2021	23-07-2021
		II yr	01-04-2021	15-05-2021
		III Yr	22-03-2021	15-04-2021
		I , III, V, VII, IX Sem	16-01-2021	30-01-2021
		II, IV, VI, VIII, X Sem	10-05-2021	05-06-2021
	Supplementary Examination	I yr	06-04-2021	15-05-2021
		II yr	01-04-2021	15-05-2021
		III Yr	22-03-2021	15-04-2021

RESULT DATE				
Programme	Particulars		Dates	
			From	To
Programe	Main	I & III Sem	02-02-2021	12-02-2021



PG	Examination	II & IV Sem	29-06-2021	09-08-2021
	Supplementary Examination	I & III Sem	--	--
		II & IV Sem	--	--
UG	Main Examination	I yr	20/09/2021	21/10/2021
		II yr	21/08/2021	24/09/2021
		III Yr	16/07/2021	25/08/2021
		IV Yr	28/08/2021	-
		V Yr	28/07/2021	-

Students Greivance (Retotaling/ Revaluation)				
(For Preceding Session 2020-21)				
Program		No Of Students		%Change
UG		Applied	Change	
	I Yr	COVID - 19		
	II Yr			
	IIIIYr			
	IV Yr			
	V Yr			
PG	I& III Sem	COVID - 19		
	II &IVSem			



Result analysis

Result analysis was carried out and presented before the examination committee and principal for approval. Summary of the results during the session 2021-22 is as follows

Result analysis -PG

I SEM

Sr NO	SUB	Appeared	Passed	Pass %
	Urdu Lit.	11	11	100
	Eng. Lit	89	85	95.51
	Hindi Lit.	92	85	92.39
	Sanskrit Lit.	53	48	90.57
	Pol. Sc.	74	74	100
	Sociology	93	52	98.92
	History	91	84	92.31
	Economics	68	62	91.18
	Geography	52	44	84.62
	Philosophy	29	29	100
	Draw. & Pain.	19	16	84.21
	Music (Vocal)	11	11	100
	Music (Instrument)	01	01	100
	M.Com	506	492	97.23
	M.H.Sc (F & N)	19	19	100
	M.H.Sc (H & D)	07	07	100
	M.H.Sc (R & M)	-	-	-
	Mathematics	91	85	93.41



कार्यालय प्राचार्य, शासकीय कमलाराजा कन्या स्नातकोत्तर स्वशासी महाविद्यालय, ग्वालियर
GOVT. KAMLA RAJA GIRLS P.G. AUTO. COLLEGE, GWALIOR (M.P.) INDIA
 (Affiliated to Jiwaji University, Gwalior under 2(f) & 12(b) NAAC – 'A' Grade Accredited Institute)
www.krgcgwalior.org krgc@rediffmail.com Phone: 0751- 2625495, 0751-2438173

Physics	54	47	87.04
Chemistry	57	53	92.98
Botany	54	47	87.04
Zoology	62	59	95.16
Biotechnology	20	19	95.00

Result analysis -PG				
II SEM				
Sr NO	SUB	Appeared	Passed	Pass %
	Urdu Lit.	11	09	81.82
	Eng. Lit	87	83	95.40
	Hindi Lit.	85	81	95.29
	Sanskrit Lit.	49	44	89.80
	Pol. Sc.	74	70	84.59
	Sociology	92	88	95.65
	History	84	84	100.00
	Economics	62	59	95.16
	Geography	47	42	89.36
	Philosophy	01	01	100.00
	Draw. & Pain.	19	15	78.95
	Music (Vocal)	11	10	90.91
	Music (Instrument)	-	-	-
	M.Com	491	473	96.33
	M.H.Sc (F & N)	19	19	100.00
	M.H.Sc (H & D)	07	07	100.00
	M.H.Sc (R & M)	-	-	-



कार्यालय प्राचार्य, शासकीय कमलाराजा कन्या स्नातकोत्तर स्वशासी महाविद्यालय, ग्वालियर
GOVT. KAMLA RAJA GIRLS P.G. AUTO. COLLEGE, GWALIOR (M.P.) INDIA

(Affiliated to Jiwaji University, Gwalior under 2(f) & 12(b) NAAC – 'A' Grade Accredited Institute)

www.krgcgwalior.org krgc@rediffmail.com Phone: 0751- 2625495, 0751-2438173

	Mathematics	89	86	96.63
	Physics	49	48	97.96
	Chemistry	53	45	84.91
	Botany	47	45	95.74
	Zoology	60	58	96.67
	Biotechnology	19	18	94.74

Result analysis -PG

III SEM

Sr NO	SUB	Appeared	Passed	Pass %
	Urdu Lit.	14	14	100
	Eng. Lit	48	47	97.92
	Hindi Lit.	60	58	96.67
	Sanskrit Lit.	44	42	95.45
	Pol. Sc.	53	53	100
	Sociology	68	68	100
	History	60	56	93.33
	Economics	51	42	82.35
	Geography	40	40	100
	Philosophy	05	05	100
	Draw. & Pain.	08	08	100
	Music (Vocal)	09	09	100
	Music (Instrument)	05	05	100
	M.Com	482	482	100
	M.H.Sc (F & N)	10	10	100
	M.H.Sc (H & D)	-	-	-



कार्यालय प्राचार्य, शासकीय कमलाराजा कन्या स्नातकोत्तर स्वशासी महाविद्यालय, ग्वालियर
GOVT. KAMLA RAJA GIRLS P.G. AUTO. COLLEGE, GWALIOR (M.P.) INDIA

(Affiliated to Jiwaji University, Gwalior under 2(f) & 12(b) NAAC – 'A' Grade Accredited Institute)

www.krgcgwalior.org krgc@rediffmail.com Phone: 0751- 2625495, 0751-2438173

	M.H.Sc (R & M)	01	01	100
	Mathematics	54	51	94.44
	Physics	28	28	100
	Chemistry	19	19	100
	Botany	38	36	94.74
	Zoology	16	16	100
	Biotechnology	19	19	100

Result analysis -PG

IV SEM

Sr NO	SUB	Appeared	Passed	Pass %
	Urdu Lit.	14	12	85.71
	Eng. Lit	48	46	95.83
	Hindi Lit.	60	56	93.33
	Sanskrit Lit.	44	37	84.09
	Pol. Sc.	53	48	90.57
	Sociology	68	57	83.82
	History	60	49	81.67
	Economics	51	38	74.51
	Geography	40	40	100.00
	Philosophy	05	05	100.00
	Draw. & Pain.	08	08	100.00
	Music (Vocal)	-	-	-
	Music (Instrument)	09	08	88.89
	M.Com	482	443	91.91
	M.H.Sc (F & N)	10	08	80.00



M.H.Sc (H & D)	-	-	-
M.H.Sc (R & M)	01	01	100.00
Mathematics	54	51	94.44
Physics	28	28	100.00
Chemistry	19	19	100.00
Botany	36	35	97.22
Zoology	16	15	93.75
Biotechnology	19	19	100.00

Result analysis -UG

I YEAR				
Sr NO	SUB	Appered	Passed	Pass %
	BA	1454	1427	98.14
	BSc(Bio)	267	263	98.50
	BSc(Math)	280	277	98.93
	B.COM	904	893	98.78
	B. H. Sc.	12	12	100

Result analysis -UG

II YEAR				
Sr NO	SUB	Appered	Passed	Pass %
	BA	1378	1319	96.33
	BSc(Bio)	367	345	94.01
	BSc(Math)	343	334	97.38
	B.COM	1036	998	96.33
	B. H. Sc.	23	22	95.65



Result analysis -UG				
III YEAR				
Sr NO	SUB	Appered	Passed	Pass %
	BA	1139	1108	97.28
	BSc(Bio)	272	267	98.16
	BSc(Math)	342	334	97.66
	B.COM	1150	1082	94.09
	B. H. Sc.	12	12	100

Result analysis -UG				
I SEM				
Sr NO	SUB	Appered	Passed	Pass %
	B.C.A	24	22	91.67
	B.B.A.	54	52	96.30
	B.A. LLB	62	59	95.16

Result analysis -UG				
II SEM				
Sr NO	SUB	Appered	Passed	Pass %
	B.C.A	24	21	87.50
	B.B.A.	51	50	98.04
	B.A. LLB	60	59	98.33



Result analysis -UG

III SEM

Sr NO	SUB	Appered	Passed	Pass %
	B.C.A	14	14	100
	B.B.A.	12	12	100
	B.A. LLB	52	51	98.08

Result analysis -UG

IV SEM

Sr NO	SUB	Appered	Passed	Pass %
	B.C.A	14	14	100
	B.B.A.	12	12	100
	B.A. LLB	50	50	100

Result analysis -UG

V SEM

Sr NO	SUB	Appered	Passed	Pass %
	B.C.A	21	21	100
	B.B.A.	52	52	100
	B.A. LLB	53	51	96.23

Result analysis -UG

VI SEM

Sr NO	SUB	Appered	Passed	Pass %
	B.C.A	21	21	100
	B.B.A.	52	50	96.15



	B.A. LLB	51	51	100
--	----------	----	----	-----

Result analysis -UG

VII SEM

Sr NO	SUB	Appered	Passed	Pass %
	B.A. LLB	24	24	100

Result analysis -UG

VIII SEM

Sr NO	SUB	Appered	Passed	Pass %
	B.A. LLB	24	24	100

Result analysis -UG

IX SEM

Sr NO	SUB	Appered	Passed	Pass %
	B.A. LLB	30	30	100

Result analysis -UG

X SEM

Sr NO	SUB	Appered	Passed	Pass %
	B.A. LLB	30	30	100



Looking Ahead

Lays out the college's priorities and goals over the coming year. Describes key initiatives planned, what each initiative is expected to achieve, and how it will contribute to the college's long term development.

S. No	Head (administrative/ academic, etc)	Nature of proposal	Expected Outcome
1.	Academic	Start of Certificate Courses from the Pool	Vocational Skill Enhanced
2.	Academic	Conduction of Orientation Courses/ Faculty Development Program/ Training Programs/ Field Visit/ Survey etc.	Upgradation of Faculty
3.	Academic	Conduction of Internship, Project Works, Hands on Training Programs in Collaboration	Promotion to Collaboration
4.	Academic	Establish Dept. of Botany and Mathematics, as Research Centre	Promotion to Research
5.	Academic	Establishing Central Instrumental facility centre	Promotion to Research
6.	Academic	Publication of multidisciplinary Research Journal	Promotion to Acknowledgement and Acceptance of



			Research Work
7.	Academic	Incentives to quality and need based Research & Publication	Promotion to Research
8.	Academic	Promotion to Innovations, Patent and Consultancy	Spread of Research Outcomes Globally
9.	Academic	Online Question Bank	Pattern and Trend of Questions familiar
10.	Academic	Development of Medicinal Herbal Garden	Promotion to Subject and Understanding
11.	Infrastructure	Establishment of Language Lab fully equipped	Learning with modern facilities
12.	Infrastructure	Smart library and Audio-Video system for library fully equipped	Learning with modern facilities
13.	Infrastructure	Virtual, Multimedia and Smart Class Rooms	Learning with modern facilities
14.	Infrastructure	Upgradation of Academic Cell	Strengthen academic back bone
15.	Infrastructure	Development of Placement Cell	Placement Activities



कार्यालय प्राचार्य, शासकीय कमलाराजा कन्या स्नातकोत्तर स्वशासी महाविद्यालय, ग्वालियर
GOVT. KAMLA RAJA GIRLS P.G. AUTO. COLLEGE, GWALIOR (M.P.) INDIA
(Affiliated to Jiwaji University, Gwalior under 2(f) & 12(b) NAAC – 'A' Grade Accredited Institute)
www.krgcgwalior.org krgc@rediffmail.com Phone: 0751- 2625495, 0751-2438173

			Increased
16.	Support System	Expansion of Reprographic facilities	Enhanced Facilities
17.	Support System	IP based surveillance system, Wi-Fi campus,	Enhanced Security in Campus
18.	Infrastructure	Extension of science block and Employment Cell	More space for increasing number of students
19.	Infrastructure	Renovation in Dept. Of Home Science	People can work more efficiently
20.	GER	Field survey in catchment area, Campaign College Chalo Abhiyan, Meeting with Stakeholders	Increased Enrolment
21.	GER	Online Publicity through College Website, Digital Advertisement, Social Media, electronic & print media	Increased Enrolment
22.	Career and Placement	Counselling and Guidance for Academic Counselling, Financial Management and Arrangements, Job oriented programs, personality Development, Women Entrepreneurs, etc.	Increase in Placement and future Entrepreneurs



कार्यालय प्राचार्य, शासकीय कमलाराजा कन्या स्नातकोत्तर स्वशासी महाविद्यालय, ग्वालियर **GOVT. KAMLA RAJA GIRLS P.G. AUTO. COLLEGE, GWALIOR (M.P.) INDIA**

(Affiliated to Jiwaji University, Gwalior under 2(f) & 12(b) NAAC – 'A' Grade Accredited Institute)

www.krgcgwalior.org krgc@rediffmail.com Phone: 0751- 2625495, 0751-2438173

23.	Career and Placement	Organization of Job oriented and skill based Programs such as Trainings, Workshops, Lectures, Visits, Internships etc.	Increase in Placement and future Entrepreneurs
24.	Career and Placement	Training and Coaching Classes for Competitive Exams, Marketing, Public Dealing, 'Earn while you Learn', Capacity Building Programs etc.	Increase in Placement and future Entrepreneurs
25.	Career and Placement	Linkages with Industries and Employment giving Sectors	More Opportunities for Employment
26.	Career and Placement	Organization of Placement Activities, Career Fair	More Opportunities for Employment
27.	Counselling and Guidance	Legal Counselling, Awareness Programs on Legal Rights, Self-defence, Skill training programs, Leadership training program for Women	Promotion to Women Independence
28.	I.C.T. savvy women	Knowledge & Research through ICT, Globalisation, Fashion and market value, Opportunities in higher education, health awareness	Future Competent women
29.	Equal Opportunity	Development of Equal Opportunity Cell, Short Term Courses for Equal Opportunity, Establishment of Book	Promotion to Deprived Categories



		bank for differently abled students, Launching mooc,	
30.	Equal Opportunity	Special Mentoring to SC/ST/OBC/Minority/ED/PhD, Nomination of Brand Ambassador for SC/ST/OBC/Minority/ED	Promotion to Weaker Section
31.	Facilities for Needy	E-library (Brail), E-notice board {Brail}, Reading software, Screen Magnification Software, Brail Display and Voice Recognitive Software, Wheel Chairs and other aids	Assistance in Walking Hand in Hand
32.	Resource Management and Clean, Green Campus	Echo-friendly campus, Echo-friendly new construction, Development of Cleanliness drive, Application of Environmental Impact Assessment	Living in Healthy Environment
33.	Human Resource Management	Academic and Financial Support from Alumni, Passed out Student Tracking Mechanism	Bonding with Seniors receiving their Support and Guidance
34.	Administrative (e-Skill Promotion)	ICT training for teaching and non-teaching staff, Development of website, Video conferencing/Tele conferencing setup, E-learning centre, Data based creation and maintenance,	Proceeding with Modern Techniques



कार्यालय प्राचार्य, शासकीय कमलाराजा कन्या स्नातकोत्तर स्वशासी महाविद्यालय, ग्वालियर
GOVT. KAMLA RAJA GIRLS P.G. AUTO. COLLEGE, GWALIOR (M.P.) INDIA

(Affiliated to Jiwaji University, Gwalior under 2(f) & 12(b) NAAC – 'A' Grade Accredited Institute)

www.krgcgwalior.org krgc@rediffmail.com Phone: 0751- 2625495, 0751-2438173

		M.I.S. Software for internal administration	
35.	Administrative	Training programs for officials, teachers and administrative staff, Personal record maintenance, Digitalization of Library, Annual Maintenance Contract	Better and Fast Out Put
36.	Services	Promotion to E-services to students, parents and staff, Online examination service, Student facilities (canteen, student help centre, sport infrastructure)	Better and Fast Services
37.	Contribution to Society	Establishment of Women Study Centre, Rural women empowerment, , Adoption of Village - Barai, Block – Panihar, Tehsil – Ghatigaon, Dist. – Gwalior under program 'DARPAN' for it's all round development in Education, Health Awareness, Malnutrition - Causes and Cures, Opportunities in Various Fields, Preserving their Culture	Sensitive and Responsible Girls towards Society and Help of at least one village



Ph.D Awarded:

Name of the college	
7. PhDs Awarded	
Number of PhDs awarded between 1 st July 2020 to 30 th June 2021	
Discipline Group	Number
Botany	0
Chemistry	1
Commerce	2
Drawing & Painting	1
Economics	1
English	7
Geography	0
Hindi	3
History	0
Home Science	6
Mathematics	0



कार्यालय प्राचार्य, शासकीय कमलाराजा कन्या स्नातकोत्तर स्वशासी महाविद्यालय, ग्वालियर
GOVT. KAMLA RAJA GIRLS P.G. AUTO. COLLEGE, GWALIOR (M.P.) INDIA

(Affiliated to Jiwaji University, Gwalior under 2(f) & 12(b) NAAC – 'A' Grade Accredited Institute)

www.krgcgwalior.org krgc@rediffmail.com Phone: 0751- 2625495, 0751-2438173

Music	2
Physics	0
Political Science	2
Psychology	3
Sanskrit	0
Sociology	4
Urdu	0
Zoology	0
All disciplines	32



8. Research and consultancy

Revenue generated through externally funded research and
consultancies over

01st July 2020 to 30th June 2021

Discipline Group	Number of active projects	Total Revenue Generated (Rs. lakhs)
History	1	30,000
History	1	50,000

(a) Hostel occupancy as on 1st July 2020 to 30th June 2021

Capacity : 172		Number of residents
Males: Nil		
Females:		
SC	Male	Nil
	Female	00
ST	Male	Nil



कार्यालय प्राचार्य, शासकीय कमलाराजा कन्या स्नातकोत्तर स्वशासी महाविद्यालय, ग्वालियर
GOVT. KAMLA RAJA GIRLS P.G. AUTO. COLLEGE, GWALIOR (M.P.) INDIA
(Affiliated to Jiwaji University, Gwalior under 2(f) & 12(b) NAAC – 'A' Grade Accredited Institute)
www.krgcgwalior.org krgc@rediffmail.com Phone: 0751- 2625495, 0751-2438173

	Female	00
General	Male	Nil
	Female	00
Total	Male	Nil
	Female	00

(a) Hostel occupancy as on 1st July 2020 to 30th June 2021

(girls only hostels opened after _____)

<u>Capacity</u>	Number of residents
SC	00
ST	00
General	00
Total	00



Paper Published in Journals:

Number of papers published in peer-reviewed journals between 1 st July 2020 to 31 st June 2021			
Discipline Group	Number of papers published		Number of published papers through cross-institute research collaboration
	International Journals	National Journals	
Botany	01	01	
Zoology	01	02	
Chemistry	00	00	
Physics	00	01	
Mathematics	07	01	
Computer Science	00	00	
Biotechnology	00	00	
Home Science	05	03	



कार्यालय प्राचार्य, शासकीय कमलाराजा कन्या स्नातकोत्तर स्वशासी महाविद्यालय, ग्वालियर
GOVT. KAMLA RAJA GIRLS P.G. AUTO. COLLEGE, GWALIOR (M.P.) INDIA
(Affiliated to Jiwaji University, Gwalior under 2(f) & 12(b) NAAC – 'A' Grade Accredited Institute)

www.krgcgwalior.org krgc@rediffmail.com Phone: 0751- 2625495, 0751-2438173

Commerce	03	01	
Hindi	01	03	
English	03	00	
Urdu	01	00	
Sanskrit	00	06	
Marathi	00	01	
Philosophy	00	01	
Psychology	00	01	
History	00	01	
Sociology	02	02	
Political Sc.	00	01	
Economics	00	00	
Geography	06	08	
Music	00	01	
Draw. & Paint.	00	02	
Law	00	03	
All disciplines	30	39	