



कार्यालय प्राचार्य, शासकीय कमलाराजा कन्या स्नातकोत्तर स्वशासी महाविद्यालय, ग्वालियर
GOVT. KAMLA RAJA GIRLS P.G. AUTO. COLLEGE, GWALIOR (M.P.) INDIA
(Affiliated to Jiwaji University, Gwalior under 2(f) & 12(b) NAAC – 'A' Grade Accredited Institute)
www.krgcgwalior.org krgc@rediffmail.com Phone: 0751- 2625495, 0751-2438173

Annual Report of 2017-18



Table of Contents

| | |
|---|-----|
| Principal's Report..... | 3 |
| Overview | 7 |
| Courses Offered | 9 |
| Scholars registered in Research Centers | 16 |
| Areas of focus | 17 |
| Admission of UG and PG Students | 19 |
| Facilities and Services available in Central Library..... | 25 |
| Scholarships Schemes | 27 |
| Research Scholarship/ Award..... | 29 |
| Cultural Activities..... | 30 |
| Awards and Achievements | 32 |
| Extension Activities..... | 33 |
| Plantation Program | 35 |
| Social Welfare Activities..... | 35 |
| Major research Themes..... | 40 |
| Publication in National and International Journals/ Anthology | 43 |
| Participation in workshops/ Seminars/ conferences (national/ international) | 68 |
| Human Resources | 120 |
| Placement Cell..... | 124 |
| Examination Cell..... | 127 |
| Ph.D Awarded | 139 |
| Paper Published in Journals: | 142 |



Annual Report 2017-2018

This format outlines the annual reports to be published by all colleges participating in the Madhya Pradesh Higher Education Quality Improvement Project on their websites, by October 31st of each year. Part I is intended as a guide and colleges are free to alter the contents and format as they see fit. Part II, the Appendix (Institutional Performance Data and Financial Reports), is mandatory and colleges are required to report all data as per the attached format and instructions.

Part I 1. The Principal's Report (2 pages)

Highlights the key activities, events, and successes of the past year and briefly describes major new initiatives to be undertaken over the next year.

Principal's Report

One of the biggest and oldest colleges for women in the division, Govt. KRG PG (Autonomous) College educates over 9738 students. We teach our pupils how to put in a lot of effort and succeed in every endeavour. We provide them the chance to discover their unique ability and expertise and provide them with the tools and support they need to advance. The college works together to maximise its limited resources for excellence.

Our academic and extracurricular activities reflect the traditions and culture that are unique to us as Indians. The challenge to standing up for ourselves and be distinguishable" is something we are always willing to accept. Through their achievements in academics, athletics, cultural events, and ISR, our students demonstrate their potential and skills. We worked hard to instill confidence and independence in our students so they can shine in all areas, and our hard work paid off.

We feel pride in announcing that we achieved 'A' Grade in NAAC visit in last inspection.

Our Major New Initiatives

Various key activities, events and successes of ours can be outlined as follows –



- At the beginning of the year, an orientation course was held to prepare students for college and facilitate admission.
 - Our girls received numerous academic Gold Medals.
 - Our students participated and received awards in National and International events in sports.
 - Our College is proud for its representation in Republic day Parade almost every year through its students.
 - Many of our NCC cadets were selected for several activities such as Youth Exchange Program, National Integration Camp, Army Camp, Rock Climbing Camp etc.
- Through the activities of various clubs, we protect the cultural and moral values of our students.

To improve our students' skills, we introduced 11 vocational short-term certificate programmes in the college.

- Placement Cell of our College has been successful in educating our students to become entrepreneurs and provide jobs for others.
- This cell organized numerous training programs and prepared students to 'Earn while you Learn' as well as to get placements in Industries, Banking sector etc.
- We have fifteen research centres in the College actively engaged in quality research.
- Members of our faculty regularly publish books, book chapters, and research papers in national and international journals.
- We are plan and organize conferences, seminars, workshops, and other events for both students and teaching staff as well as across departments, colleges, and states.
- Our faculty members are also a part of Conferences /Seminars /workshops etc. organized by other Institutions.
- Almost every year, many of our faculty members are honored by the National and International Awards.
- Faculty members are frequently invited as Subject Expert /Resource Person in Seminars /Conferences



- We run Cleanliness Drive in Collaboration with NCC and NSS in the College.
- Our college is practicing Paperless Correspondence in administrative and academic work with the view to conserve environment. Some of the notice boards are replaced by Electronic Notice Boards.
- Water Harvesting has been introduced in the Campus.
- The College has begun to use renewable energy sources through solar panels.
- Student Help Centre and Canteen has been renovated.
- In the form of research awards, faculty members achieve national and international recognition.

Our Major New Initiatives

1. The College has planned to start new short term vocational certificate courses in 2018-2019 in addition to those running in the previous year. For the wide choice of courses the College has prepared a pool of different certificate courses and will start those ones in which students are showing their keen interest.
2. The College is going to start a new coaching program 'UDAN' to help and guide our students to prepare for Competitive Examinations.
3. Existing facilities and infrastructure are not sufficient to satisfy increasing demands so the College is planning to increase and upgrade its existing facilities and infrastructure in the session 2018-2019. Three more smart class rooms, Virtual class rooms, Language Lab, Library equipped with Audio Video System and digitalized etc. will be established in this session.
4. As per demand of time Faculty members and officials are required to upgrade them. Therefore the College itself will conduct Faculty Development Program, Training Programs, Workshops etc. for teaching as well as nonteaching members in batches in 2018-2019. Members will also be encouraged to sharpen them joining such programs outside and the College may support them.



5. We wish to give exposure and equal weightage to our students so we are planning to nominate Brand Ambassadors in different categories in this session to serve and pay attention in a better way and to have our students' cooperation in various activities.
6. We shall provide Counselling and Guidance not only for academics but also to enrich their knowledge in various fields such as financial awareness, social and psychological security, legal rights, placement opportunities etc.
7. To make our students skilled and competent we have to run special programs /trainings /coaching regarding better and effective communication, net friendly, preparation for competitive examinations, basic knowledge for self-employment etc. Job oriented and skill based course like Food Processing, Small Scale Industries, Handicrafts, Rural Resource Management, Courses for Targeted groups etc. are to be started. To provide students placement opportunities, career fair and campus placement activities will be held. To enhance placement, linkages with Industries, Banks and employment giving agencies will be set up.
8. In 2018-2019 the College will again ensure the availability of support system such as wheel chairs, E- notice board (Brail) etc. to those who need it.
9. Every institution is recognized by its research work, publications, journals, patents etc. We already have fifteen of our departments recognized research centres and efforts will be made to establish three more departments i.e. Botany, Mathematics and Urdu as research centres in this session. To facilitate our researchers, a well-equipped multi-disciplinary Central Instrumentation Laboratory will be established in 2018-2019. We are already publishing multi-disciplinary International Journal '*Creative Discourse*'. Incentives to quality and need based Research & Publication are to be granted for encouragement.
10. For socio economic growth of girls /women, a Women Study Centre is planned to be established where rural women empowerment, Counselling and Guidance for awareness programs on government schemes, psychological, social counselling, different trainings related to women empowerment etc. will be held. ICT based trainings will also be provided.



11. To maintain green and eco friendly campus activities like Environmental impact assessment, Environmental Audit will be done. Alumni association will be strengthen.
12. To develop the sense of responsibility towards society in our girls, to help people from nearby villages, program **DARPAN** will be launched in which village **Barai** near Gwalior will be adopted where Orientation /Training programs will be held for ICT awareness, financial schemes, rural development schemes, Causes and Cures of malnutrition in Children, empowering women with ICT etc.
13. For internal administration of the College installation of M.I.S. Software is in the process.
14. Some departments, science block, academic cell, placement cell etc. will be extended, medicinal herbal garden will be developed and sport infrastructure will also be extended. Renovation work will also be done in some departments
15. A separate building for Law studies is in progress which will be completed in this year.

Overview

To start this Report, firstly focus on the **Overview** which consists of 1 page which includes its history and mission, courses offered, area of focus etc. To write brief **Overview** is to start from its History,

History

Kamla Raja Girls Govt post graduate college was founded in 1937, this College is a pioneering and contributing women's greater education institution in this part of the country. It was introduced to the post-graduate stage in 1970 and in 1995 it was given autonomous status. Standing in the heart of the town with magnificent grace; the college is situated in one of the historic Scindia dynasty palaces. It has an impressive historic primary building alternated with lush green lawns, tall trees and recently built blocks of different faculties. It is a unique college of old and new architecture and scenic natural beauty spread across a vast campus of 53714.60 sq. m.



In 2002, the **National Assessment & Accreditation Council of Bangalore (NAAC)** accredited this university as a level B among autonomous colleges. The UGC is considering the proposal for upgrading the institution as Deemed University. During NAAC's 2010 reaccreditation phase, college has again been accredited by grade B. In the third cycle of NAAC reaccreditation, college has been upgraded as A grade College in 2016.

The college offers a wide range of program choices ,in the faculty of Arts, Science, Commerce and Home Science, the undergraduate and postgraduate training offer in 26 and 23 topics respectively a range that is potentially the largest in the entire Madhya Pradesh. The faculty is well-qualified and experienced as educators out of 101 hold Ph.D. degree. Short term Different Subject Course. Home assignment, Surprise Test GD. The College makes a continuous internal assessment of its students through written tests, seminars and symposia under the Autonomous Examination Scheme, followed by the final examination.

Mission

To provide value education for academic enhancement of girls for sustainable society

- ☐ To translate our vision into action plans.
- ☐ We are committed to provide excellent educational infrastructure and academic ambience conducive for higher learning for girls.
- ☐ To promote all round development of girls through fostering knowledge and skill, making them aware of values of equality, social justice, secularism, patriotism, co-operation and peaceful coexistence to assimilate best traditions and culture and transforming young girls into multifaceted women and global citizen.
- ☐ Our mission is dynamic and its tasks are well defined which make the Institution characteristic not only in this region, state but all over the nation.
- ☐ According to our vision and mission, academic programs and activities are decided. First these are communicated to the stakeholders.



Courses Offered

| Stream | Course | Optional Subjects |
|--------|--------|---|
| Arts | B. A. | (Dance – Hindi – History) |
| | B. A. | (Dance – Hindi – Political Science) |
| | B. A. | (Drawing and Painting – Economics – English) |
| | B. A. | (Drawing and Painting – Economics – Hindi) |
| | B. A. | (Drawing and Painting – Economics – Home Science) |
| | B. A. | (Drawing and Painting – Economics – Psychology) |
| | B. A. | (Drawing and Painting – English – History) |
| | B. A. | (Drawing and Painting – English – Psychology) |
| | B. A. | (Drawing and Painting – Hindi – History) |
| | B. A. | (Drawing and Painting – Hindi – Sociology) |
| | B. A. | (Drawing and Painting – History – Psychology) |
| | B. A. | (Drawing and Painting – History – Sociology) |
| | B. A. | (Economics – English – Geography) |
| | B. A. | (Economics – English – Mathematics) |
| | B. A. | (Economics – English – Philosophy) |
| | B. A. | (Economics – English – Political Science) |
| | B. A. | (Economics – English – Psychology) |



| | |
|-------|--|
| B. A. | (Economics – English – Sociology) |
| B. A. | (Economics – Geography – Hindi) |
| B. A. | (Economics – Geography – History) |
| B. A. | (Economics – Geography – Psychology) |
| B. A. | (Economics – Geography – Sanskrit) |
| B. A. | (Economics – Geography – Sociology) |
| B. A. | (Economics – Hindi – Home Science) |
| B. A. | (Economics – Hindi – Music) |
| B. A. | (Economics – Hindi – Political Science) |
| B. A. | (Economics – Hindi – Psychology) |
| B. A. | (Economics – Hindi – Sociology) |
| B. A. | (Economics – Home Science – Political Science) |
| B. A. | (Economics – Music – Sociology) |
| B. A. | (Economics – Political Science – Psychology) |
| B. A. | (Economics – Political Science – Sociology) |
| B. A. | (English – Geography – History) |
| B. A. | (English – Geography – Philosophy) |
| B. A. | (English – Geography – Psychology) |



| | |
|-------|--|
| B. A. | (English – Geography – Sociology) |
| B. A. | (English – History – Home Science) |
| B. A. | (English – History – Political Science) |
| B. A. | (English – History – Psychology) |
| B. A. | (English – History – Sociology) |
| B. A. | (English – Home Science – Political Science) |
| B. A. | (English – Philosophy – Sociology) |
| B. A. | (Functional Hindi – History – Sociology) |
| B. A. | (Functional Hindi – History – Political Science) |
| B. A. | (Functional Hindi – Music – Sociology) |
| B. A. | (Functional Hindi – Political Science – Sociology) |
| B. A. | (Geography – Hindi – History) |
| B. A. | (Geography – Hindi – Home Science) |
| B. A. | (Geography – Hindi – Philosophy) |
| B. A. | (Geography – Hindi – Psychology) |
| B. A. | (Geography – Hindi – Sociology) |
| B. A. | (Geography – Philosophy – Sanskrit) |
| B. A. | (Geography – Sanskrit – Sociology) |



कार्यालय प्राचार्य, शासकीय कमलाराजा कन्या स्नातकोत्तर स्वशासी महाविद्यालय, ग्वालियर
GOVT. KAMLA RAJA GIRLS P.G. AUTO. COLLEGE, GWALIOR (M.P.) INDIA
(Affiliated to Jiwaji University, Gwalior under 2(f) & 12(b) NAAC – 'A' Grade Accredited Institute)
www.krgcgwalior.org krgc@rediffmail.com Phone: 0751- 2625495, 0751-2438173

| | |
|-------|--|
| B. A. | (Geography – Sociology – Urdu) |
| B. A. | (Hindi – Drawing and Painting – Psychology) |
| B. A. | (Hindi – History – Home Science) |
| B. A. | (Hindi – History – Mathematics) |
| B. A. | (Hindi – History – Political Science) |
| B. A. | (Hindi – History – Psychology) |
| B. A. | (Hindi – Home Science – Music) |
| B. A. | (Hindi – Home Science – Political Science) |
| B. A. | (Hindi – Music – Sociology) |
| B. A. | (Hindi – Philosophy – Political Science) |
| B. A. | (Hindi – Philosophy – Sociology) |
| B. A. | (Hindi – Political Science – Sociology) |
| B. A. | (Hindi – Sanskrit – Sociology) |
| B. A. | (History – English – Music) |
| B. A. | (History – Geography – Psychology) |
| B. A. | (History – Geography – Sanskrit) |
| B. A. | (History – Home Science – Geography) |
| B. A. | (HISTORY – HOME SCIENCE – POLITICAL SCIENCE) |



कार्यालय प्राचार्य, शासकीय कमलाराजा कन्या स्नातकोत्तर स्वशासी महाविद्यालय, ग्वालियर
GOVT. KAMLA RAJA GIRLS P.G. AUTO. COLLEGE, GWALIOR (M.P.) INDIA
(Affiliated to Jiwaji University, Gwalior under 2(f) & 12(b) NAAC – 'A' Grade Accredited Institute)
www.krgcgwalior.org krgc@rediffmail.com Phone: 0751- 2625495, 0751-2438173

| | |
|-------|--|
| B. A. | (History – Home Science – Sanskrit) |
| B. A. | (History – Home Science – Sociology) |
| B. A. | (History – Mathematics – Sociology) |
| B. A. | (History – Music – Psycholosy) |
| B. A. | (History – Music – Sociology) |
| B. A. | (History – Philosophy – Sociology) |
| B. A. | (History – Political Science – Psychology) |
| B. A. | (History – Political Science – Sanskrit) |
| B. A. | (History – Political Science – Sociology) |
| B. A. | (History – Political Science – Urdu) |
| B. A. | (History – Psychology – Sanskrit) |
| B. A. | (History – Psychology – Sociology) |
| B. A. | (History – Sanskrit – Sociology) |
| B. A. | (History – Sociology – Urdu) |
| B. A. | (History-Urdu- Psychology) |
| B. A. | (Music – Philosophy – Psycholosy) |
| B. A. | (Music – Political Science – Sociology) |
| B. A. | (Political Science – Psychology – Sociology) |



| | | |
|-------------------------|------------------------|--|
| | B. A. | (Political Science – Sanskrit – Sociology) |
| | B. A. | (Political Science – Sociology – Urdu) |
| Management | B. B. A. | BBA |
| Computer Science | B. C. A. | BCA |
| Commerce | B. Com | Commerce |
| | B. Com | Commerce with Computer Application |
| Home Science | B. Sc. In Home Science | Home Science |
| Science | B. Sc. | Biotechnology – Botany – Chemistry |
| | B. Sc. | Biotechnology – Chemistry – Zoology |
| | B. Sc. | Botany – Chemistry – Microbiology |
| | B. Sc. | Botany – Chemistry – Zoology |
| | B. Sc. | Chemistry – Industrial Chemistry – Mathematics |
| | B. Sc. | Chemistry – Industrial Chemistry – Zoology |
| | B. Sc. | Chemistry – Mathematics – Physics |
| | B. Sc. | Computer Science – Mathematics – Physics |
| | B. Sc. | Electronics – Mathematics – Physics |
| | B. Sc. | Chemistry – Microbiology – Zoology |
| | B. Sc. | Bioinformatics – Botany – Chemistry |



कार्यालय प्राचार्य, शासकीय कमलाराजा कन्या स्नातकोत्तर स्वशासी महाविद्यालय, ग्वालियर
GOVT. KAMLA RAJA GIRLS P.G. AUTO. COLLEGE, GWALIOR (M.P.) INDIA
(Affiliated to Jiwaji University, Gwalior under 2(f) & 12(b) NAAC – 'A' Grade Accredited Institute)
www.krgcgwalior.org krgc@rediffmail.com Phone: 0751- 2625495, 0751-2438173

| | | |
|---------------------------|-------------|--------------------------------------|
| | B. Sc. | Bioinformatics – Chemistry – Zoology |
| Legal Studies Arts | B.A. L.L.B. | Law with Arts |
| Arts | M. A. | Drawing & Painting |
| | M. A. | Economics |
| | M. A. | English |
| | M. A. | Geography |
| | M. A. | Hindi |
| | M. A. | History |
| | M. A. | Music Instrument |
| | M. A. | Music Vocal |
| | M. A. | Philosophy |
| | M. A. | Political Science |
| | M. A. | Sanskrit |
| | M. A. | Sociology |
| | M. A. | Urdu |
| Commerce | M. Com. | Commerce |
| Science | M. Sc. | Biotechnology |
| | M. Sc. | Botany |



| | | |
|-------------------------------|-----------------------------|----------------------------|
| | M. Sc. | Chemistry |
| | M. Sc. | Mathematics |
| | M. Sc. | Physics |
| | M. Sc. | Zoology |
| Home Science | M. Sc. (Home Science) | Food and Nutrition |
| | M. Sc. (Home Science) | Family Resource Management |
| | M. Sc. (Home Science) | Human Development |
| Special Course | Diploma Course | PGDCA |
| Short Term Certificate Course | 6 Months Certificate Course | Food Technology |

Scholars registered in Research Centers

| S.no. | Subject | No. of scholars registered |
|-------|--------------------|----------------------------|
| 1 | Commerce | 02 |
| 2 | Drawing & Painting | 01 |
| 3 | Economics | 02 |
| 4 | English | 07 |
| 5 | Hindi | 06 |



| | | |
|-------|-------------------|----|
| 6 | History | 02 |
| 7 | Home Science | 12 |
| 8 | Music | 04 |
| 9 | Philosophy | 01 |
| 10 | Political Science | 01 |
| 11 | Sanskrit | 07 |
| 12 | Sociology | 07 |
| Total | | 52 |

Areas of focus

Our Mission statement is based on sustainable development of our students, institution, society and thus the development of the nation. Our focus is on

Inclusion: Open, welcoming, supportive and committed to equity and diversity.

Excellence: Quality and excellence in teaching- learning, research ISR and everything we do.

Sustainability: We are dedicated to create sustainability in our environment, weather Academic, Cultural, Spiritual Financial or Social.

To Nurture : We are responsive to the needs of our stakeholders, we are committed to nurture the development of our staff, students; their Academic, Social, Physical, Emotional, Cultural and Spiritual and Moral wellbeing.

Good Citizenship: We take pride to make our students good citizens. We extend intellectual, critical and participatory skills to develop civility and constitutional duties in them.

3. Senior Management Team and Board of Governors

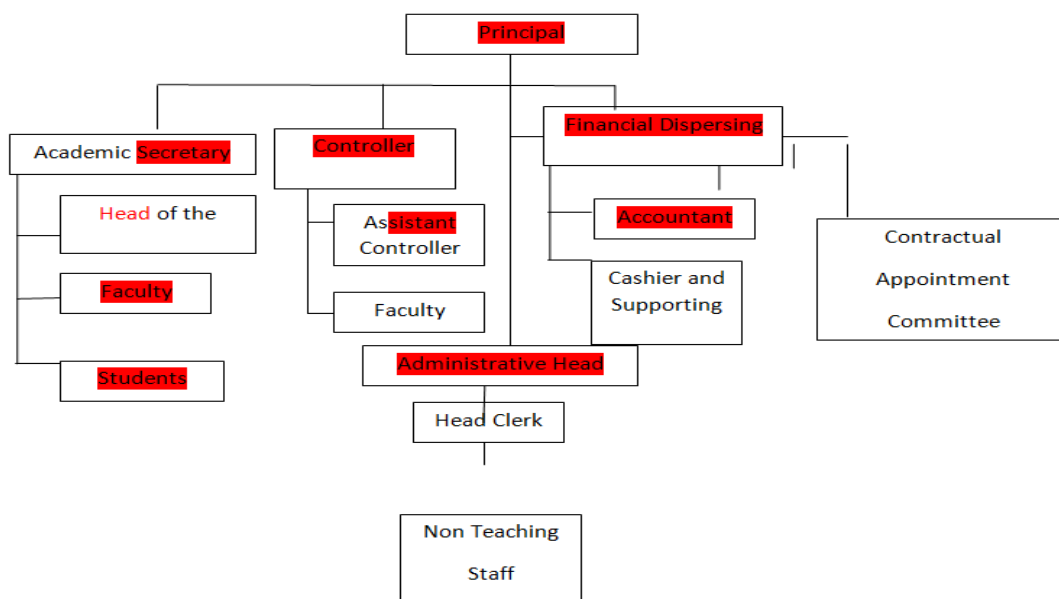


Lists the members of the senior management team (Principal, Registrar, Deans etc.) and members of the Board of Governors including their designations and professional backgrounds

Principal : **Dr.Prabha Mehta**

Academic Secretary : **Dr Sanjay Swarnkar**

Administrative Hierarchy



The number of applicants at the UG and PG level who ranked the college as their 1st, 2nd and 3rd preference, the number of applications received for PhD courses, and the number of students admitted at each level as per the following format. Applications UG, PG PhD

| Applications | UG | PG | PGDCA | PhD |
|---|------------------------------|----|-------|-----|
| Applications that ranked the college as the 1 st | Data available with deptt of | | | NA |



कार्यालय प्राचार्य, शासकीय कमलाराजा कन्या स्नातकोत्तर स्वशासी महाविद्यालय, ग्वालियर
GOVT. KAMLA RAJA GIRLS P.G. AUTO. COLLEGE, GWALIOR (M.P.) INDIA
(Affiliated to Jiwaji University, Gwalior under 2(f) & 12(b) NAAC – 'A' Grade Accredited Institute)
www.krgcgwalior.org krgc@rediffmail.com Phone: 0751- 2625495, 0751-2438173

| | | | | |
|--|-------------------|------------|-----------|--|
| preference | higher edu | | | |
| Applications that ranked the college as the 2 nd preference | - | | | |
| Applications that ranked the college as the 3 rd preference | - | | | |
| Total number of applications received | | | | |
| Number of students admitted | 2864 | 914 | 59 | |

Data Source: E-pravesh portal, records of the affiliating university •

Admission of UG and PG Students

A brief demographic profile of students admitted (in terms of gender, caste, whether from MP etc.)

| Gender | Name of the Course | Subject | Seats | Gen | OBC | SC | ST | Total | % of students from the State | % of students from other |
|--------|--------------------|---------|-------|-----|-----|----|----|-------|------------------------------|--------------------------|
| Female | | | | | | | | | | |



कार्यालय प्राचार्य, शासकीय कमलाराजा कन्या स्नातकोत्तर स्वशासी महाविद्यालय, ग्वालियर
GOVT. KAMLA RAJA GIRLS P.G. AUTO. COLLEGE, GWALIOR (M.P.) INDIA
(Affiliated to Jiwaji University, Gwalior under 2(f) & 12(b) NAAC – 'A' Grade Accredited Institute)
www.krgcgwalior.org krgc@rediffmail.com Phone: 0751- 2625495, 0751-2438173

| | | | | | | | | | | | r sta tes |
|--|-----|-------|--------------------------|----|----|----|----|----|----|-----|-----------------|
| | M.A | M.A. | Drawing & Painting | 37 | 06 | 01 | 0 | 0 | 07 | 100 | 0 |
| | | M.A. | Economi cs | 59 | 22 | 04 | 0 | 0 | 26 | 98 | 2 |
| | | M.A. | English | 70 | 42 | 05 | 0 | 0 | 47 | 99 | 1 |
| | | M. A. | Geograph y | 45 | 11 | 02 | 0 | 0 | 13 | 100 | 0 |
| | | M. A. | Hindi | 70 | 25 | 09 | 07 | 0 | 41 | 100 | 0 |
| | | M. A. | History | 69 | 21 | 13 | 06 | 0 | 40 | 99 | 1 |
| | | M. A. | Music Instrume nt | 18 | 0 | 0 | 0 | 0 | 0 | 100 | 0 |
| | | M. A. | Music Vocal | 19 | 06 | 03 | 01 | 0 | 10 | 100 | 0 |
| | | M. A. | Philosop hy | 25 | 05 | 02 | 01 | 0 | 08 | 100 | 0 |
| | | M. A. | Political Science | 56 | 25 | 12 | 01 | 01 | 39 | 98 | 2 |



कार्यालय प्राचार्य, शासकीय कमलाराजा कन्या स्नातकोत्तर स्वशासी महाविद्यालय, ग्वालियर
GOVT. KAMLA RAJA GIRLS P.G. AUTO. COLLEGE, GWALIOR (M.P.) INDIA
(Affiliated to Jiwaji University, Gwalior under 2(f) & 12(b) NAAC – 'A' Grade Accredited Institute)
www.krgcgwalior.org krgc@rediffmail.com Phone: 0751- 2625495, 0751-2438173

| | | | | | | | | | | |
|-----------|-------------------|-----------------------|-----|-----|----|----|----|-----|-----|---|
| | M. A. | Sanskrit | 46 | 19 | 07 | 0 | 0 | 26 | 98 | 2 |
| | M. A. | Sociolog y | 70 | 24 | 12 | 03 | 01 | 40 | 100 | 0 |
| | M. A. | Urdu | 30 | 08 | 07 | 0 | 0 | 15 | 100 | 0 |
| M.C om | M. Com. | Commerc e | 576 | 385 | 17 | 11 | 01 | 414 | 97 | 3 |
| M.S c. | M. Sc. | Biotechn ology | 35 | 08 | 0 | 0 | 0 | 08 | 99 | 1 |
| | M. Sc. | Botany | 58 | 20 | 08 | 02 | 0 | 30 | 100 | 0 |
| | M. Sc. | Chemistr y | 49 | 13 | 10 | 01 | 0 | 24 | 95 | 5 |
| | M. Sc. | Mathema tics | 70 | 27 | 11 | 1 | 0 | 39 | 95 | 5 |
| | M. Sc. | Physics | 48 | 28 | 03 | 05 | 0 | 36 | 98 | 2 |
| | M. Sc. | Zoology | 48 | 25 | 09 | 08 | 01 | 43 | 98 | 2 |
| | M. Sc. (HS) | Food and Nutrition | 15 | 04 | 02 | 0 | 0 | 06 | 100 | 0 |
| | M. | Family | 13 | 0 | 01 | 0 | 0 | 01 | 100 | 0 |



कार्यालय प्राचार्य, शासकीय कमलाराजा कन्या स्नातकोत्तर स्वशासी महाविद्यालय, ग्वालियर
GOVT. KAMLA RAJA GIRLS P.G. AUTO. COLLEGE, GWALIOR (M.P.) INDIA
(Affiliated to Jiwaji University, Gwalior under 2(f) & 12(b) NAAC – 'A' Grade Accredited Institute)
www.krgcgwalior.org krgc@rediffmail.com Phone: 0751- 2625495, 0751-2438173

| | | | | | | | | | | | |
|--------------|--|-------------------|----------------------------|----|-----|---|---|---|-----|---|---|
| | | Sc. (HS) | Resource Manage ment | | | | | | | | |
| | | M. Sc. (HS) | Human Develop ment | 10 | 01 | 0 | 0 | 0 | 01 | 0 | 0 |
| Total | | | | | 725 | | | | 914 | | |

PG Diploma

| | | | | | | | | | | | |
|--------------|--|-----------------------|-------|--|-----------|-----------|-----------|----------|-----------|--|--|
| | | PG Di plo ma | PGDCA | | 09 | 17 | 33 | 0 | 59 | | |
| Total | | | | | 09 | 17 | 33 | 0 | 59 | | |

UG

| | | | | | | | | | | | |
|--|--|-----------|------------------------|--|-----|-----|-----|----|------|--|--|
| | | B.A. | B.A. | | 203 | 385 | 229 | 08 | 825 | | |
| | | B.CO M | B.CO M | | 682 | 490 | 27 | 01 | 1200 | | |
| | | | B.CO M COM P. | | 22 | 20 | 11 | 0 | 53 | | |
| | | BBA | BBA | | 25 | 09 | 0 | 0 | 34 | | |



| | | | | | | | | | | | |
|--------------|--|-----------|------------------------------------|--|-------------|-------------|------------|-----------|-------------|--|--|
| | | BCA | BCA | | 23 | 13 | 06 | 0 | 42 | | |
| | | B.SC | B.SC (BIO) | | 128 | 128 | 27 | 02 | 285 | | |
| | | | B.SC (MAT HS) | | 107 | 81 | 31 | 0 | 219 | | |
| | | | B.SC (CO MP. SCIE NCE) | | 95 | 53 | 03 | 02 | 153 | | |
| | | | HOM E SCIE NCE | | 13 | 15 | 02 | 0 | 30 | | |
| | | BA LLB | BAL LB | | 12 | 08 | 03 | 0 | 23 | | |
| Total | | | | | 1310 | 1202 | 339 | 13 | 2864 | | |

The Student Experience

Briefly describes student life in the college, the facilities available to students (accommodation, meals, libraries, sporting facilities etc.), and student support services (financial aid, medical



facilities, counselling services, mentoring programs etc.). Highlights, in particular, major student welfare initiatives over the past year.

Infrastructural facilities available to students - Classrooms, Smart classrooms, laboratories and equipment, Hostel; Canteen; Garden; Students common room, Auditorium, Sports Complex & other facilities :

- **Class Room** - **133**
- **Smart Classrooms** - **27**
- **Laboratories** - **43**
- **Major Equipments-**
- **UV Spectrophotometer, Refrigerated Centrifuge,- Deep Freeze**

Atomic absorption spectrophotometer, Dehydrater, Automatic soxhlet Apparatus etc.

- **Common Research Lab** - **No**
- **Hostel** - **02**
- **Canteen** - **01**
- **Garden** - **05**
- **Students common room** - **01**
- **Auditorium** - **01**
- **Sports Complex** - **No**
- **Sports grounds** - **02**
- **Gym** - **available**
- **Library as a learning resource- advisory committee, its composition, facilities & services (e & print), annual improvement initiatives**



Facilities and Services available in Central Library

| | |
|---|---------------------|
| Total No. of Print Books | 1, 13421 |
| Print Journals | 51 |
| Fully Automated Library (SOUL Software) 2.0 | |
| E-Books | 80,000 |
| E-Journals | 2500 |
| News Papers | 14 |
| Magazines | 17 |
| Reprographic Machine | 01 |
| E-Library | 10 Computers |
| Online Resources | Inflibnet available |
| Book Bank Scheme | Available |

Student support services:

✓ IT enabled services

- All departments are Wi-Fi enabled.
- Online Fees Submission
- Online compilation and declaration of Results
- MIS implemented
- Online application and approval of Scholarships
- Digital display of necessary information and notices for students
- Help center with IT facility has been established in the college as student support Facility.
- Use of IT facilities for teaching
- e-learning resources available for teaching
- Inflibnet, Smart Class Rooms available



- ✓ Personal enhancement & development schemes- NCC, NSS, Facilities for physically challenged & slow learners; Tutor-Guardian Scheme, Grievance Redressal Cell, Entrepreneurship Cell, Remedial classes, Career Guidance Cell.
- ✓ Coaching for competitive exams(Udaan)

Personal enhancement & development schemes

- NSS : College NSS wing comprising of **323** volunteers
- NCC: A separate NCC office with a store room. College NCC wing comprising of **65** cadets.
- Earn while you learn: Stalls are organized so that students can earn money
- Camps are organized for legal awareness especially for women.
- Camps on POCSO are organized
- Grievance Redressal Cell: Grievance Redresses Cell deals with the grievances expressed by students and teachers.
- Facilities for physically challenged & slow learners: Equal Opportunity Cell has been established in the College to address the needs of the differently abled students. Samridhhi group has been designed to help slow learner in academics, in each section of all the classes.
- Tutor-Guardian Scheme: Tutor–Guardian Scheme exists in the College. Respective Cell organizes periodical meeting with parents and collect feedbacks. Suggestions and advices are receives
- Remedial Classes: Remedial classes are conducted regularly to meet the requirements of the students.
- Educational tours are organized for students to gain knowledge in field and to enhance their perceptive
- Extension lecture series in various disciplines is conducted to impart education by experts available in various streams



- Short term certificate courses are conducted in various subjects to provide value added education and enhance skill.
- Entrepreneurship Cell/Placement Cell: Placement Cell is functioning in the College. Periodically campus interviews and placement relevant activities are organized for the benefit of the students.

Other Facilities

- Career guidance cell organizes various carrier oriented training programs in different fields. It also provides platform to sharpen their skill to seek employment.
- Tutor-Guardian Scheme
- Grievance Redressal Cell
- Entrepreneurship Cell
- Remedial classes
- Camps and programs are organised for legal awareness by Law Department

Scholarships Schemes

- ✓ Financial assistance (scholarships/ schemes for SC/ST/OBC/ minority, Group & Health Insurance Schemes)
Various scholarship schemes are implemented for students' welfare and academic support by state and central Government:

Post Metric Scholarship Schemes (Benefits of only one scheme is allowed)

- मुख्यमंत्रीजनकल्याण (शिक्षाप्रोत्साहन) योजना
- Post Metric Scholarship Scheme [OBC Students]
- Post Metric Scholarship Scheme [SC Students]
- Post Metric Scholarship Scheme [ST Students]
- Mukhya Mantri Medhavi Vidhyarti (MMVY) Yojana (MMVY)



Awas Sahayata Schemes (Benefits of only one scheme is allowed)

- Awas Sahayta Yojana [SC Students]
- Awas Sahayta Yojana[ST Students]

Schemes of Higher Education Dept

- Gaon Ki Beti Yojna
- Pratibha Kiran Scholarship Yojna

Other Schemes

- Maharishi Valmiki Scheme
- I.T.I. General/OBC Students Scholarship Scheme
- Merit Scholarship Scheme
- P.E.T.C. Free Training Scheme

Scholarships sponsored by other agencies

- Central sector (by Central Government)
- Tech Mahindra
- Private and Public Sector Organizations

| S. No. | Schemes | No. of Students | Amount (In Rs.) |
|--------|--|-----------------|-----------------|
| 1. | Post Metric Scholarships for S.T. Students | 14 | 89142/- |
| 2. | Post Metric Scholarships for S.C. Students | 1074 | 7879294/- |



| | | | |
|-----|--|------|------------|
| 3. | Post Metric Scholarships for O.B.C. Students | 2544 | 10308063/- |
| 4. | Gaon ki Beti Yojna | 196 | 980000/- |
| 5. | Pratibha Kiran Yojna | 10 | 50,000/- |
| 6. | Central Sector | 208 | 3,870,000 |
| 7. | Minority Scholarships | 11 | 44000 |
| 8. | Handicap Scholarships | 2 | |
| 9. | Awaas Sahitya Yojna | 118 | 2724640/- |
| 10. | Mukhya Mantri Medhavi Yojna | 284 | |
| 11. | Book Bank Distribution | 846 | 110235 |

6. Student Achievements (5 page)

Highlights the most significant academic and non-academic achievements of students over the past year. This can include major academic awards and scholarships received student research, and sports and other extracurricular activities. Focusses, in particular, on profiling top achievers and describing how resources provided by the college helped these students succeed.

Research Scholarship/ Award

| S.No . | Name of the award/medal/ meritorious scholarship | Name of the Recipient | Class | Area of Achievement |
|--------|--|-----------------------|--------------|---------------------|
| 1. | UGC NET/ JRF | ANAMIKA DEVI | Ph.D Scholar | Sanskrit |



कार्यालय प्राचार्य, शासकीय कमलाराजा कन्या स्नातकोत्तर स्वशासी महाविद्यालय, ग्वालियर
GOVT. KAMLA RAJA GIRLS P.G. AUTO. COLLEGE, GWALIOR (M.P.) INDIA
 (Affiliated to Jiwaji University, Gwalior under 2(f) & 12(b) NAAC – 'A' Grade Accredited Institute)
www.krgcgwalior.org krgc@rediffmail.com Phone: 0751- 2625495, 0751-2438173

| | | | | |
|----|-----------------|----------------|--------------|---|
| 2. | RJNF | RANJANA SANJAY | Ph.D Scholar | Hindi |
| 3. | UGC NET/ JRF | NIDHI SACHAN | Ph.D Scholar | Home Science (Food and Nutrition) |
| 4. | UGC NET/ JRF | ARNIKA YADAV | Ph.D Scholar | Hindi |
| 5. | UGC NET/ JRF | SAPNA PATHAK | Ph.D Scholar | Hindi |
| 6. | UGC NET/ JRF | RENU SINGH | Ph.D Scholar | Hindi |
| 7. | UGC NET/JRF | SUMAN YADAV | Ph.D Scholar | Hindi |
| 8. | UGC NET/JRF | ANITA BANSAL | Ph.D Scholar | Hindi |

Cultural Activities

- Participation

| S.no | Name of the event | District Level | State Level | University | National Level |
|------|--------------------|----------------|-------------|------------|----------------|
| 1 | Debate Competition | | | | - |



| | | | | | |
|----|--|--|--|--|---|
| 2 | Card Making Competition | | | | - |
| 3 | Mehandi Competition | | | | - |
| 4 | Letter Writing Competition | | | | |
| 5 | Cultural Program by NSS | | | | |
| 6 | Essay Writing Competition | | | | |
| 7 | Hindi Bhashan Competition | | | | |
| 8 | Kite Decoration Competition | | | | |
| 9 | Shlok Path Competition for Bhavbhuti Samaroh | | | | - |
| 10 | Hindi Bhashan Competition | | | | |



Awards and Achievements

| Name of the student | Event | Award/Achievement |
|---------------------|---------------|-------------------------|
| Upasana Mishra | NSS | NSS National Award |
| Anamika Khare | Mime | 3rd Place in Yuva Utsav |
| Anamika Khare | One Act Play | 2nd Place in Yuva Utsav |
| Elisha Serena | National Camp | Debate Competition |

✓ **Major student welfare initiatives over the past year**

- Earn while you learn
- Equal Opportunity Cell
- Various scholarship Cell
- Grivence Redressal Cell
- Women Development Cell
- Different cells constituted for welfare of the students
- Udan
- Students Mentor



Extension Activities

| Name of the activity | Organising unit/ agency/ collaborating agency | Name of the scheme | Year of the activity | Number of students/teachers participated in such activities |
|--|---|--------------------------|----------------------|---|
| Human Chain by the Students for the unity of Country at Victoria Market | College | Integrity of the Country | 2017-18 | 107 |
| Abha Varshney, Faculty of Geography Department delivered lectures at the Padma School, Gwalior in the interactive awareness programme "Aao Mil Baache" | Academic Cell & Padma School | Aao Mil Banche | 2017-18 | 68 |
| Awareness Rally for Education at Mahalgaon | NSS | Sevarth | 2017-18 | 53 |
| NSS Voulanteers at Veerpur Dam -Deepening by Slit removal | NSS | Virasat | 2017-18 | 57 |



| | | | | |
|---|-------------------------|----------------------------|---------|-----|
| Weed Removal in Jiwaji University by the Voulanteers of NSS | NSS & Jiwaji University | HARITIMA- Harit Vasundhara | 2017-18 | 44 |
| Swachata Sarvekhsan Conducted by NSS Voulanteers in Collaboration with Nagar Nigam at Jiwaji University | NSS & Nagar Nigam | Shuchita | 2017-18 | 51 |
| Plantation by NSS Voulanteers at Collectorate Area | NSS | Haritima- Harit Vasundhara | 2017-18 | 29 |
| Clothes Distribution at Adopted Basti Mahadji Nagar by NSS Students | NSS | Sevarth | 2017-18 | 24 |
| Nukkad Natak on 'World Day Against Child Labour' at Mela Ground | NSS | ISR-Jagrati | 2017-18 | 39 |
| Yoga Awareness by the students of College at LNIPE | Sports Department | Sarve Santu Niramaya | 2017-18 | 122 |
| HIV AIDS Awareness from slogans by NSS Voulanteers at Mahalgaon Gwalior | NSS | Sarve Santu Niramaya | 2017-18 | 54 |



| | | | | |
|---|----------------------------|-------------------------|---------|-----|
| Dr. Charu Katore ,Faculty HomeScience, Organized Six Months'Free Diabetease Check up,Counselling Programme & Free Food for the Citizens of Gwalior where 150 people were benefitted | Home Science Department | Sarve Santu Niramaya | 2017-18 | 150 |
|---|----------------------------|-------------------------|---------|-----|

Plantation Program

| S.No. | Session | Inside College campus | Outside Collegecampus |
|-------|---------|-----------------------|-----------------------|
| 1 | 2017-18 | 118 | 150 |

Social Welfare Activities

- NSS ki chatra ne keral mai badh pilitou ke punarwas heitu 2765 rupee ki rashi ekstra ker mukhya mantri apda kosh mai jama kiye.
- 02/05/2019 Ojaswani vichar munch ke sehyog se matdata jagrukta wyakhyan tatha sat pratishat matdan heitu chatrao ko jagruk kiya gya.
- 31.05.2015 ko wishav tambaku nishedh divas per chatrao ko ghumarpan na karne aour na karne dene ki sapath dilai gai tatha chatrao ne dusparinam ko btaya.
- 04/06/2019 ko wishav pryawarn divas mahavidhyalaya pariser mai pracharya Dr. Manju dubey ke netratarav mai podharopan kiya gya sath hin brasharopan evem pryawaran sanrakchan ke liye rally nikali gai



- 16/07/2019 ko gurupurnima ke avsar per papal aour neem ke podhe lgaye gaye
- 20/07/2019 ko poudhe lgaker hariyali mahotasava manaya gya – Dherti ka sangar karyakarm ke antargat.
- 03/08/2019 ko sawachta pakhwade ka parambh kiya gya chatrao ne NSS kach evem karyakarm kach ki saaf safai ki.
- 24/08/2019 sambhavana jagrukta se sambhandit geeto ki pratiogita ka ayojan kiya gya sath hi Gandhi darshan per hamare prayas per nibhandh evem poster pratiogita ayogit ki gai
- 31/08/2019 ko Pri. R.D ki bethak evem chayan prakriya ki jankari evem jila panchayat karyalaya ki upayukt vikas chatrao ko swach bharat mission app ki jankari di tatha app download karna sikhaya aour feedback dene ka tarika samjhaya
- 05/09/2019 ko shishak divas evem poshan aahar per ek parichrcha ka ayojan kiya gya
- 14/09/2019 ko hindi dives ka ayojan diya gya karyakarm mai chatrao evem pradhyapako ne hindi ke mahetav evem vistar haitu apne vichar prastut kiye sath hi geet evem nitra ki madhur prastutiyo se karyakarm ko sampan kiya

NCC

| S.No | Name of Event | District level | State level | University Level | National level |
|------|-----------------|----------------|-------------|------------------|----------------|
| 1. | Himanchal Track | - | ✓ | - | - |



NSS

| S.No | Name of Event | District level | State level | University Level | National level |
|------|---|----------------|-------------|------------------|----------------|
| 1 | Seminar on cleanliness | | | | ✓ |
| 2 | Jiwaji University Cleanliness Rally | | ✓ | | |
| 3 | Tree plantation, rally against polythene | | | | |
| 4 | Sadbhavna Pakhwada National Song Competition Rally | | ✓ | | |
| 5 | River Awareness Program, Poetry Recitation | | ✓ | | |
| 6 | Cleanliness program on the fair ground with the help of Municipal Corporation | | | | |
| 7 | aids fortnight human chain, Seminar ,Essay Slogan, Poster ,Competition | | | | |
| 8 | Titan Eye Plus - Eye | | | | |



| | | | | | |
|----|---|--|--|--|--|
| | Test Camp | | | | |
| 9 | Participation in Pulse Polio Program | | | | |
| 10 | Kaivalyadham Bhopal - Yoga Camp | | | | |
| 11 | speech for blood donation awareness | | | | |
| 12 | Beti Bachao Beti Padhao Pakhwada - slogan, poster, essay, speech competition, survey in Gaur Basti, Kanya Pujan | | | | |
| 13 | Seven Day Residential Camp | | | | |
| 14 | Women day | | | | |
| 15 | Ra.se.yo. foundation day | | | | |
| 16 | Clothing donation in godhbasti | | | | |
| 17 | Cleanliness Awareness Rally from College to Govt. | | | | |



| | | | | | |
|----|---|--|--|--|--|
| | Kamlaraja Bal Chikitsalaya, Gwalior | | | | |
| 18 | Financial literacy program at Jiwaji University | | | | |

Sports

Participation

| S.No. | Name of Event | Inter College level | Div. level | District level | State level | University Level | National level |
|-------|---------------|---------------------------|---------------|-------------------|----------------|---------------------|-------------------|
| 1. | Yoga | ✓ | | - | | - | - |
| 2. | Basket Ball | ✓ | | - | - | - | |
| 3. | Chess | ✓ | | | | | |
| 4. | Cross Country | ✓ | | | | | |
| 5. | Swimming | ✓ | | | | | |
| 6. | Volly Ball | ✓ | | | | | |
| 7. | Cricket | ✓ | | | ✓ | | |
| 8. | kabaddi | ✓ | | | | | |
| 9. | Kho-Kho | ✓ | ✓ | | | | |



| | | | | | | | |
|-----|--------------|---|--|--|---|--|--|
| 10. | Hand Ball | ✓ | | | | | |
| 11. | Athletics | ✓ | | | | | |
| 12. | Volly Ball | | | | ✓ | | |
| 13. | Foot Ball | ✓ | | | | | |
| 14. | Hockey | ✓ | | | | | |
| 15. | Table Tennis | ✓ | | | | | |
| 16. | Soft Ball | ✓ | | | | | |

7. Research Activities (4 pages)

Identifies major research themes, places these themes in their social and economic context, highlights major research achievements (publications, collaborations, intellectual property produced, external funding received etc.), and profiles top researchers. Lays out the research agenda and identifies themes for the coming year.

Major research Themes

| S. No. | Department | Prioritized research area and expertise | Social/ Economic Context |
|--------|--------------|---|---|
| 1 | Home Science | Public Health and Nutrition Therapeutic/Clinical Nutrition | Validation of therapeutic effect of natural foods in most prevalent non communicable diseases |



| S. No. | Department | Prioritized research area and expertise | Social/ Economic Context |
|--------|-------------------|--|--|
| | | | like diabetes and hyperlipidemia.To suggest cost effective therapies using natural foods in alleviation of these disorders |
| 2 | Home Science | Adolescent Study | Development of identity and personality, changing relationships andf their connection with parents and peers |
| 3 | Geography | Environmental Geography & Geography of Health | Holistic perspective of health encompassing society and space |
| 4 | Geography | Marketing Geography | Geomarketing research is the use of geographic parameters in marketing,helpful in research methodology,including sales and distributions |
| 5 | Political Science | Indian Political Thought,Indian Democracy, Political Theory, | To have a solid understanding for the |



| S. No. | Department | Prioritized research area and expertise | Social/ Economic Context |
|--------|------------|---|---|
| | | Gender Studies | system which govern the society and to understand the global political economy |
| 6 | History | History of Bundelkhand | Awareness of Cultural Heritage |
| 7 | Music | Dhrupad, Khayal,Dance | To enhance the schools of music and to create |
| 8 | Painting | Wall Paintings, Raagmala,Pandulipi | To develop the skill of particular school and to revive and transfer our heritage,art and culture |
| 9 | Hindi | Samkaleen Kavita,Hindi ka Vaishvikaran | Substantive finding of New trends of poetry |
| 10 | English | Gender Studies,Postcolonial Studies, Indian Writing in English, Partition Studies | Major impact on the development of society, changed political system and exposed injustice |
| 12 | Sanskrit | Hindu & Jain Darshan | to revive and transfer our heritage, literature and culture |



| S. No. | Department | Prioritized research area and expertise | Social/ Economic Context |
|--------|---------------|--|---|
| 13 | Urdu | Qadeem Deccan Shayari | To add and enhance Urdu Adab |
| 14 | History | Gandhian Philosophy & Tourism | Worldwide solutions to the problems |
| 15 | Zoology | Wild Life, Aquatic Biology & Limnology | To study adverse |
| 16 | Chemistry | Thermodynamics Properties Surfactants, Natural Product & Synthetic Organic Chemistry | Important role in pharmaceuticals, Food industry, cosmetic industry, paint industry |
| 17 | Biotechnology | Mycology & Plant Pathology | helpful in medical sciences, Agriculture |

Publication in National and International Journals/ Anthology

Publication in Journals

| S.No | Name of the Faculty | Name of the Journal | Title of the paper | ISSN No |
|------|---------------------|---|--|---|
| 1. | Sukriti Ghosh | Journal of Magnetism and Magnetic Materials | First-principal study of full Heusler alloys Co ₂ VZ (Z = As, In) | Print ISSN: 0304-8853 Online ISSN: 1873-4766 |



कार्यालय प्राचार्य, शासकीय कमलाराजा कन्या स्नातकोत्तर स्वशासी महाविद्यालय, ग्वालियर GOVT. KAMLA RAJA GIRLS P.G. AUTO. COLLEGE, GWALIOR (M.P.) INDIA

(Affiliated to Jiwaji University, Gwalior under 2(f) & 12(b) NAAC – 'A' Grade Accredited Institute)

www.krgcgwalior.org krgc@rediffmail.com Phone: 0751- 2625495, 0751-2438173

| | | | | |
|----|----------------------------|--|---|--|
| 2. | Poorti Pandey | Critical Reviews in Oncology/Hematology | The see-saw of Keap1-Nrf2 pathway in cancer | Online ISSN: 1879-0461 Print ISSN: 1040-8428 |
| 3. | Charu Katore | J Complement Med Alt Healthcare | Exploring Acceptability and Possible Therapeutic | 2572-1232 |
| 4. | Dr. Waseem Iftikhar Ansari | Monthly Mehfil - E-Fankar Gwalior | Implication of Lagenaria Siceraria Pulp Powder | Not yet |
| 5. | Dr. Kumkum Mathur | Central India journal of historical and archaeological research Vol. 6/7 no 24/25 P: 196-200 | Gwalior ke Ganesh mandir ka Pratimankan | 2277-4157 |
| 6. | Dr. Meena Shrivastava | A Journal of Asia for Democracy and Development Vol: XVIII(1-2) | Atihashik paripekshya me bhartiya sangeet ka rashtrayavadi swaroop | ISSN: 0973-3833 |
| 7. | Dr. Meena Shrivastava | History Times Vol: 11 | Vartman me adiwashi sanskriti ka avlokan | ISSN: 2321-5054 |
| 8. | Dr. Charu Chitra | IOSR Journal of humanities and social sciences (IOSR-JHSS) Vol. 22, Issue (8,9 Sep 2017) | Religious Minorities - Their sense of Insecurity , Anxiety and threat with special references to Rohinton's Mistry's Novel "Family Matters" | P-ISSN: 2279-0845 E-ISSN: 2279-0837 |



| | | | | |
|-----|-------------------|--|--|----------------|
| | | | (37-43) | |
| 9. | Dr. Charu Chitra | IJELLH - International journal of English language , literature in humanities vol. 5 Issues 9 Sep 2017 | Rohinton ministry's Such A long Journey -A narrative of Parsi community – Their Anxiety, Fear and sense of insecurity 97-110 | 2321-7065 |
| 10. | Dr. Beena Lad | New Man International Journal of Multidisciplinary Studies A refereed and Indexed E-Journal Vol-4, Issue-10 | Confessional Note in the Poetry of Syivia Plath | 2348-1390 |
| 11 | Dr. Charu Chitra, | International Journal Of Engineering Technology Management, and Applied sciences IJETMAS Vol.5,Issues 7/7/2017 | Aravind Adiga's Novel 'Between The Assassinations'- A social criticism of caste , class and communal disharmony 602-606 | 2349-4476 |
| 13 | Dr. B.B.singh, | Wireless personal Communications An International Journal Vol:99 No.10 | Provably secure certificate-based Proxy blind signature scheme from pairings | ISSN:0929-6212 |
| 14 | Dr. B.B.singh, | Wireless personal Communications An International Journal Vol:99 No.10 | Short Certificate- based Proxy Signature Scheme from Pairings | ISSN:0929-6212 |



| | | | | |
|----|-----------------------------|---|---|--|
| 15 | Dr. Nisha Mishra, | Naveen Shodh Sansar (An International Multidisciplinary Refereed Journal), Vol- 3, Issue-21 | Bharat mein Suchna Prodhyogiki Udhyog ka Vartmaan Paridhrishya Vikaas evam Chunotiya | E-ISSN: 2394-3793 ISSN: 2320-8767 |
| 16 | Prof. Urmila singh Tomar | Rashtriye shodh sangosthi | Sahitiya or samaaj | ISSN: 8248-4218 |
| 17 | Dr.Kumkum Mathur | Shodh drishti vol-9 no- 5 Pn 83-89 | Nayika's in datia miniature paintings | 0976-6650 |
| 18 | Dr. N.K. Nagaich | International Journal of Resaerch culture society P(196-197) | A Comparative study of Stress level on college students of Gwalior City | 2456-6683 |
| 19 | Dr. Meena shrivastava | History Times Vol.10 | Sindhiya Athbha Sardar School ka Atihashik pariprekshaya Adhyyan | ISSN: 2321-5054 |
| 20 | Dr. Nisha Mishra, | Naveen Shodh Sansar (An International Multidisciplinary Refereed Journal), Vol- 3, Issue-21 | Bharat mein Suchna Prodhyogiki Udhyog ka Vartmaan Paridhrishya Vikaas evam Chunotiya | E-ISSN: 2394-3793 ISSN: 2320-8767 |
| 21 | Dr. K. Ratnam | Shodh Yatra An International quarterly multifaculty research Journal Vol.:57, Year:26 | Mahatma Gandhi ke rajnaitik vicharo ki darshnik prashthbhoomi | 2231-0428 |
| 22 | Dr. Asha Singh Rawat | Pramana Research Journal Year-7, Issue- | Bhakt Mahakavi Shri Roop Goswami ka | 2249-2976 |



कार्यालय प्राचार्य, शासकीय कमलाराजा कन्या स्नातकोत्तर स्वशासी महाविद्यालय, ग्वालियर
GOVT. KAMLA RAJA GIRLS P.G. AUTO. COLLEGE, GWALIOR (M.P.) INDIA
 (Affiliated to Jiwaji University, Gwalior under 2(f) & 12(b) NAAC – 'A' Grade Accredited Institute)
www.krgcgwalior.org krgc@rediffmail.com Phone: 0751- 2625495, 0751-2438173

| | | | | |
|----|---------------------------|--|---|----------------------------------|
| | | 27 (Part-II) | Sanskrit Natyashastra aur Kavyashastra ka Yogdaan | |
| 23 | Dr. Urmila Singh Tomar | Sodhayan An international Quarterly Multidisciplinary Research Journal, Year:6, Vol:24 | Mradula Sinha ke Sahitya mein Naari | 2249-7536 |
| 24 | Dr. Urmila Singh Tomar | Sodh Yatra An international Quarterly Multidisciplinary Research Journal Vol- 58 | Rashtrawad ki Sankalpana aur uske vividh aayaam | 2231-0428 |
| 25 | Dr. Madhu Laxmi Sharma | Original Research Article International Journal of Recent trends in Science and Technology | Some Social Issues in relation to the environment and public awareness | P: 2277- 2812 E: 2249-8109 |
| 26 | Dr. Sonia Singh | Ingit | Sahitya ka Samarthya | 2454-6305 |
| 27 | Dr. Madhu Laxmi Sharma | International Journal of Academic Research and Development Special Issue | Puplic Participation For Sustainavle development of the environment:Need of Today | ISSN (Online): 2455-4197 |
| 28 | Dr. Charanjeet Kaur | Research Line A quarterly Multi Disciplinary and Referred International | Baagwani ki adhunik taknik | 2321-2993 |



| | | | | |
|----|-----------------------------|--|---|---|
| | | Journal Vol.:27 Quarterly | | |
| 29 | Prof. Urmila singh Tomar | Rashtriye shodh sangosthi | Sahitiya or samaaj | ISSN: 8248-4218 |
| 30 | Dr. Charanjeet Kaur | Research Journal of Bundelkhand Refereed Journal , Vol.:10 | Aawas hetu Karyasheel Vibhinn Vittiya SAnsthayo ke Hitgrahiyo ke SAntosh Ka Tulnatmak Adhyayan | 2395-7816 |
| 31 | Dr Savita Shrivastav | University Grants Commission ,New Delhi Recognized Journal Vol-6+, Issue-1 | The Theme of Self Belongingness in Toni Morrison's Song of Solomon | 2347-503X (Online) ISSN: 2347-5021 |
| 32 | Dr. Abha Mishra | Lokmangal Patrika, Vol-42, Year 11 | Sarjanatmak Lekhan ki Prayojanmulakata | ISSN 2250- 0448 |
| 33 | Dr. N.K. Nagaich | Psychology An International Registered and Referred Monthly Journal, Vol.:16(12) P: 85-86 | A comparative study of some personality traits of male and female doctors and professors | 0973-1628 |
| 34 | Dr. Kavita Agrawal | The Creative Launcher An International Open Access E-Journal in English, Vol.:2, Issue:5 | World peace and contemporary Security Issues: An Outlook | 2455-6580 |
| 35 | Dr. Shailja Jain, | The Pharma Innovation Journal , Vol.:7(5) | Role of Fiber Rich Diets in Management of | E: 2277- 7695 P: 2349-8242 |



कार्यालय प्राचार्य, शासकीय कमलाराजा कन्या स्नातकोत्तर स्वशासी महाविद्यालय, ग्वालियर
GOVT. KAMLA RAJA GIRLS P.G. AUTO. COLLEGE, GWALIOR (M.P.) INDIA

(Affiliated to Jiwaji University, Gwalior under 2(f) & 12(b) NAAC – 'A' Grade Accredited Institute)

www.krgcgwalior.org krgc@rediffmail.com Phone: 0751- 2625495, 0751-2438173

| | | | | |
|----|-------------------------|---|--|----------------|
| | | P:88-93 | Blood Pressure of Human Type-2 Diabetes Mellitis With Special Reference to Gwalior) | |
| 36 | Dr. N.K. Nagaich | Psychology An International Registered and Referred Monthly Journal, Vol.:16(12) P: 126-127 | The Relationship between emotional Intelligence and problem solving skills in students | 0973-1628 |
| 37 | Dr. Asha Singh Rawat | Chintan International Refereed Journal, Vol-29, Year-28 Khand-2 | Prachin Pramukh Sanskrit Mahakavyo mein Jeewan Mulya | 2229-7227 |
| 38 | Dr. Urmila Singh Tomar, | Research Line A quarterly Multi Disciplinary and Referred International Research journal, Vol-29 | Time Management in E-Learning (New Age Economic Reforms in India) | 2321-2993 |
| 39 | Dr. Kumkum Mathur | Central India Journal of historical and archaeological research CIJHAR vol-6 July-sep 2017 PG 218-224 | Gwalior main Scindia Kaleen kalaon ke vividh swaroop | 2277-4157 |
| 40 | Charu Katore | Research Line vol XXVII | Millet Nutrition :A Review | ISSN 2321-2993 |
| 41 | Dr. N.K. Nagaich | Psychology : An International | Impact of Parental Attitude on Personality | 0973-1628 |



| | | Registered and Referred Monthly Journal Vol.: 16(11) | of Their Children | |
|----|------------------------|--|--|---------------------------|
| 42 | Dr. Urmila Singh Tomar | Ingit | Hindi ki Sahityik Patrikaye : Uddheshya evam Mahatv | 2454-6305 |
| 43 | Dr. V.K. Bansal | Shodhayan (An International Quarterly Multidisciplinary Research journal, Vol-23, Year;5 | Bharat mein Swashtya Beema ka Vikas evam vartmaan Sthiti | 2249-7536 |
| 44 | Dr. Asha Singh Rawat | Sanskrit Manjari An International Refereed Quarterly Research Journal, Vol-2, Year 16 | Ashwaghosh ka Vaidushya | 2278-8360 |
| 45 | Dr. Beena Lad | New man International Journal of Multidisciplinary Studies Vol-4, Issue-10 | Satire on the Contemporary Indian Society in the Select Plays of Vijay Tendulkar | 2454-5503 |
| 46 | Dr. Alka Singh | Bodhi International Journal of Research in Humanities, Arts and Science Vol-2, No:1 | The Contradiction between past present and future in fictional plots of George Orwell – A critical study | 2456-5571 |
| 47 | Dr. Mohit Arya | Asian Resonance. Vol. 7, Issue 5, pp. 26-85 | Diversity of avifauna in the campus of Govt. Kamla Raja Girls | P: 0976-8602 E: 2349-9443 |



कार्यालय प्राचार्य, शासकीय कमलाराजा कन्या स्नातकोत्तर स्वशासी महाविद्यालय, ग्वालियर
GOVT. KAMLA RAJA GIRLS P.G. AUTO. COLLEGE, GWALIOR (M.P.) INDIA
(Affiliated to Jiwaji University, Gwalior under 2(f) & 12(b) NAAC – 'A' Grade Accredited Institute)
www.krgcgwalior.org krgc@rediffmail.com Phone: 0751- 2625495, 0751-2438173

| | | | | |
|----|-------------------------------|--|---|-----------|
| | | | Postgraduate College, Gwalior, M.P., India. | |
| 48 | Dr.Kumkum Mathur | History times vol-10 P: 28-31 | Kamla Raja mahavidyalaya ke chitrakala vibhag main darshit sindhiya kaaleen sanskriti ke chitratmak jhanki | 2321-5054 |
| 49 | Dr. Kumkum Mathur | International journal of advanced research and development | Mythological miniature paintings of orcha datia school in 17-18th century Pn 1410-1412 | 2455-4030 |
| 50 | Dr Savita Shrivastav | Chronicle of Humanities and Cultural Studies, Vol.:4, Issue: 2 | Culture Alienation in Toni Morrison's Tar baby | 2454-5503 |
| 51 | Dr. Charu Katare | Indian journal of Applied Research IJAR vol. 8, Issue 3 | Millet: The Nutritious and Climate Change Compliant Food Crop | 2249-555X |
| 52 | Dr. Urmila Singh Tomar | Shodh Patra Sankalya Tramasik No. -4, Year 45 | Kahaani ke Pratimaan | 2277-9264 |
| 53 | Dr. Shailendra Singh Tomar | Research Analysis and Evaluation An International Indexed Interdisciplinary Multilingual, Monthly Research Journal, | Gwalior evam Chambal Sambhaag mein Paryatan vikaas ki Samasyaye evam Sambhavnaye | 0975-3486 |



| | | | | |
|----|--------------------------|---|--|--|
| | | Issue-102-103 | | |
| 54 | Dr. Suraj Bhan Prajapati | Research Line A Quarterly Multi Disciplinary and Refereed International research Journal, Vol-29, | Peace of Quality of Work Life on Employee Morale | 2321-2993 |
| 55 | Dr. Urmila Singh Tomar | Sodh Yatra An international Quarterly Multidisciplinary Research Journal Vol-58 | Hindi Sahitya aur Rashtapaar ke aayam | 2231-0428 |
| 56 | Dr. Rashmi Chaudhary | Interdisciplinary multilingual refereed journal issue-39, Vol.5 | The Impact of micro-management plan in Economy of Khanpura, Machio-Purena Village in Guna District | 2394-5303 |
| 57 | Dr. Charu Katore | International Journal of Diabetes in Developing Countries 37 (4), 426-431 | Estimation of glycemic carbohydrate and glycemic index/load of commonly consumed cereals, legumes and mixture of cereals and legumes | ISSN 1998-3832 Print ISSN 0973-3930 |
| 58 | Dr. Seema Shukla | Shodh Yatra | Paryavaran ki Bhartiya Avdharna | ISSN: 2231-0428 |
| 59 | Dr. ANITA SINGH | Vidyawarta Internation Multilingual Reach | Mahila Shurakha hatu Dahej pravdhano ki | ISSN:2319-9138 |



| | | Journal | vykhyat- Ak Adhyan | |
|----|----------------------|--|---|-----------|
| 60 | Dr. ANITA SINGH | An International Multidisciplinary E-Journal Vol.4 | Mahilaon ke Virudh Apradhon ki Sthithi: Ek vishleshnatmak Addhyan | 2394-5303 |
| 61 | Dr. Priyanka Karolia | | Voltammetric Sensing Based on the use of Advanced Carbonaceous Nanomaterials A Review | 1452-3981 |
| 62 | Swati kabra | American Institute of Physics (AIP) | Micro Structural Analysis and magnetic Characteristics of rare earth substituted Cobalt ferrite | 1.69 |
| 63 | Swati kabra | American Institute of Physics (AIP) | Rare earth Substitution on Structural and optical behaviour of CdSe thin films | 1.69 |
| 64 | Swati kabra | Advanced Material | Effect of Mn Substitution on Structural and Magnetic Properties of cobalt Ferrite | 1.1 |
| 65 | Swati kabra | Advanced Material | Synthesis and Characterization on Mn Composition Effect on CdSe thin Films | 1.1 |



कार्यालय प्राचार्य, शासकीय कमलाराजा कन्या स्नातकोत्तर स्वशासी महाविद्यालय, ग्वालियर
GOVT. KAMLA RAJA GIRLS P.G. AUTO. COLLEGE, GWALIOR (M.P.) INDIA
 (Affiliated to Jiwaji University, Gwalior under 2(f) & 12(b) NAAC – 'A' Grade Accredited Institute)
www.krgcgwalior.org krgc@rediffmail.com Phone: 0751- 2625495, 0751-2438173

| | | | | |
|----|---------------------------|--|---|---------------------|
| 66 | Dr. Madhubala Kulshrestha | History Times Vol:10 P:32-37 | Scindia rajao ke Gwalior kila taksaal se Jaari tambe ke Sikke : Ek Adhyayan | ISSN:2321-5054 |
| 67 | Dr.P.K. Bansal | Shodhayan Vol:25 Year-6 | Job satisfaction :An Empirical Study Among Police Officers | ISSN: 2249-7536 |
| 68 | Dr. Abha Mishra | Lokmangal Patrika Vol-40, Year-10 | Nai Kavita ki soundarya Drishti | ISSN 2250-0448 |
| 69 | Dr. A.K. Yadav, | Interdisciplinary multilingual refreed journal issue-39, Vol.5 | The Impact of micro- management plan in Economy of Khanpura, Machio-Purena Village in Guna District | 2394-5303 |
| 70 | Dr. Kumkum Mathur | A Peer Reviewed Research Journal of History & Archaeology | 20वीं Sadi ka antarrashtriy khyat chitrkar maqbool Fida Husain | ISSN - 2321-5054 |
| 71 | Dr. P.k Bansal | Shodhayan International Quarterly Multi-Disciplinary UGC Approved Research Journal | Impact of Business Ethics on Entrepreneurship Management | 2249-7536 |
| 72 | Dr. Kumkum Mathur | Journal of Mp Itihas parishad (Editor) | Rashtravaad Se Pariplut chitrakar laxman laika vyaktiva aur krativa | 2231-2749 |
| 73 | Charanjeet kaur | Shodh prakalp A | Rashtriya gramin | ISSN: 2278-3911 |



कार्यालय प्राचार्य, शासकीय कमलाराजा कन्या स्नातकोत्तर स्वशासी महाविद्यालय, ग्वालियर
GOVT. KAMLA RAJA GIRLS P.G. AUTO. COLLEGE, GWALIOR (M.P.) INDIA

(Affiliated to Jiwaji University, Gwalior under 2(f) & 12(b) NAAC – 'A' Grade Accredited Institute)

www.krgcgwalior.org krgc@rediffmail.com Phone: 0751- 2625495, 0751-2438173

| | | | | |
|----|-----------------------|---|---|------------------|
| | | quarterly Research Journal | swasthya mission ke antargat gramin mahilaon mein Parivar niyojan ki Di jaane wali jankari ka vishleshnatmak adhyayan | |
| 74 | Kalpana Sharma | Lokmangal Patrika | Bhumandlikaran ke prabhav Se Hindi ka badalta paridrishya | ISSN: 2250-0448 |
| 75 | Kalpana Sharma | Lokmangal Patrika | Manavta ka Samagra Vikash or yog | ISSN: 2250-0448 |
| 76 | Dr. Sandhya Moghe | Paarmita Darshan Parishad Mp and Chhattisgarh | Mantra Shakti | 0975-2560 |
| 77 | Dr. Meena Shrivastav | Shodhak A Journal of Historical Research Vol-47 | Rashtrawadi Vichardhara ke Mahamanishi Pt. Deendayal Upadhyay P:222-225 | 0302-9832 |
| 78 | Charanjeet singh kaur | Shodh prakalp A quarterly Research Journal Vol:LXXXIII | Grameen garbhhati mahilao me stanpan samvandhi jagrukta ka adhyayan | ISSN: s2278-3911 |
| 79 | Dr. Abha Mishra | Vidyawarta Interdisciplinary multilingual Referred Journal Issue-26, Vol- | Fadishwer Nath Renu ke Katha Sahitya ke paatra | ISSN 2319-9318 |



| | | | | |
|----|------------------------------|---|---|---------------------------------------|
| | | 02 | | |
| 80 | Dr. Madhubala Kulshrestha | Journal of the MP Ithihas Parishad No.30 Page : 1-06 Editor: Dr. R.N. Shrivastav | Kansua Shilalekh: Ek Tathya parakh Adhayyan | 2231-2749 |
| 81 | Dr. Madhubala Kulshrestha | Chhattisgarh Vivek Research Journal Kalyan PG College Bhilai nagar (Chhattisgarh), No.-58, Year 17 | Hindi Patrakarita aur Bhartiyata | 0972-9909 |
| 82 | Dr. Amita Tiwari | Fundamental Research A Monthly Multidisciplinary Research Journal, Vol- 08, Issue:1 | A Correlative Study of Parent Child Relationship with Academic Achievements of Adolescents | 2452-5775 |
| | Dr. Meena Shrivastav | A journal of Asia for Democracy and Development, A Quarterly Journal of Social Sciences Vol-17, | Gwalior ka ek Nayab Nakshatra: Sangit Samrat Tansen P: 87-90 | 0973-3833 |
| | Dr. Amita Tiwari, | Journal of Environmental Research and development, Vol-12, No-3 | Compare The Academic Anxiety in Private School and Government School | 0973-6921 E- ISSN:2319- 5983 |
| | Dr. Amita Tiwari, | Journal of | To study Gender | 0973-6921 |



कार्यालय प्राचार्य, शासकीय कमलाराजा कन्या स्नातकोत्तर स्वशासी महाविद्यालय, ग्वालियर GOVT. KAMLA RAJA GIRLS P.G. AUTO. COLLEGE, GWALIOR (M.P.) INDIA

(Affiliated to Jiwaji University, Gwalior under 2(f) & 12(b) NAAC – 'A' Grade Accredited Institute)

www.krgcgwalior.org krgc@rediffmail.com Phone: 0751- 2625495, 0751-2438173

| | | | | |
|--|----------------------|--|---|-------------------------------------|
| | | Environmental Research and development, Vol-12, No-3 | Differences in Parent-Child Relationship in Late Childhood | E-ISSN:2319-5983 |
| | Dr. Meena Shrivastav | A journal of Asia for Democracy and Development, Vol-17(3), | Lal Bahadur Shastri ka Prarambhik Jeewan, Karya evam Videsh Neeti | 0973-3833 |
| | Dr. Meena Shrivastav | Itihas- Sanshodhan Journal of Historical Research and Studies, Vol-7, No. 13 | Bharat mein Rashtrawadi Vichardhara ke Uthathan mein Samachar Patro ki bhoomika | 2277-5609 |
| | Dr. Meena Shrivastav | Journal of the Madhya Pradesh Itihas parishad, No-30 | Asah ke tomar jaagidar aur puratatvik stroto ka sarvekshan | 2231-2749 |
| | Dr. Sukriti Ghosh | Journal of Super conductivity and Novel Materials | High pressure and temperature dependence of electronic, magnetic elastic and Transport properties of full Haussler alloy Co ₂ YIN Cy Nb, ZR) | 1557-1939 |
| | Dr. Manju Dubey | Naveen Shodh Sansar An International Refereed Journal International Research | Consumer problems and Relevant Legislations | EISSN: 2394-3793 ISSN: 2320-8767 |



कार्यालय प्राचार्य, शासकीय कमलाराजा कन्या स्नातकोत्तर स्वशासी महाविद्यालय, ग्वालियर
GOVT. KAMLA RAJA GIRLS P.G. AUTO. COLLEGE, GWALIOR (M.P.) INDIA

(Affiliated to Jiwaji University, Gwalior under 2(f) & 12(b) NAAC – 'A' Grade Accredited Institute)

www.krgcgwalior.org krgc@rediffmail.com Phone: 0751- 2625495, 0751-2438173

| | | Journal | | |
|--|---------------------------|---|--|-------------------------------------|
| | Dr. Madhubala Kulshrestha | History Times Research Journal of Historical Archeological Bundelkhand Itihas Parishad Gwalior (M.P.) History Times Vol.9 Page- 22-28 | Gautam Buddh aur Baoddh Dharm ke Mool Tatv | 2321-5054 |
| | Dr. Alka Singh | Chronicle of Humanities and Cultural Studies A Bimonthly Refereed International Journal, Vol.:4, No.:2 | Magical Realism in Ben Okri's The Famished Road | 2454-5503 |
| | Dr. Manju Dubey | Naveen Shodh Sansar An International Multidisciplinary Refereed Journal International Research Journal | Consumer Protection act 1986 and Consumer's satisfaction | EISSN: 2394-3793 ISSN: 2320-8767 |
| | Dr. Madhubala Kulshrestha | Chhattisgarh vivek P:5-10 No:59 Year-18 | Gandhi vichardhara ke mool tatve ek adhyayan | ISSN: 0972-9909 |
| | Dr. Meena Shrivastav | History Times Research Journal of History & Archeology, Vol.:09 | Jayaji Pratap aur Mahila Jaagan | 2321-5054 |
| | Dr. Meena | An International | Gwalior mein Janjagan | 2277-4157 |



| | | | | |
|--|------------------------------|--|--|--|
| | Shrivastav | Journal of Central India Journal of Historical and Archeological Research (CIJHAR) Vol-6 , No.24 | aur 'Jayaji Pratap' | |
| | Dr Savita Shrivastav | International Journal of Innovative Knowledge Concepts, Vol-6, Issue- 4 | Black is Beautiful: The perception of blackness in Toni Morrison's Novels | 2454-2415 |
| | Dr. Madhubala Kulshrestha | Shodhak A Journal of Historical Research Vol.48 P: 39-45 | Gwalior Riyasat mein prachalit naap talika evam baant | 0302-9832 |
| | Dr. Charu Chitra | Itihas Sanshodhan Volume 7 Issue 13 February 2018-July 2018 | History of Pain and Partition- From Pages of Pinjar to Silver Screen | 2277-5609 |
| | Dr. K. Ratnam | National Research Journal of Humanities & Social Sciences Vol- 6 No.-11 | Brithish | 2321-8282 |
| | Dr. K. Ratnam | National Research Journal of Humanities & Social Sciences Vol- 6 No.-11 | Ahimsa and its implications on the vision of Gandhian Ram | 2321-8282 |
| | Dr. Shailja Jain, | IOSR Journal of Dental and Medical Science (IOSR-JDMS) Vol.17 Issue:5 P-56-62 | Effectivness of supplementation of Gluten Free and Casein Free Foods with the | E-ISSN: 2279-0853 P- ISSN:2279- 2861 |



| | | | | |
|--|---------------------------|---|--|------------------|
| | | | decreasing symptoms of Atistic Children | |
| | Dr. Madhubala Kulshrestha | Chhattisgarh vivek P:5-10 No:59 Year-18 | Gandhi vichardhara ke mool tatve ek adhyayan | ISSN: 0972-9909 |
| | Amita tiwari | Trends and issues in global bussiness management and humanities | Effect of adjustments on academic achievements of adolescents in gwalior city | |
| | Madhubala Kulshreshth | ITI HAS SANSKODHAN, CIHRF, GWALIOR, VOL-6, NO.13, JULY, 2018 | Madhya prant mein jhanda satyagrah-1923 | ISSN : 2277-5609 |
| | charu chitra | International journal of english language literature and translation studies (IJELR) | The Sufferings and struggle of a mother haleema for her disappeared son imran - In shahnaz bashir's half mother mohammad yaseen pandith 1, | |
| | Meena shrivastava | The journal of the meerut university history Alumni | Manavwad ke poshak pandit deendayal upadhyay | 0973-5577 |
| | charu chitra | Itihas Sanshodhan Volume 7 Issue 13 February 2018-July 2018 | Rohinton ministry's an indian diaspora parsi writer his commentary on nationalism, socio-political aspects vis-a- | |



कार्यालय प्राचार्य, शासकीय कमलाराजा कन्या स्नातकोत्तर स्वशासी महाविद्यालय, ग्वालियर
GOVT. KAMLA RAJA GIRLS P.G. AUTO. COLLEGE, GWALIOR (M.P.) INDIA
 (Affiliated to Jiwaji University, Gwalior under 2(f) & 12(b) NAAC – 'A' Grade Accredited Institute)
www.krgcgwalior.org krgc@rediffmail.com Phone: 0751- 2625495, 0751-2438173

| | | | | |
|--|---------------------------|--|--|-----------------|
| | | | vis india | |
| | Dr. Shailja Jain, | European journal of biomedical and pharmaceutical science | Review of gestational hypertension causes, risk, consequences and management | 2349-8870 |
| | Dr. Shailja Jain, | European journal of biomedical and pharmaceutical science | Review of gestational diabetes Risk factor, diagnosis management and future perspectives | 2349-8870 |
| | Urmila sinhg tomar | Ingit | Sahitya ka Samarthya | 2454-6305 |
| | Dr. Swapna Marathe | Shodhayan No:25 | Bhartiye Shastriye sangeet me thumri Gayeki ki prasangeeta | ISSN: 2249-7536 |
| | Dr.Waseem Iftekhar Ansari | INTERNATIONAL Monthly Urdu Duniya | Burhanpur Mein Urdu Ka Taabnaak Maazi | ISSN 2249-0639 |
| | Dr.Waseem Iftekhar Ansari | International Monthly urdu journal "Hakim Ul Ummat" Srinagar-Kashmir | Urdu Shairi Mein Samaji Hum Aahangi | ISSN-3021-4213 |
| | Dr.Waseem Iftekhar Ansari | QUARTERLY JOURNAL ADBI NASHEMAN LUKHNOW (U.P.) | Muqadma Navesi Ke Mutalliq Chand Maroozaa | ISSN-2581-5482 |
| | Dr.Waseem Iftekhar Ansari | Monthly urdu angan mumbai (MS) | Iqbal aur atfal | Issn 2582-3957 |
| | Dr.Waseem Iftekhar Ansari | Monthly urdu angan mumbai (MS) | Muqadma Navesi | Issn 2582-3957 |



कार्यालय प्राचार्य, शासकीय कमलाराजा कन्या स्नातकोत्तर स्वशासी महाविद्यालय, ग्वालियर
GOVT. KAMLA RAJA GIRLS P.G. AUTO. COLLEGE, GWALIOR (M.P.) INDIA
 (Affiliated to Jiwaji University, Gwalior under 2(f) & 12(b) NAAC – 'A' Grade Accredited Institute)
www.krgcgwalior.org krgc@rediffmail.com Phone: 0751- 2625495, 0751-2438173

| | | | | |
|--|-------------------------------|--|--|-----------|
| | Dr.Waseem Iftekhhar Ansari | Baligh Nazar Nasar Nigar-Sahil | Gwalior Achal main Urdu Shayri | |
| | Dr. P.k Bansal | Shodhayan International Quarterly Multi-Disciplinary UGC Approved Research Journal | Impact of Organizational Environment on Job satisfaction Among Police Employee in Gwalior | 2249-7536 |

Books

| Sr No. | Title with page numbers | Type of Authership | ISBN number | Author |
|-----------|--|-----------------------|-----------------------|-----------------------------|
| 1. | Contemporary Issues in Commerce & Mnagement | | 978-93- 86369-06-2 | Dr. Harish kumar Agrawal |
| 2. | Bab-e- Dakan Burhanpur | | 978-81- 93380-0-1 | Shabana Nikhat Ansari |



| | | | | |
|----|------------------------------------|--|-------------------|---------------------------|
| 3. | Jansanchar Madhyam aur Hindi | | 97-81-93-1100-0-3 | Dr Rajrani Sharma |
| 4. | Aupniveshik bharat mein rashtrawad | | 978-93-83762-81-1 | Dr. K. Ratnam |
| 5. | Gwalior Kshetra ka itihās | | 978-93-84040-15-4 | Dr. Madhubala Kulshrestha |

Chapters

| S. No. | Title of the Book | Title of Chapter Edited | ISBN No. | Author |
|--------|--|---|-------------------|---------------------|
| 1. | Human Concerns And Issues In English Language And Literature | Tara: The Tragedy of a Siamese Twins | 978-81-926634-5-6 | Dr. Charu Chitra |
| 2. | Jansanchar Madhyam aur Hindi | suchna kranti aur hindi ka vaishwik swaroop | 978-81-931100-0-3 | Abha Mishra |
| 3. | Jansanchar Madhyam Aur Hindi | Bhartiya Patrakarita Aur Navgajran | 978-81-931100-0-3 | Dr. Alka Maurya |
| 4. | Jansanchar Madhyam Aur | Jansanchar Avdharna Evam Samajikaran | 978-81-931100-0-3 | Dr. Archana Kushwah |



कार्यालय प्राचार्य, शासकीय कमलाराजा कन्या स्नातकोत्तर स्वशासी महाविद्यालय, ग्वालियर
GOVT. KAMLA RAJA GIRLS P.G. AUTO. COLLEGE, GWALIOR (M.P.) INDIA
(Affiliated to Jiwaji University, Gwalior under 2(f) & 12(b) NAAC – 'A' Grade Accredited Institute)

www.krgcgwalior.org krgc@rediffmail.com Phone: 0751- 2625495, 0751-2438173

| | | | | |
|-----|--|---|-----------------------|--------------------------|
| | Hindi | | | |
| 5. | Jansanchar Madhyam Aur Hindi | Apsanskriti ke Prerak: Jansanchar Madhyam | 978-81- 931100-0-3 | Dr. Ila Shukla |
| 6. | Jansanchar Madhyam Aur Hindi | Jansanchar ka Sashakt Madhyam: Hindi Samachar Patra | 978-81- 931100-0-3 | Dr. Kalpana Sharma |
| 7. | Jansanchar Madhyam Aur Hindi | Sanchar Kranti Aur Hindi Bhasa | 978-81- 931100-0-3 | Dr. Meena Shrivastava |
| 8. | Jansanchar Madhyam Aur Hindi | Sanchar Madhyam ka Hindi Paripreksh | 978-81- 931100-0-3 | Dr. Namita Tripathi |
| 9. | Jansanchar Madhyam Aur Hindi | Jansanchar Madhyam ka Lokpriye Vikalp: Social Networking | 978-81- 931100-0-3 | Dr. Rajrani Sharma |
| 10. | Jansanchar Madhyam Aur Hindi | Vigyapan ke Samajik Sarokar | 978-81- 931100-0-3 | Dr. Sandhya Moghe |
| 11. | Jansanchar Madhyam Aur Hindi | Samachar Patro ki Hindi | 978-81- 931100-0-3 | Dr. Sudha Kushwah |
| 12. | Jansanchar Madhyam Aur Hindi | Hindi Cinema Aur Bhartiye Samaj: Ek Vivechna | 978-81- 931100-0-3 | Dr. Urmila Singh |
| 13. | Suchana Prodhaugiky Samaj, Sanskriti | Balika sashaktikaran ki or badhate kadam ek samajik Chintan | 978-81-8129- 710-5 | Dr. Archana kushwah |



कार्यालय प्राचार्य, शासकीय कमलाराजा कन्या स्नातकोत्तर स्वशासी महाविद्यालय, ग्वालियर
GOVT. KAMLA RAJA GIRLS P.G. AUTO. COLLEGE, GWALIOR (M.P.) INDIA
(Affiliated to Jiwaji University, Gwalior under 2(f) & 12(b) NAAC – 'A' Grade Accredited Institute)
www.krgcgwalior.org krgc@rediffmail.com Phone: 0751- 2625495, 0751-2438173

| | | | | |
|-----|---|--|-----------------------|---|
| | aur Mahila Sashaktikaran | | | |
| 14. | Suchana Prodhaugiky Samaj, Sanskriti aur Mahila Sashaktikaran | Information and Communication Technology in Agriculture: (The Road Ahead) | 978-81-8129- 710-5 | Dr. Anju Yadav |
| 15. | Suchana Prodhaugiky Samaj, Sanskriti aur Mahila Sashaktikaran | Mahila Sashaktikaran Evam Bhartiya Samaj | 978-81-8129- 710-5 | Dr.Archana kushwah & Dr. Amit Sharma |
| 16. | Suchana Prodhaugiky Samaj, Sanskriti aur Mahila Sashaktikaran | Kamkaji Mahilaon ki Samasyaen | 978-81-8129- 710-5 | Dr. Archana Kushwah & Dr. Hemlata Indurikhia |
| 17. | Suchana Prodhaugiky Samaj, Sanskriti aur Mahila Sashaktikaran | Kamkaji Mahilaon ki Samasyaen | 978-81-8129- 710-5 | Dr.Archana Kushwah & Dr. Anita Tomar |
| 18. | Suchana Prodhaugiky Samaj, Sanskriti aur Mahila Sashaktikaran | Bharat mein Mahila Sashaktikaran ke Prayas aur Chunautiyan | 978-81-8129- 710-5 | Dr. Archana kushvah & Dr. Mukesh Sagar |
| 19. | Suchana | Gramin Mahila | 978-81-8129- | Dr.Archana |



कार्यालय प्राचार्य, शासकीय कमलाराजा कन्या स्नातकोत्तर स्वशासी महाविद्यालय, ग्वालियर
GOVT. KAMLA RAJA GIRLS P.G. AUTO. COLLEGE, GWALIOR (M.P.) INDIA
(Affiliated to Jiwaji University, Gwalior under 2(f) & 12(b) NAAC – 'A' Grade Accredited Institute)
www.krgcgwalior.org krgc@rediffmail.com Phone: 0751- 2625495, 0751-2438173

| | | | | |
|-----|---|--|-----------------------|---|
| | Prodhaugiky Samaj, Sanskriti aur Mahila Sashaktikaran | Sashaktikaran aur Media ki Bhumika | 710-5 | Kushwah & Dr.Nisha Mishra |
| 20. | Suchana Prodhaugiky Samaj, Sanskriti aur Mahila Sashaktikaran | Sanskritik Virasat 'Sangeet' par Navin Praudyogiki ka Prabhaw | 978-81-8129- 710-5 | Kumari Bhagyashri Sahstrabuddhe |
| 21. | Suchana Prodhaugiky Samaj, Sanskriti aur Mahila Sashaktikaran | Impact of Globalization on Indian Economy with Special Reference to Import and Export | 978-81-8129- 710-5 | Surbhi Tiwari Dr.H.K. Agarwal Dr.Neeru Gupta |
| 22. | Suchana Prodhaugiky Samaj, Sanskriti aur Mahila Sashaktikaran | Sanskrit ke Adhyayan Evam Adhyapan mein Suchna Praudyogiki ki Bhumika Krishna Jain | 978-81-8129- 710-5 | Dr. Krishna Jain |
| 23. | Suchana Prodhaugiky Samaj, Sanskriti aur Mahila Sashaktikaran | Mahila Sashaktikaran va Uski Chunaution | 978-81-8129- 710-5 | Dr. Manju Chauradia |
| 24. | Suchana Prodhaugiky Samaj, Sanskriti aur Mahila | Mahila Sashaktikaran ke Karan Evam Prabhav | 978-81-8129- 710-5 | Dr. Meena Shrivastav |



कार्यालय प्राचार्य, शासकीय कमलाराजा कन्या स्नातकोत्तर स्वशासी महाविद्यालय, ग्वालियर
GOVT. KAMLA RAJA GIRLS P.G. AUTO. COLLEGE, GWALIOR (M.P.) INDIA
(Affiliated to Jiwaji University, Gwalior under 2(f) & 12(b) NAAC – 'A' Grade Accredited Institute)
www.krgcgwalior.org krgc@rediffmail.com Phone: 0751- 2625495, 0751-2438173

| | | | | |
|-----|---|--|-----------------------|--|
| | Sashaktikaran | | | |
| 25. | Suchana Prodhaugiky Samaj, Sanskriti aur Mahila Sashaktikaran | Gramin Mahilaon ke Aarthik Sashaktikaran ke Naye Aayam | 978-81-8129- 710-5 | Dr. Nisha Mishra |
| 26. | Suchana Prodhaugiky Samaj, Sanskriti aur Mahila Sashaktikaran | Mahila Sashaktikaran Sarkaari Prayas Evam Chunautiyan | 978-81-8129- 710-5 | Dr. Saroj Modi Dr. Archana Kushwah |
| 27. | Suchana Prodhaugiky Samaj, Sanskriti aur Mahila Sashaktikaran | Bhartiya Sanskriti ke Ang Sangeet Par Aadhunik Sanchar Sadhano ka Prabhav | 978-81-8129- 710-5 | Dr. Smita Shastrabuddhe |
| 28. | Contemporary Indian Writing: A Source of Cultural Strengthening | Sanskrit Sahitya ke Abhinav Rachnadharmi Lekhak Acharya Radhavallabh Tripathi aur unka Abhinavkavyalankarsutram | 978-93- 84277-20-8 | Dr. Asha Singh Rawat |
| 29. | indian political thought | jinnah in search of political power | 978-93-325- 8733-5 | Dr. Dinesh Kumar Singh |
| 30. | mehfil-e-fankaar | suhail sakshiyat | | Dr. Waseem Iftekhhar Ansari |
| 31. | baligh nazar nasr nigar | nagpur ka muslim mashra: Azadi ke baad | | Dr. Waseem Iftekhhar Ansari |



| | | | | |
|-----|---|--|------------------------|---------------------------|
| 32. | Significance of Archaeology in Social Sciences | Puratatv Kala Vaibhav ki Anmol Dharohar Bavangaja | 978-93-5291-609-2 | Dr. Jaya Jain |
| 33. | Significance of Archeology in Social sciences | Sangmarmar mein Dhali Kavita-Swamibagh ki Nirmandheeyn Samadhi | 978-93-5291-609-2 | Dr. Kumkum Mathur |
| 34. | Chapter Making of modern India 2018 page 152-164 110/90/17 | Chhattisgarh ke Rashtriya Andolan ke Preneta: Gangshyam Singh Gupt | 978-81-922830-0-5 | Dr. Madhubala Kulshrestha |
| 35. | Making of Modern India | Aazadi se purv Janjagran mein Gwaliro Riyasat ke Samachar Patra 'Jayaji Pratap' ki Bhumika | 978-81-922830-0-5 | Dr. Meena Shrivastav |
| 36 | Indian Political Thought and Thinners (ed.) by Hlmanshu Roy and M.P Singh | M.N. Roy Twentieth century renaissance | 978-93-325-8733-5 | Dr. Dinesh Kumar Singh |
| 37. | State Politics In India (ed.) by Himanshu Roy and M.P.Singh | Understanding State Politics in India: A Case of Bihar | ISBN-978-93-84092-99-3 | Dr. Dinesh Kumar Singh |

Participation in workshops/ Seminars/ conferences (national/ international)

| | |
|---------------------------------|-----------|
| International Conference | 20 |
| International Seminar | 28 |



| | |
|---------------------|----|
| National Conference | 98 |
| National Seminar | 94 |
| State Workshop | 10 |
| State Seminar | 6 |

Paper Presentation:

| Sr No. | Name | Title of the paper presented | Title of Conference / Seminar | Organized by | Conference Level |
|--------|---------------|---|--|---|------------------|
| 01 | Dr. Jaya Jain | Gwalior Durg ke Urwai samoooh ki Jeern Sheern Jain Pura sampada | Significance of archeology in social sciences | Jiwaji University Gwalior | National |
| 02 | Dr. Jaya Jain | Rashtrawad me santan ki bhoomika | Rashtravad ki sankalpana aur uske vividh paridrashya | Kendriya hindi sansthan Agra and madhav college Gwalior | International |
| 03 | Dr. Jaya Jain | Jain Pooja Vidhan ke prateek | Contribution of folk traditions to Indian culture | Jiwaji University Gwalior | National |
| 04 | Dr. Jaya Jain | Rashtra Sarvoparita avam Dharm | Multiple dimensions on nationalism in post independent india | Central Indian historical research Foundation | National |



कार्यालय प्राचार्य, शासकीय कमलाराजा कन्या स्नातकोत्तर स्वशासी महाविद्यालय, ग्वालियर
GOVT. KAMLA RAJA GIRLS P.G. AUTO. COLLEGE, GWALIOR (M.P.) INDIA
(Affiliated to Jiwaji University, Gwalior under 2(f) & 12(b) NAAC – 'A' Grade Accredited Institute)
www.krgcgwalior.org krgc@rediffmail.com Phone: 0751- 2625495, 0751-2438173

| | | | | | |
|----|-------------------|---|---|--|---------------|
| 05 | Dr. Jaya Jain | Digambar parampara ke sanrakshaka charitra chakravarti acharya shanty sagar maharaj ji | Socio-Religious movements in 20th century India | Central Indian historical research foundation Gwalior | National |
| 06 | Dr. Jaya Jain | Sanskar Bharti Gwalior Dwara Gaalav Sambhagar | Sahitya, Rangmanch evam Kalaon ko Samarpit Akhil Bhartiya Sanstha | Jiwaji University Gwalior | National |
| 07 | Dr. Kumkum Mathur | Rastravaad se pariplot chitrakar laxman pay ka vyaktitva avam kratitva | Rashtravaad ki sankalpana aur uske vividh paridrasya | Kendriya Hindi Sansthan Agra and Madhav College Gwalior | International |
| 08 | Dr. Kumkum Mathur | Participated in the 24 th national art Exhibition held at kala vithika Gwalior | Mukund sakharam Bhand smruti utsav | Swatantrata senani | National |
| 09 | Dr. Kumkum Mathur | Purva madhyakaleen kailash guha mandir me pauranik shiv kathao ka silpankan | History culture and archeology in Medieval India | Vidhya Career Research Foundation Panna (MP) and Central India | National |



| | | | | | |
|----|-------------------|---|---|---|----------|
| | | | | Journal of Historical & Archeological Research and (MPIP) | |
| 10 | Dr. Kumkum Mathur | Bhartiya Paramparik Dharohar ko Sanjot Shilpkar “Govind Singh Nagvanshi” | Contribution of folk traditions to Indian culture | Jiwaji University Gwalior | National |
| 11 | Dr. Kumkum Mathur | 20 th sadi ke antar rastriya khyaati chitrakar Maqbool-Fida- Hussain | Socio religious movement in 20 th Cent. In india | Central Indian historical research foundation Gwalior | National |
| 12 | Dr. Meera Mittal | | Emerging Issues in commerce, Management IT and education | MPS Group of college Gwalior | National |
| 13 | Dr. Meera Mittal | Psychology of Consumer Marketing and | Significance of behavioral approach to decision making in economics and business management in Indian economy | Jiwaji University, Gwalior | National |



कार्यालय प्राचार्य, शासकीय कमलाराजा कन्या स्नातकोत्तर स्वशासी महाविद्यालय, ग्वालियर
GOVT. KAMLA RAJA GIRLS P.G. AUTO. COLLEGE, GWALIOR (M.P.) INDIA
(Affiliated to Jiwaji University, Gwalior under 2(f) & 12(b) NAAC – 'A' Grade Accredited Institute)
www.krgcgwalior.org krgc@rediffmail.com Phone: 0751- 2625495, 0751-2438173

| | | | | | |
|----|------------------|---|--|---|----------|
| 14 | Dr. Anju Yadav | Demoelization of Indian rupee | Emerging issues in commerce management IT and education | Indian accounting association Gwalior | National |
| 15 | Dr. Anju Yadav | Aspects of Rational behavior in decision making | Significance of behavioral approach to decision making in Economics and business management in India economy | SOS Jiwaji University Gwalior | National |
| 16 | Dr. Anju Yadav | Gandhi's views on Indian economy | Socio- religious movements in 20 th century India | Central Indian historical research foundation Gwalior | National |
| 17 | Dr. Nisha Mishra | Cash to cashless economy issue and opportunities in India | Emerging issues in commerce management it and education | M P S Group of collage Gwalior | National |
| 18 | Dr. Nisha Mishra | Purchasing behavior of government employees towards shopping in traditional market and online | Significance of behavioral approach to Decision Making in economics and business Management in | SOS in Economics jiwaji university Gwalior | National |



कार्यालय प्राचार्य, शासकीय कमलाराजा कन्या स्नातकोत्तर स्वशासी महाविद्यालय, ग्वालियर
GOVT. KAMLA RAJA GIRLS P.G. AUTO. COLLEGE, GWALIOR (M.P.) INDIA
(Affiliated to Jiwaji University, Gwalior under 2(f) & 12(b) NAAC – 'A' Grade Accredited Institute)
www.krgcgwalior.org krgc@rediffmail.com Phone: 0751- 2625495, 0751-2438173

| | | | | | |
|----|-------------------|--|---|--|---------------|
| | | | India Economy | | |
| 19 | Dr. Nisha Mishra | Women empowerment movements in 20 th century in India | Socio religious movements in 20 th century India | Central Indian Historical research foundation Gwalior | National |
| 20 | Dr. Archana Dubey | Bharat Abhyuday: Ek Vishleshan | Rejuvenating Bharat: Research for Resurgence | Bharatiya shikshan mandal avam mahatma Gandhi college of law | National |
| 21 | Dr. Archana Dubey | GST Ke prabhav evam dushprabhav ek Adhyayan | Emerging Issues in commerce, management, IT and education | Indian accounting association, Gwalior | National |
| 22 | Dr. Archana Dubey | Rashtrawad ki Avdharna: Ek Vishleshan | Rashtrawad ki Sankalpana aur uske vividh paridhraya | Kendriya Hindi Sansthaan, Agra evam Madhav College Gwalior | International |
| 23 | Dr. Archana Dubey | Psychology and behavioural economics | Significance of behavioral approach to decision making in economics and | Jiwaji University Gwalior | National |



| | | | | | |
|----|----------------------------------|---|---|--|-----------------------------|
| | | | business management in Indian economy | | |
| 24 | Dr. Preeti Bala Shrivastav | Theme of immigration is the novels of Anita Desai | Recent advances in languages, Literature and Social Science | Center for humanities and cultural studies Kalyan dist Thane | International conference |
| 25 | Dr. Preeti Bala | Contribution of Charusheel Singh in | Sanskritik rashtrawad aur | Rani Durgawati University | International |
| 26 | Dr. Preeti Bala Shrivastav | Philosophical Dimensions in the poetry of Charusheel Singh | Contemporary Indian Writing: A Source of Cultural Strengthening | Govt. Maharaj Acharya Sanskrit College, Jaipur | National |
| 27 | Dr. Preeti Bala Shrivastav | Performance Management: A tool for Employee development | New Age Economic reforms in India: Issues & Challenges | BVM College of Management Education, Gwalior | National |
| 28 | Dr. Abha Varshney | Paryavaran Sanrakshan: Rashtrawad ka anivarya ghatak | Rashtrawad ki Sankalpana aur uske vividh paridhraya | Kendriya Hindi Sansthaan, Agra evam Madhav College Gwalior | International |



कार्यालय प्राचार्य, शासकीय कमलाराजा कन्या स्नातकोत्तर स्वशासी महाविद्यालय, ग्वालियर
GOVT. KAMLA RAJA GIRLS P.G. AUTO. COLLEGE, GWALIOR (M.P.) INDIA
(Affiliated to Jiwaji University, Gwalior under 2(f) & 12(b) NAAC – 'A' Grade Accredited Institute)
www.krgcgwalior.org krgc@rediffmail.com Phone: 0751- 2625495, 0751-2438173

| | | | | | |
|----|-------------------|--|---|---|---------------|
| 29 | Dr. Abha Varshney | Vaigyanik aur Takniki vikaas ka paryavaran par prabhav | Science technology and society | Indian social science asso. And madhyanchal sociological society indore christian college, Indore | International |
| 30 | Dr. Abha Varshney | Rashtra Nirmaan mein Shikshak ki Bhumika | Parivartit Samaaj mein Adhyapak Shiksha | Bhartiya Vidhya Mandir College of Management Education Gwalior evam Shiksha Sanskriti Uthaan Nyas , New Delhi | National |
| 31 | Dr. Abha Varshney | Paryavaran ki Shiksha | Charitra Nirmaan evam vyaktitv ka Samagra vikaas | Shri Swamiji Maharaj College Education and Sciences Datia MP | National |
| 32 | Dr. Abha Varshney | Paryavaran Sanrakshan mein Harit Takniki ka prabhav | Emerging issues in commerce management IT and Education | Indian accounting association, gwalior branch in asso. With MPS group of | National |



कार्यालय प्राचार्य, शासकीय कमलाराजा कन्या स्नातकोत्तर स्वशासी महाविद्यालय, ग्वालियर
GOVT. KAMLA RAJA GIRLS P.G. AUTO. COLLEGE, GWALIOR (M.P.) INDIA

(Affiliated to Jiwaji University, Gwalior under 2(f) & 12(b) NAAC – 'A' Grade Accredited Institute)

www.krgcgwalior.org krgc@rediffmail.com Phone: 0751- 2625495, 0751-2438173

| | | | | | |
|----|----------------------------|--|--|---|----------|
| | | | | college, Gwalior | |
| 33 | Dr. Abha Varshney | 20 th Shatabdi me Bharat me Paryavaran-Sanrakshan Sambandhi Andolan : Ek Vishleshan | Socio- Religious Movements in 20 th Century India | Central Indian Historical Research foundation Gwalior | National |
| 34 | Dr. Shailendra singh Tomar | Women and Development | The Emerging Contours of Centre-State Fiscal Relations in India and Dynamics of Migration in UP & Uttrakhand | UP- Uttarakhand Economics Association (UPUEA) | National |
| 35 | Dr. Shailendra singh Tomar | Gwalior evam Chambal Sambhag mein Paryatan ki Samnbhavnaye | Vindhya Pradesh mein Paryatan ki Sambhavnaye evam chunotiya | Govt. Thakur Ranmat Singh College, Rewa MP | National |



| | | | | | |
|----|----------------------------|---|---|---|---------------|
| 36 | Dr. Shailendra Singh Tomar | Green technologies in India | Emerging issues in Commerce, Management, IT AND Education | M.P.S Group of college Gwalior | National |
| 37 | Dr. Shailendra Singh Tomar | 20 th Century mein Paryavaran sanrakshan Sambandhi Andolan Ek Vishleshan | Socio- Religious Movements In 20 th Century India | Central Indian Historical Research Foundation Gwalior | National |
| 38 | Dr. Shailendra Singh Tomar | Jalvaayu Parivartan evam Uska Prabhav | Environmental Changes in South and South-East Asia Challenges and Prospects | Pt. Ravishankar Shukla University Raipur (C.G.).India | International |
| 39 | Dr. Shailendra Singh Tomar | Swatantrata Sangram mein Morena Jile ka yogdaan | Rashtrawad ki Sankalpana aur Uske Vividh Paridrishya | Kendriya Hindi Sansthan Agra and Madhav college Gwalior | International |
| 40 | Dr. Shailendra Singh Tomar | Paryavaran Sanrakshan mein Bhogolik Suchna Tantra ka upyog | Science Technology and Society | Indore Christian college, Indore | International |
| 41 | Dr. Shailendra Singh | Bharat mein Krantikari Andolan Ek Anusheelan | Socio-Religious Movements in 20 th Century India | Central Indian Historical Research | National |



कार्यालय प्राचार्य, शासकीय कमलाराजा कन्या स्नातकोत्तर स्वशासी महाविद्यालय, ग्वालियर
GOVT. KAMLA RAJA GIRLS P.G. AUTO. COLLEGE, GWALIOR (M.P.) INDIA
(Affiliated to Jiwaji University, Gwalior under 2(f) & 12(b) NAAC – 'A' Grade Accredited Institute)
www.krgcgwalior.org krgc@rediffmail.com Phone: 0751- 2625495, 0751-2438173

| | | | | | |
|----|-------------------------------------|--|---|--|----------|
| | Tomar | | | Foundation, Gwalior | |
| 42 | Dr. Shailendra singh Tomar | Ground water use in urban area prospective of mega cities | “Future Groundwater Crisis in India: Emerging Issues and Challenges | Govt. College Jatauli Haily Mandi Gurugram and Department of Higher Education | National |
| 43 | Dr. Shailendra singh Tomar | Mahila Shiksha evam Samajik Vikas | Parivartit Samaj me Adhyapak Shiksha | Bhartiya Vidhya Mandir College of Management Education, Gwalior | National |
| 44 | Dr. Shailendra singh Tomar | Paryavaran ki Shiksha | Charitra Nirmaan avam Vyaktitv ka Samagra Vikaas | Shri Swamiji Maharaj College Education and Sciences, Datia and Shiksha Sanskriti Uthhan Nyas, New Delhi | National |
| 45 | Dr. Shailendra singh Tomar | Vindhya Pradesh mein paryatan ki Sambhavnaye | Vindhya Pradesh mein paryatan ki Sambhavnaye evam Chunotiya | Govt. Thakur Ranmat Singh College Rewa, MP | National |



कार्यालय प्राचार्य, शासकीय कमलाराजा कन्या स्नातकोत्तर स्वशासी महाविद्यालय, ग्वालियर
GOVT. KAMLA RAJA GIRLS P.G. AUTO. COLLEGE, GWALIOR (M.P.) INDIA
(Affiliated to Jiwaji University, Gwalior under 2(f) & 12(b) NAAC – 'A' Grade Accredited Institute)
www.krgcgwalior.org krgc@rediffmail.com Phone: 0751- 2625495, 0751-2438173

| | | | | | |
|----|-----------------|--|--|---|---------------|
| 46 | Dr. Abha Mishra | Rashtrawadi Chetna aur Hindi Sahitya | Rashtrawad ki Sankalpana aur Uske Vividh Paridrishya | Kendriya Hindi Sansthan Agra and Madhav College Gwalior | International |
| 47 | Dr. Abha Mishra | Mahila Lekhan aur Stree Vimarsh | Hindi Sahitya mein Naari: Bhoomika aur Lekhan | Social Research Foundation Gwalior | National |
| 48 | Dr. Abha Mishra | Uttar Madhya Kaal me Shah Abru ki Shayri me Deshaj Shabd | Shah Mubarak Abru art and Personality | Adarsh Samaj Sewa Shiksha Samiti Gwalior MP | National |
| 49 | Dr. Abha Mishra | Vyaktitva Vikaas evam Mulya | Parivartit samaaj mein Adhyapak Shiksha | BVM College of Management Gwalior and Shiksha Sanskriti Uthhan Nyas New Delhi | National |
| 50 | Dr. Abha Mishra | Hindi Kavita me Bhartiyata | Sahitya mein Bharat bodh | Babasaheb Bheemrao Ambedkar University, Lucknow | National |



कार्यालय प्राचार्य, शासकीय कमलाराजा कन्या स्नातकोत्तर स्वशासी महाविद्यालय, ग्वालियर
GOVT. KAMLA RAJA GIRLS P.G. AUTO. COLLEGE, GWALIOR (M.P.) INDIA
(Affiliated to Jiwaji University, Gwalior under 2(f) & 12(b) NAAC – 'A' Grade Accredited Institute)
www.krgcgwalior.org krgc@rediffmail.com Phone: 0751- 2625495, 0751-2438173

| | | | | | |
|----|------------------------|---|---|--|----------|
| 51 | Dr. Abha Mishra | 20 th sadi ke sahityik Andolan | Socio Religious Movements In 20 th Century India | Madhya Bhartiya Itihaas Anusandhan Pratishthan Gwalior | National |
| 52 | Dr. Abha Mishra | Pravasi Hindi Sahitya mein Bhartiyata | Pravasi Hindi Sahitya: Dasha avam Disha | Dr. Bheemrao Aambedkar University, Agra | National |
| 53 | Dr. Abha Mishra | 21 st Century mein Hindi Patrakarita ka Swaroop | Hindi Patrakarita: Swaadin Chetna aur Yugbodh | Lucknow University | National |
| 54 | Dr. Abha Mishra | Manav Suraksha ki Chunotiyen | Human Security in India: Challenges and Opportunities | Mahatma Gandhi Kashi Vidyapith, Varanasi | National |
| 55 | Dr. Kalpana Sharma | | Bhartiya Darshan evam Purusharth Vyawastha | Darshan Parishad (MP or Chhattisgarh) | National |
| 56 | Madhu bala Kulshrestha | Chhattisgarh ke Rashtriya Andolan ke pradeta Ghanshyam Singh Gupt | Making of modern India | Shodhak Jaipur | National |
| 57 | Madhu bala Kulshrestha | Gurjar Utpatti Sambandhi Vibhinna Avdharnaaye: Ek | Itihaas mein Gurjar Samaj: Punaravlokan | Prithviraj Chauhan Atihasik evam | National |



कार्यालय प्राचार्य, शासकीय कमलाराजा कन्या स्नातकोत्तर स्वशासी महाविद्यालय, ग्वालियर
GOVT. KAMLA RAJA GIRLS P.G. AUTO. COLLEGE, GWALIOR (M.P.) INDIA
(Affiliated to Jiwaji University, Gwalior under 2(f) & 12(b) NAAC – 'A' Grade Accredited Institute)
www.krgcgwalior.org krgc@rediffmail.com Phone: 0751- 2625495, 0751-2438173

| | | | | | |
|----|------------------------|--|---|--|----------|
| | | Adhyayan | | Sanskrit Shodh Kendra Maharshi Dayanand Saraswati University Ajmer (Rajasthan) | |
| 58 | Madhu bala Kulshrestha | Scindia Rajao ke Gwalior Kila Taksaal se Jaari Chaandi ke Sikke: Ek Adhyayan | History, Culture & Archeological in Medieval India | Vidhya Carrier Research Foundation Panna MP and Under auspices of Madhya Pradesh Itihas Parishad | National |
| 59 | Dr. Brajesh kumar | Prachin Kaal mein Mahilayo ki Sthiti | Parivartit Samaaj mein Adhyapak Shiksha | BVM COLLEGE OF MANAGEMEN T EDUCATION GWALIOR | National |
| 60 | Dr. Brajesh kumar | Madhya Pradesh mein Paryatan ki Samasyaye evam Sambhavnaye | Vindhya Pradesh mein Paryatan ki Sambhavna evam Chunotiya | Govt. Thakur Ranmat Singh College Rewa | National |
| 61 | Dr. Brajesh kumar | Paryavaran ki Shiksha | Charitra Nirmaan evam Vyaktitv ka Samagra Vikaas | Shri Swamiji Maharj College Education and | National |



कार्यालय प्राचार्य, शासकीय कमलाराजा कन्या स्नातकोत्तर स्वशासी महाविद्यालय, ग्वालियर
GOVT. KAMLA RAJA GIRLS P.G. AUTO. COLLEGE, GWALIOR (M.P.) INDIA
(Affiliated to Jiwaji University, Gwalior under 2(f) & 12(b) NAAC – 'A' Grade Accredited Institute)
www.krgcgwalior.org krgc@rediffmail.com Phone: 0751- 2625495, 0751-2438173

| | | | | | |
|----|-------------------------|---|--|--|--------------------------|
| | | | | Sciences Datia | |
| 62 | Dr. Brajesh kumar | | Contribution fog tradition to Indian culture | JIWAJI UNIVERCITY GWALIOR | National |
| 63 | Dr. Brajesh kumar | | SOCIO RELIGIOS IN 20 CENTURY INDIA | Central Indian historical research foundation Gwalior | |
| 64 | Dr. Smita Sahasrabud he | Bhartiya Sangeet ka Sankraman kaal Shailigat parivartan ke sandharbh mein | Vividhkaal mein Kalaa ka Swaroop | R.M.T. Uni. Cultural Dept. M.P. | International |
| 65 | Dr. Jyotsana Rana | Gwalior parampara mai Sangit | Streams of Music: Note, Poetry & Meditation | Banasthali Vidhyapeeth, dept. of Performing Arts, Faculty of Fine Arts | International Conference |
| 66 | Dr. Swapna Marathe | Thumri Gayaki evam Parampara | Streams of Music: Note, Poetry & Meditation | Banasthali Vidhyapeeth, dept. of Performing Arts, Faculty of Fine Arts | International Conference |
| 67 | Dr. Anoop | Upshastriya sangeet | Sangeet Pravah: | Bansthali | International |



कार्यालय प्राचार्य, शासकीय कमलाराजा कन्या स्नातकोत्तर स्वशासी महाविद्यालय, ग्वालियर
GOVT. KAMLA RAJA GIRLS P.G. AUTO. COLLEGE, GWALIOR (M.P.) INDIA
(Affiliated to Jiwaji University, Gwalior under 2(f) & 12(b) NAAC – 'A' Grade Accredited Institute)
www.krgcgwalior.org krgc@rediffmail.com Phone: 0751- 2625495, 0751-2438173

| | Moghe | ki Vidhyaye- Thumri Dadra Tappa | Svar kavya aur Chintan | Vidhyapeeth | Conference |
|----|------------------|--|---|---|---------------|
| 68 | Dr. Anupam Gupta | Changing dimensions of Indian foreign Policy | India's Foreign Policy Nehru to Modi | Jiwaji University Gwalior | National |
| 69 | Dr. Anupam Gupta | Kautilya ki Dand Vyavastha | Indian Vision of Political Thinking: possibility of Global alternatives | IPSA | International |
| 70 | Dr. Anupam Gupta | Purusharth Chatushtaya | Bhartiya Darshan Parishad evam Purusharth vyavastha | Darshan Parishad (MP and Chhattisgarh) | National |
| 71 | Dr. Anupam Gupta | Reforms required in higher education | Reforms in Higher Education: challenges & opportunities | AIFUCTO and Savitribai Phule University, Pune | National |
| 72 | Dr. Anupam Gupta | Women Security and Government Agencies | Disability, poverty and Human security in India | Jiwaji University Gwalior | National |
| 73 | Dr. Anupam Gupta | Samkaalin Paristhithiyo mein Rashtrawad | Vartmaan Rashtriya Paridhrishya | Govt. College Barela and Rani Durgawati | National |



कार्यालय प्राचार्य, शासकीय कमलाराजा कन्या स्नातकोत्तर स्वशासी महाविद्यालय, ग्वालियर
GOVT. KAMLA RAJA GIRLS P.G. AUTO. COLLEGE, GWALIOR (M.P.) INDIA
(Affiliated to Jiwaji University, Gwalior under 2(f) & 12(b) NAAC – 'A' Grade Accredited Institute)
www.krgcgwalior.org krgc@rediffmail.com Phone: 0751- 2625495, 0751-2438173

| | | | | | |
|----|-----------------------|--|--|---|----------|
| | | | | University, Jabalpur | |
| 74 | Dr. Kavita Agrawal | Vartmaan Paripekshya mein Bharat China Sambandh (PM Modi ki china Yatra ke Sambandh mein) | India's Foreign Policy Nehru to Modi | Jiwaji University Gwalior MP | National |
| 75 | Dr. Kavita Agrawal | Women security and its relation with poverty | Disability, poverty and Human security in India | Jiwaji University Gwalior | National |
| 76 | Dr. Kavita Agrawal | Bharat ke Samajik Aarthik evam vanijya swaroop par vartmaan prime minister ka prabhav | Vartmaan Rashtriya Paridrishya | Govt. College Barela and Rani Durgawati University , Jabalpur | National |
| 77 | Dr. Sudha Singh | Poverty in India its causes and remedies | Disability,poverty and Human security in India | Jiwaji University Gwalior | National |
| 78 | Dr. Sudha Singh | India's Foreign Policy During the period of Narendra Modi | India's Foreign Policy Nehru to Modi | Jiwaji University Gwalior | National |



कार्यालय प्राचार्य, शासकीय कमलाराजा कन्या स्नातकोत्तर स्वशासी महाविद्यालय, ग्वालियर
GOVT. KAMLA RAJA GIRLS P.G. AUTO. COLLEGE, GWALIOR (M.P.) INDIA
(Affiliated to Jiwaji University, Gwalior under 2(f) & 12(b) NAAC – 'A' Grade Accredited Institute)
www.krgcgwalior.org krgc@rediffmail.com Phone: 0751- 2625495, 0751-2438173

| | | | | | |
|----|---------------------|---|--|--|---------------|
| 79 | Dr. Krishna Jain | Mahaveer Charitra mein Rajnaitik Tatv | Bhavbhooti Samaroh 2018 | Jiwaji Unievrsity Gwalior | National |
| 80 | Dr. Krishna Jain | Janki Jeewanam Mahakavya mein Rashtriya Sankalpana ke Vividh Paridhrashya | Rashtrawad ki Parikalpana aur uske Vividh Paridhrashya | Kendriya hindi Sansthan Agra aur Madhav College Gwalior | International |
| 81 | Dr Asha Singh Rawat | Purano mein Rashtrawad ki sankalpana aur uske Vividh paridhrashya | Rashtrawad ki Parikalpana aur uske Vividh Paridhrashya | Kendriya Hindi Sansthan, Agra and Madhav College Gwalior | International |
| 82 | Dr Asha Singh Rawat | Mahavir Charitam mein Jeewan Mulya | Akhil Bhartiya Bhavbhooti Samaroh | Kaalidas Sanskrit Akademi Ujjain | National |
| 83 | Dr Asha Singh Rawat | Vishakh Dutt krat mudrarakshasam ka Naatyashastriya Vivechan | Bhartiya Naatyashastrya avam vartmaan Drishyakavy | Raajkiya Maharaj Acharya Sanskrit College, Jaipur | National |
| 84 | Dr Asha Singh Rawat | Mahakavi Kalidas ke Raghuvansham Mahakavya me Jeewan mulya | Sanskrit Sahitye mulya Tatv Vimarshah | Jagadguru Ramanandachar ya Rajasthan Sanskrit University | National |



कार्यालय प्राचार्य, शासकीय कमलाराजा कन्या स्नातकोत्तर स्वशासी महाविद्यालय, ग्वालियर
GOVT. KAMLA RAJA GIRLS P.G. AUTO. COLLEGE, GWALIOR (M.P.) INDIA
(Affiliated to Jiwaji University, Gwalior under 2(f) & 12(b) NAAC – 'A' Grade Accredited Institute)
www.krgcgwalior.org krgc@rediffmail.com Phone: 0751- 2625495, 0751-2438173

| | | | | | |
|----|----------------------|--|---|--|---------------|
| | | | | Jaipur | |
| 85 | Dr. Asha Singh Rawat | Aadhunik Sanskrit Rachnadharmi Prof. Hariram Acharya aur unki Sanskrit rachnaye | Contemporary Indian Writing: A Source of Cultural Strengthening | Govt. Maharaj Acharya Sanskrit College, Jaipur | National |
| 86 | Dr. Neeru Gupta | Yuvayo mein Nashe ki Samasya evam Samadhan | Bhartiya Samajik Mulya evam Yuva | Sambhagiya and District Ikai Sagar | National |
| 87 | Dr. Neeru Gupta | Study of social and economic balancing of working women (Special reference to doctors) | Emerging issues in commerce, management, IT and education | MPS group of colleges Gwalior | National |
| 88 | Dr. Archana Kushwah | Vighyaan Takniki evam Samaaj | Science technology and society | Indore Christian college Indore | International |
| 89 | Dr. A.K. Gupta | Vigyaapan ka Upbhokt ke Kraya Nirnay par Prabhav | Significance of behavioral approach to decision making in economics and business management in Indian economy | Jiwaji University Gwalior | National |



| | | | | | |
|----|------------------|--|---|------------------------------------|----------|
| 90 | Dr. H.K. Agrawal | Changing Perception of Student through Extracurricular Activities by Professional Institutions | Emerging issues in commerce, management, IT and Education | MPS Group of Management, Gwalior | National |
| 91 | Dr. H.K. Agrawal | Session Chaired | New age economic reform in India issue | BVM College of Management ,Gwalior | National |
| 92 | Dr. H.K. Agrawal | Session Chaired | Contemporary practices for excellence in | Dream valley college, Gwalior | National |
| 93 | Dr. V.K. Agrawal | cash to cashless economy challenges and opportunities | Emerging issues in commerce, management IT and education | M.P.S. group of college Gwalior | National |
| 94 | Dr. Manju Dubey | Madhyam Vargiya Parivaro par GST ka prabhav | India's foreign policy Nehru to Modi | Jiwaji University, Gwalior | National |
| 95 | Dr. Manju Dubey | Upbhokta Vyavhaar cki Samasyaye evam Samadhan | Significance of behavioral approach to decision making in economics and business management in Indian economy | Jiwaji University, Gwalior | National |



कार्यालय प्राचार्य, शासकीय कमलाराजा कन्या स्नातकोत्तर स्वशासी महाविद्यालय, ग्वालियर
GOVT. KAMLA RAJA GIRLS P.G. AUTO. COLLEGE, GWALIOR (M.P.) INDIA

(Affiliated to Jiwaji University, Gwalior under 2(f) & 12(b) NAAC – 'A' Grade Accredited Institute)

www.krgcgwalior.org krgc@rediffmail.com Phone: 0751- 2625495, 0751-2438173

| | | | | | |
|----|------------------|--|--|--|---------------|
| 96 | Dr. Manju Dubey | Parivatit Samaaj me Adhyapako ki Bhumika | Parivartit Samaaj me Adhyapak Shiksha | Bhartiya Vidhya Mandir College of Management Education, Gwalior and Shiksha Sanskriti Utthan Nyas, New Delhi | National |
| 97 | Dr. Manju Dubey | Vindhya Pradesh me Paryatan ka Aanand | Vindhya Pradesh me Paryatan ki Sambhavnaye avam Chunotiya | Govt. Thakur Ranmat Singh College Reewa MP | National |
| 98 | Dr. Charu Katare | Diabetes A Dietary Approach | Symposium on Integrated Approach for Management of Diabetes Mellitus | Jiwaji University, Gwalior | National |
| 99 | Dr. Charu Katare | Effect of Employee Empowerment on Job Satisfaction | Measure ,Manage and Facilitate Change to Harness Organizational | Prestige Institute of Management, Gwalior | International |



कार्यालय प्राचार्य, शासकीय कमलाराजा कन्या स्नातकोत्तर स्वशासी महाविद्यालय, ग्वालियर
GOVT. KAMLA RAJA GIRLS P.G. AUTO. COLLEGE, GWALIOR (M.P.) INDIA
(Affiliated to Jiwaji University, Gwalior under 2(f) & 12(b) NAAC – 'A' Grade Accredited Institute)
www.krgcgwalior.org krgc@rediffmail.com Phone: 0751- 2625495, 0751-2438173

| | | | Potential | | |
|-----|------------------------|---|---|---|---------------|
| 100 | Dr. Charu Katare | Millets : The Nutritious and Eco-Friendly Crop | Aupniveshak Bharat aur bhartiya Pratikar | Amity University Gwalior | International |
| 101 | Dr. Charu Katare | Behavioral Approach and Human Resource Management | Significance of Behavioral Approach to Decision Making in Economics and Business Management in Indian Economy | Jiwaji University, Gwalior | National |
| 102 | Dr. Charu Katare | Millets the nutritious and eco friendly food crop | 9 th international Congress of environmental research | Amity University Gwalior | International |
| 103 | Dr. Preeti Kulshrestha | Traditional Knowledge of medicinal Plants for the treatment of respirators diseases in Gwalior district of Madhya Pradesh | 4 th international Virstula Conference | International Science comely Association | International |
| 104 | Dr. Preeti Kulshrestha | Medicinal plants used for treatment of skin disease in | 9 th international Conges of environment | Amity University Gwalior | International |



कार्यालय प्राचार्य, शासकीय कमलाराजा कन्या स्नातकोत्तर स्वशासी महाविद्यालय, ग्वालियर
GOVT. KAMLA RAJA GIRLS P.G. AUTO. COLLEGE, GWALIOR (M.P.) INDIA

(Affiliated to Jiwaji University, Gwalior under 2(f) & 12(b) NAAC – 'A' Grade Accredited Institute)

www.krgcgwalior.org krgc@rediffmail.com Phone: 0751- 2625495, 0751-2438173

| | | | | | |
|-----|---------------------------|---|--|--|---------------|
| | | In Gwalior district , Madhya Pradesh India | research | | |
| 105 | Dr. Preeti Kulshrestha | Ethno botanical Knowledge of oval communities in Gwalior district of Madhya Pradesh, India Basis for Biodiversity conservation | 4 th international conference on environment and ecology | Gouhati uni guwahti | International |
| 106 | Dr. Preeti Kulshrestha | Importance of plants in Alternative Medicin : A review | Advances in chemical sciences allied fields of Science Health education& Environment | Career Collage Bhopal | International |
| 107 | Dr. Vinita Agrawal | A report on Plants used as medicines in our daily life | Study of Nanomaterials & Scientific development in 21 st century (ICSNSDC) | Jiwaji University & Academy of Microscope Science & Technology India | International |
| 108 | Dr. Vinita Agrawal | Benefits of naturopathy -Home Remedies | International Conference on Recent Trends in chemical Science | SOS Chemistry Jiwaji University Gwalior | International |



कार्यालय प्राचार्य, शासकीय कमलाराजा कन्या स्नातकोत्तर स्वशासी महाविद्यालय, ग्वालियर GOVT. KAMLA RAJA GIRLS P.G. AUTO. COLLEGE, GWALIOR (M.P.) INDIA

(Affiliated to Jiwaji University, Gwalior under 2(f) & 12(b) NAAC – 'A' Grade Accredited Institute)

www.krgcgwalior.org krgc@rediffmail.com Phone: 0751- 2625495, 0751-2438173

| | | | | | |
|-----|------------------|---|--|---|---------------|
| 109 | Dr. Kiran Burman | A report on plant used as medicines in our daily | Study of nano materials and scientific development in 21 st Century (ICSNSDC) | Jiwaji University Gwalior and Academy of micro scope science and technology India | International |
| 110 | Dr. Kiran Burman | Benefits of Naturopathy- Home Remedies | Recent trends in chemical Sciences | Jiwaji University Gwalior | International |
| 111 | Dr. Pratima Jain | Excess, Apparent and partial molar Volume of TBAHS and TBAC Salts in Aqueous and methanolic Solution at 303.15k | International conference on Study of nanomaterial's and Scientific Development in 21 st Century | Jiwaji University Gwalior And Academy of microscope Science and Technology, | International |
| 112 | Dr. Pratima Jain | Evaluation of Thermodynamic parameters of anionic Surfactants at Different temperatures: Alcohol Water System in presence of Urea | Recent trends in Chemical Sciences | SOS IN Chemistry Jiwaji University Gwalior (M.P.) | International |



कार्यालय प्राचार्य, शासकीय कमलाराजा कन्या स्नातकोत्तर स्वशासी महाविद्यालय, ग्वालियर GOVT. KAMLA RAJA GIRLS P.G. AUTO. COLLEGE, GWALIOR (M.P.) INDIA

(Affiliated to Jiwaji University, Gwalior under 2(f) & 12(b) NAAC – 'A' Grade Accredited Institute)

www.krgcgwalior.org krgc@rediffmail.com Phone: 0751- 2625495, 0751-2438173

| | | | | | |
|-----|-------------------|---|--|---|---------------|
| 113 | Dr. Pratima Jain | Biosurfactant: A Wonderful Cleaning Agent for Motor of spills | Smart Materials: Energy and Environment for Smart Cities (NSES-2018) | Amity University | National |
| 114 | Dr. Deepak Pathak | Heavy Metals and its effect on Health | Recent Trends in chemical sciences | School of Studies in Chemistry Jiwaji University Gwalior | International |
| 115 | Dr. Deepak Pathak | Application of Nanomaterials in Treatment of waste water | Nanomaterials initiatives & Applications | School of studies in Environmental chemistry & institute of Engineering Jiwaji University Gwalior | International |
| 116 | Dr. Sukriti Ghosh | Magnetic and Electronic properties of full Heusler Alloy Co_2NbIn | Nano Materials: Initiatives & Applications | Jiwaji University Gwalior | International |
| 117 | Dr. Sukriti Ghosh | First- Principles investigations of Structural, Elastic, | Study of nano materials and Scientific | Jiwaji University Gwalior and | International |



कार्यालय प्राचार्य, शासकीय कमलाराजा कन्या स्नातकोत्तर स्वशासी महाविद्यालय, ग्वालियर GOVT. KAMLA RAJA GIRLS P.G. AUTO. COLLEGE, GWALIOR (M.P.) INDIA

(Affiliated to Jiwaji University, Gwalior under 2(f) & 12(b) NAAC – 'A' Grade Accredited Institute)

www.krgcgwalior.org krgc@rediffmail.com Phone: 0751- 2625495, 0751-2438173

| | | | | | |
|-----|-------------------|---|---|---|---------------|
| | | Electronic, Magnetic, thermodynamic and Transport Properties of CO ₂ VGe | development in 21 st Century | | |
| 118 | Dr. Sukriti Ghosh | Magnetic, Structural and Electronic properties of CO ₂ VGe | Emerging trends and advances in Civil Engineering | Amity University, Gwalior | National |
| 119 | Dr. Sukriti Ghosh | A Study on Emotional intelligence at work place | New Age Economic reforms in India: Issues and Challenges | BVM Collage of Management Education Gwalior | National |
| 120 | Dr. Sukriti Ghosh | Dielectric & Structural Analysis of Zno Doped PvDF-PMMA Blends | Smart Materials: Energy and Environment for Smart Cities | Amity University | National |
| 121 | Dr. Sukriti Ghosh | Women Empowerment Movement in 20 th Century India | Socio-Religious Movements in 20 th century India | CIHR Foundation | National |
| 122 | Dr. Sudama Kokate | Electron Paramagnetic Resources and | 4 th International Conference on Innovation and | Tulsiramji Gaikwad patil College of Engg | International |



कार्यालय प्राचार्य, शासकीय कमलाराजा कन्या स्नातकोत्तर स्वशासी महाविद्यालय, ग्वालियर
GOVT. KAMLA RAJA GIRLS P.G. AUTO. COLLEGE, GWALIOR (M.P.) INDIA
(Affiliated to Jiwaji University, Gwalior under 2(f) & 12(b) NAAC – 'A' Grade Accredited Institute)
www.krgcgwalior.org krgc@rediffmail.com Phone: 0751- 2625495, 0751-2438173

| | | | | | |
|-----|----------------|--|---|------------------------------------|------------------|
| | | Evaluations of Some Parametres of Mn – Doped BaMgaAl10017 Phosphor | Research in Engineering Pharmaceutical and Applied Sciences | & Tech, Nagpur (M.H) India | |
| 123 | Dr. R.K Dubey | Impact of hazardous Wastes on livestock living Near Industrial Area | current trends in life science 2017 | AIOB, Amity University Gwl. | National |
| 124 | Preeti Mourya | Traditional energy sources :the need of the hour | Bioremediation Solution to world Environmental Clean up | VISM Gwalior | National |
| 125 | Preeti Mourya | | Career Fail | Govt K.R.G Collage Gwalior | Collage |
| 126 | Dr. Mohit Arya | A study of self purification system of water from channel of three lakes namely the Jadhav Sagar, Sakhya Sagar and Madhav Lakes in the Shivpuri Town, M.P., India. | New Horizons in Life Sciences Prospects and Challenges | Jiwaji University, Gwalior, M.P. | National seminar |



| | | | | | |
|-----|------------------|---|--|--|---------------|
| 127 | Dr. Seema Shukla | Pravashi Sahitya aur Paryavaran Chetna | Vishv mein Badhte Hindi ke Charan | College | International |
| 128 | Dr. Seema Shukla | Paryavaran aur Rashtawad | Rashtrawad ki Sankalpna aur uske Vividh paridhrashya | College | International |
| 129 | Dr. Charu Chitra | Arvind Adiga's Novel ' Between the Assassinations ' : A social Criticism of cast, class and communal Disharmony | 5 th International Conference on research trends in Engineering Applied Sciences and Management | Institution of Electronics and Telecommunication Engineers, Pune and ICRTESM | International |
| 130 | Dr. Charu Chitra | Role of Films in Socio Religious Movements | Socio Religious Movements in 20 th century India | CIHRF Gwalior | National |
| 131 | Dr. Charu Chitra | Shah Mubarak Abru Art and Aesthetic Sense in his works | Shah Mubarak Abru Art and Personality | Shah Mubarak Abru Art and Personality Adarsh Samaj Shiksha samiti | State |
| 132 | Dr. Charu Chitra | <i>Shah mubarak Abru and Aesthetic Sense in His Works</i> | Shah Mubarak Abru Art and Personality | Adarsh Samaj Sewa Shiksha Samiti Gwalior(Sponsored by NCPUL Delhi) | National |



कार्यालय प्राचार्य, शासकीय कमलाराजा कन्या स्नातकोत्तर स्वशासी महाविद्यालय, ग्वालियर
GOVT. KAMLA RAJA GIRLS P.G. AUTO. COLLEGE, GWALIOR (M.P.) INDIA
(Affiliated to Jiwaji University, Gwalior under 2(f) & 12(b) NAAC – 'A' Grade Accredited Institute)
www.krgcgwalior.org krgc@rediffmail.com Phone: 0751- 2625495, 0751-2438173

| | | | | | |
|-----|---------------------|---|---|---|---------------|
| 133 | Dr. Sanjay Swarnkar | Gwalior Shahar ka Vikas avam unka Paryavarniya Prabhav. | Environment, Economy and Society in the Indian context, | Shri Natnagar Shodh Samsthan, Sitamau Malwa | National |
| 134 | Dr. Sanjay Swarnkar | Sahariya Janjati ki Lok Deviya | Bhartiya Sahitya avam kala mein Gaud evam Lok Devi-Devta, | A.I.H.C.A., SoS, Vikram University, Ujjain, M.P. | National |
| 135 | Dr. Sanjay Swarnkar | Acharya Vinoba Bhave aur Rashtrawad : Ek Alochnatmak Adhyayan | Rashtrawad ke Vividh Ayam, | Swarajaya Sansthan, Bhopal | National |
| 136 | Dr. Sanjay Swarnkar | Female Bandit Reformation and Rehabilitation | Gender Issues : Possibilities and Challenges | Center for Gender Studies, Patna, Bihar | International |
| 137 | Dr. Sanjay Swarnkar | International Impact of Buddhism | Buddhist Philosophy, | Buddhist Studies Center, S.G.B.A University, Amravati | National |
| 138 | Dr. Sanjay Swarnkar | Historical Importance of Shah Mubarak Abru | Shah Mubarak Abru : Art and Personality, | Adarsh Samaj Sewa Samiti, Gwalior | State |



कार्यालय प्राचार्य, शासकीय कमलाराजा कन्या स्नातकोत्तर स्वशासी महाविद्यालय, ग्वालियर
GOVT. KAMLA RAJA GIRLS P.G. AUTO. COLLEGE, GWALIOR (M.P.) INDIA
(Affiliated to Jiwaji University, Gwalior under 2(f) & 12(b) NAAC – 'A' Grade Accredited Institute)
www.krgcgwalior.org krgc@rediffmail.com Phone: 0751- 2625495, 0751-2438173

| | | | | | |
|-----|----------------------------|--|--|---|---------------------|
| 139 | Dr. Sanjay Swarnkar | Social movements of Christian Missionaries during 20 th Century India | Socio-Religious Movements in 20 th Century India, | Central Indian Historical Research Foundation, Gwalior | National |
| 140 | Dr. Sanjay Swarnkar | Socio-Religious Importance of ISCON movement in 20 th Century | Socio-Religious Movements in 20 th Century India, | Central Indian Historical Research Foundation, Gwalior | National |
| 141 | Dr. Waseem Iftekhar Ansari | | Shah Mubarak Aabru :Shakhsiyat Aur Fan :Ek Jayeza | Adarsh Samaj Sewa Shiksha Samiti Gwalior M.P. Sponsored By N.C.P.U.L.N ew Delhi | State Level Seminar |
| 142 | Dr. Waseem Iftekhar Ansari | | Zinda Ghazal Go : Raees Uddin Raees | Gulshan e Raza Welfare Society Firozabad U.P. Sponsored By | National Seminar |



कार्यालय प्राचार्य, शासकीय कमलाराजा कन्या स्नातकोत्तर स्वशासी महाविद्यालय, ग्वालियर GOVT. KAMLA RAJA GIRLS P.G. AUTO. COLLEGE, GWALIOR (M.P.) INDIA

(Affiliated to Jiwaji University, Gwalior under 2(f) & 12(b) NAAC – 'A' Grade Accredited Institute)

www.krgcgwalior.org krgc@rediffmail.com Phone: 0751- 2625495, 0751-2438173

| | | | | | |
|-----|----------------------------|--|---|---|------------------|
| | | | | N.C.P.U.L.N ew Delhi | |
| 143 | Dr. Waseem Iftekhar Ansari | | BeeswinSadi Ki Aham Tehreek :TaraqqiPasan d Tehreek | Central Indian Historical Research Foundation, Gwalior M.P. | National Seminar |
| 144 | Dr. Anil Kumar Sharma | Nanotechnology: A powerful tool to Protect environment | International Conference on Nanomaterials : Initiatives and Application | Jiwaji University Gwalior , School of Studies in Environmental chemistry and Institute of Engineering | International |
| 145 | Dr. Alka Singh | Understanding post colonial theory in Literature perspectives on major theorists | Human Concerns and Issues in Literature social Sciences, Science and Technology | Sonubhau baswant college of Arts and Commerce, Thane Mumbai | International |



कार्यालय प्राचार्य, शासकीय कमलाराजा कन्या स्नातकोत्तर स्वशासी महाविद्यालय, ग्वालियर
GOVT. KAMLA RAJA GIRLS P.G. AUTO. COLLEGE, GWALIOR (M.P.) INDIA
(Affiliated to Jiwaji University, Gwalior under 2(f) & 12(b) NAAC – 'A' Grade Accredited Institute)
www.krgcgwalior.org krgc@rediffmail.com Phone: 0751- 2625495, 0751-2438173

| | | | | | |
|-----|----------------|---|---|---|---------------|
| 146 | Dr. Alka Singh | Servitude and oppression: A study of women surrering in Victorian era | Human Concerns and Issues in Literature social Sciences, Science and Technology | Sonubhau baswant college of Arts and Commerce, Thane Mumbai | International |
| 147 | Dr. Alka Singh | Performance management: A tool for employee development | New Age Economic Reforms in India: Issues and Challenges | BVM college of Management Education, Gwalior | National |
| 148 | Dr. Alka Singh | Indian Women in R.K Narayan's the guide: An Analytical Study | Reseistance in Literature in English | Vikram University Ujjain m.p | National |
| 149 | Dr. Alka Singh | Bharat mein Rashtrawad ka Uday evam Swaroop | Rashtrawad ki Sankalpana aur uske vividh Paridhrishya | Kendriya Hindi Sansthan Agra and Madhav college Gwalior | International |



कार्यालय प्राचार्य, शासकीय कमलाराजा कन्या स्नातकोत्तर स्वशासी महाविद्यालय, ग्वालियर GOVT. KAMLA RAJA GIRLS P.G. AUTO. COLLEGE, GWALIOR (M.P.) INDIA

(Affiliated to Jiwaji University, Gwalior under 2(f) & 12(b) NAAC – 'A' Grade Accredited Institute)

www.krgcgwalior.org krgc@rediffmail.com Phone: 0751- 2625495, 0751-2438173

| | | | | | |
|-----|------------------|---|---|---|---------------|
| 150 | Dr. Urmila Tomar | Bhartiya Samaaj me GST ka Prabhaav Ek Adhyayan | Challenges and Impact of GST in India | Jiwaji university, Gwalior | National |
| 151 | Dr. Urmila Tomar | Sanskritik Rashtrawad aur Bhartiya Bhashaye | Hindi evam Bhasha Vigyaan Vibhaag | Rani durgavati University Jabalpur | International |
| 152 | Dr. Urmila Tomar | Pravasi Hindi Sahitya mein Bhartiyata | Pravasi Hindi Sahitya: Dasha avam Disha | Dr. Bhimrao Ambedkar University, Agra | International |
| 153 | Dr. Urmila Tomar | Rashtrawad ki Sankalpana vividh Paridhrishya | Rashtrawad ki Sankalpana aur uske vividh Paridhrishya | Kendriya Hindi Sansthan, Agra and Madhav college, Gwalior | International |
| 154 | Dr. Urmila Tomar | Mahilaon ke Samajik adhikar evam suraksha Bharat ke Vishesh sandarbh me | Disability, Poverty & Human Security in India | Jiwaji university, Gwalior | National |



कार्यालय प्राचार्य, शासकीय कमलाराजा कन्या स्नातकोत्तर स्वशासी महाविद्यालय, ग्वालियर
GOVT. KAMLA RAJA GIRLS P.G. AUTO. COLLEGE, GWALIOR (M.P.) INDIA
(Affiliated to Jiwaji University, Gwalior under 2(f) & 12(b) NAAC – 'A' Grade Accredited Institute)
www.krgcgwalior.org krgc@rediffmail.com Phone: 0751- 2625495, 0751-2438173

| | | | | | |
|-----|------------------|--|---|--|----------|
| 155 | Dr. Urmila Tomar | Shri Ram Charit Maanas mein Samajik Samarsata | Shri ram Charitmanas me vaigyanik Aayam | Madhya Pradesh bhoj mukth University Bhopal | National |
| 156 | Dr. Urmila Tomar | Aadiwasi samaaj Sanrachna me Nyay vyawastha | 21 st sadi mein Aadiwasi samaaj sahitya lekhan ki chunotiya evam Sambhavnaye | Indira Gandhi rashtriya Janjaati University Amarkantak MP | National |
| 157 | Dr. Urmila Tomar | Vartmaan Paridrishya mein Shikshak avam Shiksha | Parivartit Samaaj me Adhhyapak Shiksha | Bhartiya Vidhya Mandir College of Management Education, Gwalior and Shiksha Sanskriti Uthhthan Nyas, New Delhi | National |
| 158 | Dr. Urmila Tomar | Rashtiya Shudh Sagoshth | Sahitiya or Samaj | Govt Narmada P.G College | National |
| 159 | Dr. Urmila Tomar | Bhartiya Sanskritik Parivesh main Lok parmparayo | Contribution of Folk Traditions to Indian Culture | Jiwaji University, Gwalior | National |



| | | | | | |
|-----|------------------------|--|---|--|---------------|
| | | ka Yogdaan | | | |
| 160 | Dr. Urmila Tomar | Tulsi Ek Aushadhiya Paudha: Mahatv avam Visheshtaaye | Aushadhiyo paudho ka mahatv avam unka swshthya par prabhav | Govt. Home Science PG College Hoshangaba d | National |
| 161 | Dr. Madhu Laxmi Sharma | Traditional Knowledge about some fruits used as vegetables in Gwalior region: A survey Report | Indiscriminate Development: Current Scenario & Socio- Environmenta l Challenges (IDCSC 2018) | Botanical Survey of India, Auditorium, Allahabad, India | International |
| 162 | Dr. Madhu Laxmi Sharma | Ethnomedicinal Importance of some plants in Diabetes: A Survey Report | 9 th International Congress of Environmenta l Research | Amity University, Gwalior Madhya Pradesh | International |
| 163 | Dr. Madhu Laxmi Sharma | Bhartiya Chikitsa Paddhthi aur Paryavaran | Rashtrawad ki Sankalpana aur uske vividh Paridhrishya | Kendriya Hindi Sansthan, Agra or Madhav College | International |



कार्यालय प्राचार्य, शासकीय कमलाराजा कन्या स्नातकोत्तर स्वशासी महाविद्यालय, ग्वालियर
GOVT. KAMLA RAJA GIRLS P.G. AUTO. COLLEGE, GWALIOR (M.P.) INDIA
(Affiliated to Jiwaji University, Gwalior under 2(f) & 12(b) NAAC – 'A' Grade Accredited Institute)
www.krgcgwalior.org krgc@rediffmail.com Phone: 0751- 2625495, 0751-2438173

| | | | | | |
|-----|-------------------|---|--|---|----------|
| | | | | Gwalior | |
| 164 | Dr. Sunita Sharma | Women safety & Challenges | Rashtriya Shodh Sammelan vartmaan Rashtriya Paridrishya | Shanti Vikaas evam sanskritik Ekta parishad Morena | National |
| 165 | Dr. Sunita Sharma | Determinants of work life Balance among working Women: A Structured Literature Review | Contemporary practices for Excellence in Commerce, Management & IT | Dream Valley College, Gwalior | National |
| 166 | Dr. Sunita Sharma | Women Safety & Challenges | Vartmaan Rashtriya Paridrishya | Govt. College Barela- Jabalpur and Rani Durgawati University Jabalpur | National |
| 167 | Dr. Kumar Ratnam | Swaatatyottar Bharat main Patrkrita | New Dimensions of Journalism | Rajjarshi Tandan Mukta University, Allahabad | National |



कार्यालय प्राचार्य, शासकीय कमलाराजा कन्या स्नातकोत्तर स्वशासी महाविद्यालय, ग्वालियर
GOVT. KAMLA RAJA GIRLS P.G. AUTO. COLLEGE, GWALIOR (M.P.) INDIA
(Affiliated to Jiwaji University, Gwalior under 2(f) & 12(b) NAAC – 'A' Grade Accredited Institute)
www.krgcgwalior.org krgc@rediffmail.com Phone: 0751- 2625495, 0751-2438173

| | | | | | |
|-----|-----------------|---|--|---|---------------|
| 168 | Dr Kumar Ratnam | Bhartiya Itihaas Lekhan Paridrishya tatha Sambhavnaye | Indian History Writing: Present Scenario and Prospects | History and Indian Culture University of Rajasthan and Bhartiya Itihas Sankalan Samiti Jaipur | National |
| 169 | Dr Kumar Ratnam | Concept of Globalization in Gandhian Philosophy | Bhumandalika ran avam Gandhi Chintan | UP Rajarshi Tandon mukt University Allahabad | National |
| 170 | Dr Kumar Ratnam | Dharu Lok Parampara | Janjatiya Parampara me Bhartiya Darshan | MP Bhoj University Bhopal and Akhil Bhartiya Itihas Sankalan Samiti Madhyakshe tra Bhopal | National |
| 171 | Dr Kumar Ratnam | Scope of Tourism in Gwalior | 9 th International Seminar on | S.S. (PG) College Mumukshu | International |



| | | | | | |
|-----|--------------------------|---|--|---|---------------|
| | | | International Terrorism, Tourism and Economic Health of the World | Ashram, Shahjanpur NAAC | |
| 172 | Dr Kumar Ratnam | Roots of River Sarasvati | River Sarasvati Through the Ages | Itihas Sankalan Samithi (Bharateeya) , Telangana State | National |
| 173 | Dr Kumar Ratnam | Janjaatiya Lok Jeewan avam kalyan Bhavna | Janjatiya Paramparayo me Bhartiya Darshan | MP Bhoj (Mukt) University Bhopal | National |
| 174 | Dr. savita Shrivastav | Culture Alienation in Toni Morrison's Tar Baby | Recent Advances in Languages, Literature and Social Sciences | Maulana Abul Kalam Azad Research Centre, Aurangabad | International |
| 175 | Dr. savita Shrivastav | Rashtrawad ki Sankalpana aur uske vividh Paridrishya | Rashtravad ki sankalpana aur uske vividh paridrishya | Kendriya Hindi Sansthan, Agra and Madhav College Gwalior | International |
| 176 | Dr. savita Shrivastav | A Study of Mirza Waheed's Novel. The Book of Gold | Human Concerns and Issues in Literature, Social | Sonubhau Baswant College of Arts | International |



| | | | | | |
|-----|-------------------|---|--|---|---------------|
| | | Leaves in the light of Subaltem Voice | Sciences, Commerce, Science and technology | and Commerce, Shahpur (Maharashtra) | |
| 177 | Dr. Sandhya Moghe | Vartman Samay me Purusharth ki Prasangikta | Bhartiya Darshan avam Purusharth Vyavastha | Darshan Parishad (MP and Chhattisgarh) | National |
| 178 | Dr. Krishna Singh | Pravasi Sahitya ki Dasha avam Disha | Pravasi Hindi Sahitya: Dasha avam Disha | Dr. Bheemrao Ambedkar University, Agra | International |
| 179 | Dr. Krishna Singh | 2012- 16 tak Adiwasiyo ke prati hone wale apradho ka vishleshan MP ke sandarbh me | 21 st sadi me Adiwasi Samaaj: Sahitya lekhan ki chunotiya aur Sambhavnaye | Indira Gandhi Rashtriya Janjatiya University, Amarkantak MP | National |
| 180 | Dr. Krishna Singh | 2012 se 2016 tak Adiwasiyon ke prati hone vale apradho ka vishleshan: MP ke vishesh Sandarbh me | Disability, Poverty & Human Security in India | Jiwaji University Gwalior | National |



कार्यालय प्राचार्य, शासकीय कमलाराजा कन्या स्नातकोत्तर स्वशासी महाविद्यालय, ग्वालियर
GOVT. KAMLA RAJA GIRLS P.G. AUTO. COLLEGE, GWALIOR (M.P.) INDIA
(Affiliated to Jiwaji University, Gwalior under 2(f) & 12(b) NAAC – 'A' Grade Accredited Institute)
www.krgcgwalior.org krgc@rediffmail.com Phone: 0751- 2625495, 0751-2438173

| | | | | | |
|-----|-----------------------|---|--|--|---------------|
| 181 | Dr. Krishna Singh | Rashtrawad ki Sankalpana: Vartmaan Paridrishya mein | Rashtravad ki sankalpana aur uske vividh paridrishya | Kendriya Hindi Sansthan, Agra and Madhav College Gwalior | International |
| 184 | Dr. B.B. Singh | A study on Implementation of GST in India | Challenges and Impact of GST in India | Jiwaji University Gwalior | National |
| 185 | Dr. B.B. Singh | Indian Foreign Policy: Priorities and Imperatives | India's Foreign Policy Nehru to Modi | Jiwaji University Gwalior | National |
| 186 | Dr. B.B. Singh | The Effects of Financial Incentives on Partially Disabled Workers | Disability, Poverty & Human Security in India | Jiwaji University Gwalior | National |
| 187 | Dr. Meena Shrivastava | Rashtrawad aur Gwaliori Bhasha | Sanskritik Rashtrawad aur Bhartiya Bhashaye | Rani Durgawati University, Jabalpur, MP | International |
| 188 | Dr. Meena Shrivastava | Lal Bahadur Shatri ka Prarambhik Jeewan, Karya aur Videsh Neeti | India's Foreign Policy Nehru to Modi | Jiwaji University Gwalior | National |



कार्यालय प्राचार्य, शासकीय कमलाराजा कन्या स्नातकोत्तर स्वशासी महाविद्यालय, ग्वालियर
GOVT. KAMLA RAJA GIRLS P.G. AUTO. COLLEGE, GWALIOR (M.P.) INDIA
(Affiliated to Jiwaji University, Gwalior under 2(f) & 12(b) NAAC – 'A' Grade Accredited Institute)
www.krgcgwalior.org krgc@rediffmail.com Phone: 0751- 2625495, 0751-2438173

| | | | | | |
|-----|-----------------------|---|--|--|---------------|
| 189 | Dr. Meena Shrivastava | Aajadi se purv Jan Jagran me Gwalior Riyasat ke samachar patra-Jayaji Pratap ki Bhumika | Making of Modern India | Auspices of Shodhak Jaipur | National |
| 190 | Dr. Meena Shrivastava | Lal bahadur Shastri ka prarambhik Jeewan, Kary aur Videsh Neeti | India's Foreign Policy Nehru to Modi | Jiwaji University Gwalior | National |
| 191 | Dr. Meena Shrivastava | Bhartiya Rashtrawad me Gwalior kshetra ka Yogdaan | Rashtravad ki sankalpana aur uske vividh paridrishya | Kendriya Hindi Sansthan, Agra and Madhav College Gwalior | Inetrnational |
| 192 | Dr. Meena Shrivastava | Rajrappa ke 'Maa Chhinnmasta' mandir ki Lok Parampara | Contribution of Folk Traditions to Indian Culture | Jiwaji University Gwalior | National |
| 193 | Dr. Meena Shrivastava | 20 th Shatabdi me Mahila Sashatikaran Andolan | Socio-Religious movements in 20th century India | Central Indian historical research foundation Gwalior | National |



कार्यालय प्राचार्य, शासकीय कमलाराजा कन्या स्नातकोत्तर स्वशासी महाविद्यालय, ग्वालियर
GOVT. KAMLA RAJA GIRLS P.G. AUTO. COLLEGE, GWALIOR (M.P.) INDIA
 (Affiliated to Jiwaji University, Gwalior under 2(f) & 12(b) NAAC – 'A' Grade Accredited Institute)
www.krgcgwalior.org krgc@rediffmail.com Phone: 0751- 2625495, 0751-2438173

| | | | | | |
|-----|-----------------------|---|--|--|---------------|
| 194 | Dr. Meena Shrivastava | 21 st Shatabdi me Adiwasi Sanskriti ka Avlokan | 21 st sadi me Adiwasi Samaaj: Sahitya lekhan ki chunotiya aur Sambhavnaye | Indira Gandhi Rashtriya Janjatiya University, Amarkantak MP | National |
| 195 | Dr. Meena Shrivastava | Atihasik Paripekshya me Sangit ka Rashtrawadi Swaroop | Vartmaan Rashtriya Paridrishya | Sanskritik Ekta Parishad Morena and Rani Durgawati University Jabalpur | National |
| 196 | Dr. Meena Shrivastava | Vankhandeshwer Shiv Mandir ka Atihasik Paridrishya | History, Culture & Archeological in Medieval India | Vidhya Career Research Foundation Panna (MP) | National |
| 197 | Dr. Amita Tiwari | A study of Knowledge Attitude- Sheopur District | Vartmaan Rashtriya Paridrishya | Govt. College Barela Jabalpur, and Sanskritik Ekta Parishad Morena | National |
| 198 | Dr. Amita Tiwari | To Study the Gender Differences | 9 th International Congress of Environmental Research | Amity University Gwalior | International |



कार्यालय प्राचार्य, शासकीय कमलाराजा कन्या स्नातकोत्तर स्वशासी महाविद्यालय, ग्वालियर
GOVT. KAMLA RAJA GIRLS P.G. AUTO. COLLEGE, GWALIOR (M.P.) INDIA
(Affiliated to Jiwaji University, Gwalior under 2(f) & 12(b) NAAC – 'A' Grade Accredited Institute)
www.krgcgwalior.org krgc@rediffmail.com Phone: 0751- 2625495, 0751-2438173

| | | | | | |
|-----|------------------|--|---|--|---------------|
| 199 | Dr. Amita Tiwari | Paryawaran aur Rashtrawad | Rashtravad ki sankalpana aur uske vividh paridrishya | Kendriya Hindi Sansthan, Agra and Madhav College Gwalior | National |
| 200 | Dr. Amita Tiwari | Impact of Environmental pollution on development of fetus | Recent trends in chemical Sciences | Jiwaji University Gwalior | International |
| 201 | Dr. Beena Lad | Satire on the Contemporary Indian Society in the select plays of Vijay Tendulkar | Recent Advances In Languages, Literature and Social Sciences | Maulana Abul Kalam Azad Research Centre, Aurangabad | International |
| 202 | Dr. Beena Lad | Arvind Adiga: A Writer with Social Conciousness | Contemporary Indian Writing: A Source of Cultural Strengthening | Govt. Maharaj Acharya Sanskrit College, Jaipur | National |
| 203 | Dr. Beena Lad | Folk Culture with the Advancement of – Culture in India | Contribution of Folk Traditions to Indian Culture | Jiwaji University Gwalior | National |



कार्यालय प्राचार्य, शासकीय कमलाराजा कन्या स्नातकोत्तर स्वशासी महाविद्यालय, ग्वालियर
GOVT. KAMLA RAJA GIRLS P.G. AUTO. COLLEGE, GWALIOR (M.P.) INDIA
(Affiliated to Jiwaji University, Gwalior under 2(f) & 12(b) NAAC – 'A' Grade Accredited Institute)
www.krgcgwalior.org krgc@rediffmail.com Phone: 0751- 2625495, 0751-2438173

| | | | | | |
|-----|-------------------------|---|---|---|---------------|
| 204 | Dr. Beena Lad | Bhartiya Vartmaan Paridrishya mein Rashtrawahita | Vartmaan Rashtriya Paridhrishya | Govt. College Barela and Rani Durgawati University Jabalpur | National |
| 205 | Dr. Beena Lad | Paryavaran aur Rashtrawad | Rashtrawad ki Sankalpana aur uske vividh Paridhrishya | Kendriya hindi Sansthan, Agra and Madhav College Gwalior | International |
| 206 | Dr. Jayshree Chauhan | Upbhokta Vyavhar ka Samajshastriya Adhhyan | Significance of behavioral approach to decision making in economics and business management in Indian economy | Jiwaji University, Gwalior | National |
| 207 | Dr. Santosh Kumar Yadav | Environmental Degradation Causes and future Perspective | Conservation of Energy, Economy and Environment: Future Strategies | Govt. PG (Autonomous) College, Datia | National |
| 208 | Dr. Santosh Kumar Yadav | Bioremediation: A Great tool | Bioremediation- Solution to World Environmental Clean Up | Vijayaraje Institute of Science and Management | National |



कार्यालय प्राचार्य, शासकीय कमलाराजा कन्या स्नातकोत्तर स्वशासी महाविद्यालय, ग्वालियर
GOVT. KAMLA RAJA GIRLS P.G. AUTO. COLLEGE, GWALIOR (M.P.) INDIA
(Affiliated to Jiwaji University, Gwalior under 2(f) & 12(b) NAAC – 'A' Grade Accredited Institute)
www.krgcgwalior.org krgc@rediffmail.com Phone: 0751- 2625495, 0751-2438173

| | | | | | |
|-----|---------------------------|--|--|--|---------------|
| 209 | Dr. Charanjeet Kaur | Chemical Use in Food Preservation | Recent trends in chemical Sciences | Jiwaji University Gwalior | International |
| 210 | Dr. Charanjeet Kaur | Parivartit Samaaj me Adhhyapak Shiksha | Parivartit Samaaj me Adhhyapak Shiksha | Bhartiya Vidhya Mandir College of Management Education, Gwalior and Shiksha Sanskriti Uthhthan Nyas, New Delhi | National |
| 211 | Dr. Charanjeet Kaur | Gramin avam Shahari Parivaro me Bachat avam Viniyog Sambandhi Abhivrittiyo ka Tulnatmak Adhhyan | Significance of behavioral approach to decision making in economics and business management in Indian economy | Jiwaji University, Gwalior | National |
| 212 | Dr. Charanjeet Kaur | Rashtriya Vikaas me Grah Vigyaan ka Yogdaan | Rashtravad ki sankalpana aur uske vividh paridrishya | Kendriya Hindi Sansthan, Agra and Madhav College Gwalior | National |



कार्यालय प्राचार्य, शासकीय कमलाराजा कन्या स्नातकोत्तर स्वशासी महाविद्यालय, ग्वालियर
GOVT. KAMLA RAJA GIRLS P.G. AUTO. COLLEGE, GWALIOR (M.P.) INDIA
(Affiliated to Jiwaji University, Gwalior under 2(f) & 12(b) NAAC – 'A' Grade Accredited Institute)
www.krgcgwalior.org krgc@rediffmail.com Phone: 0751- 2625495, 0751-2438173

| | | | | | |
|-----|------------------------|---|--|---|-----------------|
| 213 | Dr. Charanjeet Kaur | India's Foreign Policy Women Entrepreneurship and Rural Development in India | India's Foreign Policy Nehru to Modi | Jiwaji University Gwalior | National |
| 214 | Dr. R.C. Upadhyay | Attributes Influence consumer preference of International Brands over National Brands | Emerging Issues in Commerce, Management, IT and Education | MPS Group of college Gwalior MP | National |
| 215 | Dr. Dinesh Singh | Patel and the Idea of Nationalism | Making of Gandhian Nationalist: Life & times of Sardar Patel | Nehru Memorial Museum and Library, New Delhi | National |
| 216 | Dr. Dinesh Kumar Singh | Understanding State Politics in Bihar | State Politics in India, With Special Emphasis on the North East | North Eastern Hill University, Shillong | National |
| 216 | Dr. Dinesh Kumar Singh | Understanding Non-Brahmin Movement in Madras Presidency in Colonial Period | Socio-Religious movements in 20th century India | Central Indian historical research foundation Gwalior | National |
| 217 | Dr. Dinesh Kumar Singh | Indian Foreign Policy: Continuity and Change | India's Foreign Policy Nehru to Modi | Jiwaji University Gwalior | National |



कार्यालय प्राचार्य, शासकीय कमलाराजा कन्या स्नातकोत्तर स्वशासी महाविद्यालय, ग्वालियर
GOVT. KAMLA RAJA GIRLS P.G. AUTO. COLLEGE, GWALIOR (M.P.) INDIA
(Affiliated to Jiwaji University, Gwalior under 2(f) & 12(b) NAAC – 'A' Grade Accredited Institute)
www.krgcgwalior.org krgc@rediffmail.com Phone: 0751- 2625495, 0751-2438173

| | | | | | |
|-----|------------------------|---|---|---|-----------------|
| 218 | Dr. Dinesh Kumar Singh | Theorizing State Politics in India | Theorizing State Politics in India: Challenges and Promises | University PG College, Secunderabad in Collaboration with ICSSR-SRC, OU & ISCHE | National |
| 219 | Dr. Dinesh Kumar Singh | Recent Trends In Indian Politics | Vartmaan Rashtriya Paridhrishya | Govt. College Barela and Rani Durgawati University Jabalpur | National |
| 220 | Dr. Dinesh Kumar Singh | | Reforms in Higher Education: Challenges and Opportunities | Savitribai Phule Pune University and (SPPUCTO) | National |
| 221 | Dr. Dinesh Kumar Singh | Interrogating Human Security in India | Disability, poverty and Human security in India | Jiwaji University Gwalior | National |
| 222 | Dr Veena Shukla | Attributes Influence consumer preference of International brands over national Brands | Emerging Issues in commerce management IT and education | M.P.S Group of Collage Gwl. | National |
| 223 | Dr. Rajrani Sharma | 20 th Sadi ke Samajik andolan me Hindi Sahityakar | Socio-Religious movements in 20th century India | Central Indian historical research | National |



कार्यालय प्राचार्य, शासकीय कमलाराजा कन्या स्नातकोत्तर स्वशासी महाविद्यालय, ग्वालियर
GOVT. KAMLA RAJA GIRLS P.G. AUTO. COLLEGE, GWALIOR (M.P.) INDIA
(Affiliated to Jiwaji University, Gwalior under 2(f) & 12(b) NAAC – 'A' Grade Accredited Institute)
www.krgcgwalior.org krgc@rediffmail.com Phone: 0751- 2625495, 0751-2438173

| | | | | | |
|-----|--------------------|--|---|--|----------|
| | | “Premchand ki Bhumika” | | foundation Gwalior | |
| 224 | Dr. Rajrani Sharma | Rashtrawad ki Sankalpna aur Bhasha | Rashtravad ki sankalpana aur uske vividh paridrishya | Kendriya Hindi Sansthan, Agra and Madhav College Gwalior | National |
| 225 | Dr. Karuna Bajpai | Mahilayon mein Nirnay lene ki kshamta ka Adhhyan | Significance of behavioral approach to decision making in economics and business management in Indian economy | Jiwaji University, Gwalior | National |
| 226 | Dr. Karuna Bajpai | Naitikta avam Samajik daayitv | Emerging Issues in commerce, management, IT and education | M.P.S Group of Collage Gwalior | National |
| 227 | Dr. Sonia singh | Female- Centric Lineaments in Vijay Tendulkar's Kanyadan | New English Literatures of the Decolonized | Hawabagh Women's College Narmada Road Jabalpur (MP) | National |



कार्यालय प्राचार्य, शासकीय कमलाराजा कन्या स्नातकोत्तर स्वशासी महाविद्यालय, ग्वालियर GOVT. KAMLA RAJA GIRLS P.G. AUTO. COLLEGE, GWALIOR (M.P.) INDIA

(Affiliated to Jiwaji University, Gwalior under 2(f) & 12(b) NAAC – 'A' Grade Accredited Institute)

www.krgcgwalior.org krgc@rediffmail.com Phone: 0751- 2625495, 0751-2438173

| | | | | | |
|-----|-----------------|---|---|---|----------|
| 228 | Dr. Sonia singh | Managing Psychic Challenges of modern students | Parivartit Samaaj mein Adhyapak Shiksha | Bhartiya Vidhya Mandir College of Management Education Gwalior evam Shiksha Sanskriti Uthaan Nyas , New Delhi | National |
| 229 | Dr. Sonia singh | Natinalism and Literature | Multiple dimensions on nationalism in post independent india | Central Indian historical research Foundation, Gwalior | National |
| 230 | Dr. A.K. Singh | Vigyaapan ka Upbhokta ke kraya Nirday par Prabhav | Significance of behavioral approach to decision making in economics and business management in Indian economy | Jiwaji University, Gwalior | National |
| 231 | Dr. Alka Mourya | Maanav Jeewan mein Purusharth ka Mahatv | Bhartiya Darshan avam Purusharth Vyavastha | Darshan Parishad (MP and Chhattisgarh) | National |



कार्यालय प्राचार्य, शासकीय कमलाराजा कन्या स्नातकोत्तर स्वशासी महाविद्यालय, ग्वालियर
GOVT. KAMLA RAJA GIRLS P.G. AUTO. COLLEGE, GWALIOR (M.P.) INDIA
(Affiliated to Jiwaji University, Gwalior under 2(f) & 12(b) NAAC – 'A' Grade Accredited Institute)
www.krgcgwalior.org krgc@rediffmail.com Phone: 0751- 2625495, 0751-2438173

| | | | | | |
|-----|---------------------|--|--|--|---------------|
| 232 | Dr. Alka Mourya | Sanskritik Prishth Bhoomi aur Rashtrawad | Rashtravad ki sankalpana aur uske vividh paridrishya | Kendriya Hindi Sansthan, Agra and Madhav College Gwalior | International |
| 233 | Dr. Namita Tripathi | Hindi Sahitya aur Vartmaan paripekshya me Rashtrawad ki Sankalpana | Rashtravad ki sankalpana aur uske vividh paridrishya | Kendriya Hindi Sansthan, Agra and Madhav College Gwalior | International |
| 234 | Dr. Kalpana Sharma | 'Ramdhaari Singh Dinkar' ke Kavya mein Rashtriya Chetna ke Swar | Rashtravad ki sankalpana aur uske vividh paridrishya | Kendriya Hindi Sansthan, Agra and Madhav College Gwalior | International |
| 235 | Dr. Kalpana Sharma | Ramcharit Maanas mein Purusharth ki Sankalpana | Bhartiya Darshan avam Purusharth Vyavastha | Darshan Parishad (MP and Chhattisgarh) | National |
| 236 | Dr. Ila Shukla | Rashtrawadi Chetna Makhan Lal Chaturvedi ka Sahitya | Rashtravad ki sankalpana aur uske vividh paridrishya | Kendriya Hindi Sansthan, Agra and Madhav College Gwalior | International |
| 237 | Dr. Ila Shukla | Bhagwad Geeta mein Purusharth | Bhartiya Darshan avam Purusharth Vyavastha | Darshan Parishad (MP and Chhattisgarh) | National |
| 238 | Dr. Sudha Kushwah | Sanskritik Prishth Bhoomi mein Rashtrawad | Rashtravad ki sankalpana aur uske vividh | Kendriya Hindi Sansthan, Agra and Madhav | International |



कार्यालय प्राचार्य, शासकीय कमलाराजा कन्या स्नातकोत्तर स्वशासी महाविद्यालय, ग्वालियर
GOVT. KAMLA RAJA GIRLS P.G. AUTO. COLLEGE, GWALIOR (M.P.) INDIA
(Affiliated to Jiwaji University, Gwalior under 2(f) & 12(b) NAAC – 'A' Grade Accredited Institute)
www.krgcgwalior.org krgc@rediffmail.com Phone: 0751- 2625495, 0751-2438173

| | | | | | |
|-----|-------------------|---|---|---|----------|
| | | | paridrishya | College Gwalior | |
| 239 | Dr. Sudha Kushwah | Gwalior Sambaag mein parisyitiki paryatan | Vindhya Pradesh mein Paryatan ki Sambhavnaye evam chunotiya | Govt. Thakur Ranmat Singh College, Rewa MP | National |
| 240 | Dr. Sudha Kushwah | Hindi Sahitya mein Mahila Sashaktikaran | Parivartit Samaaj mein Adhyapak Shiksha | Bhartiya Vidhya Mandir College of Management Education Gwalior evam Shiksha Sanskriti Uthaan Nyas , New Delhi | National |
| 241 | Dr. Sudha Kushwah | Women and Development | The Emerging Contours of Centre-State Fiscal Relations in India and Dynamics of Migration in UP & Uttrakhand. | UP- Uttarakhand Economics Association (UPUEA) | National |

AWARDS:



| DR MADHULAXMI SHARMA | | |
|---|--|------|
| World Ecological Restoration Award 2018 | International Benovalent Research Foundation, Kolkata, Confederation of Indian Universities, New Delhi & World Achievers Foundation, Kolkata | 2018 |
| Lifetime Achievement Award | Blue Planet Society, Allahabad, U.P. | 2018 |
| Biodiversity Conservation Award 2018 | International Foundation for Environment & Ecology ,Kolkata & Confederation of Indian Universities, New Delhi | 2019 |

Institutes Where Students Visit For Research

1. National Jalm Institute of Leprosy, Agra
2. Central drug Research Institute, Lucknow
3. Madhav Institute of Technology & Science, Gwalior
4. Defense Research & Development Establishment, Gwalior
5. Tata Memorial Hospital, Mumbai
6. Indian Institute of Sciences, Bangalore
7. Biotech Park, Lucknow
8. National Chemical Laboratory, Pune
9. NBPGR, Delhi
10. Bhopal Sarkari Dugdh Sangh, Bhopal
11. College of Life Sciences, Cancer Hospital, Gwalior
12. Birla Institute of Medical Research, Gwalior

Institutes Using College Laboratories:

- Cancer Hospital And Research Institute, Gwalior
- Govt. P.G. College, Ambah M.P.
- College Publications: Research Journal, Magazine, Newsletter

Publication of the International Peer Reviewed Multidisciplinary Triennial Journal by College Creative Discourse is in process



- **External Funding Received: External Funding for research**

is received by following agencies:

MPCOST

ICHR

UGC

- **Research Agenda & Identify themes in Coming Year:**

- To conduct basic researches that will provide basis for developing new knowledge and applied researches that will provide contextualise prevailing knowledge in the different academic fields.
- To integrate research with Community Extension Services
- To conduct research that will provide data and information for administrative policy making in quality assurance.

Human Resources

Highlights senior faculty and administrative appointments. Describes what new areas of activity (new courses, research areas, extracurricular activities etc.) and administrative improvements are enabled by these appointments.

Faculty and Administrative appointments: Teaching and Non-teaching

| Positions | Teaching Faculty | | | Non Teaching Faculty | Technical Staff |
|---|-------------------------|----------------------|---------------|-----------------------------|------------------------|
| Sanctioned by UGC/ University/ State Govt | Prof 24 | Assistant Prof 87 | Guest Faculty | 37 | 38 |
| <i>Filled</i> | 07 | 85 | 30 | 20 | 17 |



- Besides regular appointments Visiting Professors, Resource Persons and Administrative Officials contribute in various activities such as multidisciplinary Vocational and Skill based Short Term Certificate Courses governed by Ordinance (2016-17) designed and approved by Academic Council.
- Some sessions are also arranged by these faculties for self employment and entrepreneurship trainings, activities undertaken as Institutional social responsibilities etc.
- To cater the needs of such a large strength extra teaching faculty members are required.
- To enhance the skills of students some new vocational short term certificate courses have been started. For them invited lectures have been arranged.
- Visiting Professors/Invited Guest Experts are invited to give specific and additional information according to syllabi.
- For Career Counselling, Placement Activities, Sports activities etc. Resource persons are invited for specialised purposes.
- To make students familiar with various research activities such as methodology, preparation of projects, funds arrangements etc. Experts are invited.
- Experts from Industry /Employment giving sector are invited time to time to guide the students.
- To help and assist in all these tasks nonteaching assistants / helpers are also appointed.

Events and Initiatives

Describes major events including seminars, conferences, competitions, student study trips etc. Focuses on what was achieved and learned, and how the college will follow up. Describes significant academic, administrative, student support, fund raising, and other initiatives over the past year. The description of each initiative will be structured around the need for the initiative, how it was designed, what resources were used, what results were achieved, and which features of the initiative drove success.



The College continuously makes efforts to make its students competent and for it different departments of the College organize various activities. Results and Achievements give us feedback and we follow such events and initiatives in coming years. Some Events and Initiatives of the last year which are not included in other sections of this report are given here:

| Description of Event and Title | Organizing Deptt. | Time Period From---To--- | Objective | Achievement |
|---|-------------------|----------------------------|------------|-------------|
| Awareness Rally for Education at Mahalgaon | NSS | Sevarth | 23-09-2017 | 53 |
| Plantation by NSS Voulanteers at Collectorate Area | NSS | Haritima- Harit Vasundhara | 17-12-2017 | 29 |
| Clothes Distribution at Adopted Basti Mahadji Nagar by NSS Students | NSS | Sevarth | 08-02-2018 | 24 |
| Yoga Awareness by the students of College at LNIPE | Sports Department | Sarve Santu Niramaya | 21-06-2018 | 122 |
| HIV AIDS Awareness from slogans by NSS Voulanteers at Mahalgaon | NSS | Sarve Santu Niramaya | 28-06-2018 | 54 |



| | | | | |
|---|----------------------|-------------------------|------------|-----|
| Gwalior | | | | |
| Yoga Awareness by the students of College at LNIPE | Sports Department | Sarve Santu Niramaya | 21-06-2018 | 122 |

Autonomous body of the College provided financial assistance for various activities.

10. Institutional Development under RUSA and MPHEQIP (4 pages)

Describes the college's activities over the past year under both schemes, discusses performance against strategic/institutional development plans and commitments over the previous year, identifying successes and key constraints; discusses how the college's institutional performance indicators under MPHEQIP are linked to its plans and commitments and presents data on the performance indicators in the format below; and outlines the college's plans and commitments under these schemes for the current year.

Indicator*

Baseline Value

Target for [current Value as on 30th year] September [current year]

* Institutional performance indicators contained in the PIP and in the MOU for MPHEQIP signed between the college and the DHE

Describes the college's placement cell activities, placement rate and salary statistics, and lists major employers and sectors of employment (disaggregated by gender and course studied). Profiles successful alumni and identifies emerging placement trends.



Placement Cell

| Name of Student | Program graduated from | Company Name | Pay package at appointment |
|------------------------|------------------------|---|----------------------------|
| SUJATA JAIN | | Carrier Mantra | 10000/- |
| NEELU DHAKAD | | Carrier Mantra | 10000/- |
| LABDHI JAIN | | Carrier Mantra | 10000/- |
| SUKANKSHA GUPTA | | Pidilite Trainer | 10000/- |
| MAYURI INDULKAR | | GD Goenka School, Noida | 35000/- |
| HIMANSHI SHARMA | BCOM | Wings Academy | 6000/- |
| NIDHI AWASTHI | B.H.Sc | Arya Girls Post Graduate College Jhansi | 8000/- |
| Vasundhara Raje Parmar | MSC BOTANY | Indrani Seva Samiti | 3000 |
| Parabdeep Kaur | MCOM | Indrani Seva Samiti | 3000 |
| Mubina Khan | BA | Indrani Seva Samiti | 3000 |
| Rupali Singhal | MCOM | Indrani Seva Samiti | 3000 |
| Rukhsar Gauri | BCOM | Indrani Seva Samiti | 3000 |
| Vantika Jain | BCOM | Indrani Seva Samiti | 3000 |
| POOJA SHRIVAS | BCOM | techie click innovations LLP. | 8000 |
| SHIVANI MAHOR | BCOM | techie click innovations LLP. | 8000 |
| SONAL PRAJAPATI | BCOM | techie click innovations LLP. | 8000 |
| PRACHI SAHU | BCOM CS | techie click innovations LLP. | 8000 |
| RICHA KUSHWAH | BCOM CS | techie click innovations LLP. | 8000 |
| MONALI SHAKYA | BCOM CS | techie click innovations LLP. | 8000 |
| AKSHITA JAIN | MCOM | Sandesh Academy | 10,000 |
| RAKSHA JAIN | BCOM | Sandesh Academy | 10,000 |
| ANAMIKA MADURIYA | BCOM | Sandesh Academy | 10,000 |
| TABASSUM KHAN | MCOM | Sandesh Academy | 10,000 |
| POOJA PRAJAPATI | MCOM | Sandesh Academy | 10,000 |
| SHIVA PARMAR | MCOM | Sandesh Academy | 10,000 |
| MAHIMA SAHU | BSC Math | Sandesh Academy | 9,000 |



कार्यालय प्राचार्य, शासकीय कमलाराजा कन्या स्नातकोत्तर स्वशासी महाविद्यालय, ग्वालियर
GOVT. KAMLA RAJA GIRLS P.G. AUTO. COLLEGE, GWALIOR (M.P.) INDIA
(Affiliated to Jiwaji University, Gwalior under 2(f) & 12(b) NAAC – 'A' Grade Accredited Institute)
www.krgcgwalior.org krgc@rediffmail.com Phone: 0751- 2625495, 0751-2438173

| | | | |
|----------------------|--------------|--|----------|
| MONISHA SHARMA | BCOM | Sandesh Academy | 9,000 |
| RADHIKA UDHWANI | MA HINDI | Sandesh Academy | 10,000 |
| SUJATA VERMA | BSC BIO | Sandesh Academy | 10,000 |
| MONISHA SHARMA | BCOM | Sainath Computers | 7000/- |
| ANJALI SHARMA | BCOM | Sainath Computers | 7000/- |
| SHIKHA SHARMA | MCOM | Sainath Computers | 7000/- |
| MANI CHAUHAN | BSC BIO | Swargiya Shri Lalji Charitable Foundation | 8000 |
| PRAGATI GOYAL | BCOM | Swargiya Shri Lalji Charitable Foundation | 8000 |
| RUCHI JAIN | MCOM | Swargiya Shri Lalji Charitable Foundation | 8000 |
| PREETI SONI | BCOM | Swargiya Shri Lalji Charitable Foundation | 8000 |
| SHAKSHI RAJAWAT | BSC MATH | Swargiya Shri Lalji Charitable Foundation | 8000 |
| RUCHI AGRAWAL | BSC BIO | Swargiya Shri Lalji Charitable Foundation | 8000 |
| UMA RATHORE | BCOM | SAI COMPUTER | 9000/- |
| SHREYA ROY CHOWDHARY | BCOM | SAI COMPUTER | 9000/- |
| MAHIMA SAHU | BSC MATH | SAI COMPUTER | 9000/- |
| SWEETI WADHWANI | BCOM | Brij Raj Buildings & Developers | 10,000/- |
| NISHI YADAV | BA | Brij Raj Buildings & Developers | 10,000/- |
| RESHMA YADAV | MA SOCIOLOGY | Brij Raj Buildings & Developers | 8000/- |
| PRIYANKA GAILANI | BCOM | Brij Raj Buildings & Developers | 8000/- |
| Naziya Bano | BA | Dr. Radharaman Swarnkar SHikchha Prasar Samiti | 10,000 |
| Sudha Rajput | BA | Dr. Radharaman Swarnkar SHikchha Prasar Samiti | 10,000 |
| Seema Kushwah | BA | Dr. Radharaman Swarnkar SHikchha Prasar Samiti | 10,000 |
| Jyoti Gupta | BA | Dr. Radharaman Swarnkar SHikchha Prasar Samiti | 10,000 |



कार्यालय प्राचार्य, शासकीय कमलाराजा कन्या स्नातकोत्तर स्वशासी महाविद्यालय, ग्वालियर
GOVT. KAMLA RAJA GIRLS P.G. AUTO. COLLEGE, GWALIOR (M.P.) INDIA
(Affiliated to Jiwaji University, Gwalior under 2(f) & 12(b) NAAC – 'A' Grade Accredited Institute)
www.krgcgwalior.org krgc@rediffmail.com Phone: 0751- 2625495, 0751-2438173

| | | | |
|----------------------|-----------------|---|--------|
| Rekha Kushwah | BHSC | Dr. Radharaman Swarnkar SHikchha Prasar Samiti | 10,000 |
| Neha Chandel | BHSC | Dr. Radharaman Swarnkar SHikchha Prasar Samiti | 10,000 |
| Arti Rajput | BHSC | Dr. Radharaman Swarnkar SHikchha Prasar Samiti | 10,000 |
| Swati Rajak | BHSC | Dr. Radharaman Swarnkar SHikchha Prasar Samiti | 10,000 |
| Megha Sharma | BSC | Dr. Radharaman Swarnkar SHikchha Prasar Samiti | 10,000 |
| Shivani Gupta | BSC | Dr. Radharaman Swarnkar SHikchha Prasar Samiti | 10,000 |
| Mahak Singhal | BBA | Dr. Radharaman Swarnkar SHikchha Prasar Samiti | 10,000 |
| ANMOL SHARMA | MA SOCIOLOGY | Sainath Computers | 8000/- |
| ANJANA SINGH | BA | Sainath Computers | 8000/- |
| BHAVNA RANA | BCOM | Sainath Computers | 8000/- |
| MADHURI TOMAR | BCOM | Sainath Computers | 8000/- |
| SHALU PRAJAPATI | BA | SAI COMPUTER | 8000/- |
| BHAVANA PURANDARE | BA | SAI COMPUTER | 8000/- |
| RENU RAJPUT | BCOM | SAI COMPUTER | 8000/- |
| RUBY PAL | MA SOCIOLOGY | Abhinav Info Soft | 8000 |
| POOJA CHAUHAN | MA SANSKRIT | Abhinav Info Soft | 8000 |
| SHALINI TOMAR | BCOM | Abhinav Info Soft | 8000 |
| KAMINI | BSC BIO | Abhinav Info Soft | 8000 |
| SUMAN KUMARI | MA SOCIOLOGY | Abhinav Info Soft | 8000 |
| ALISHA SAXENA | MCOM | Abhinav Info Soft | 8000 |
| MONISHA SHARMA | BCOM | siddhi enterprises | 10000 |
| ANJALI SHARMA | BCOM | siddhi enterprises | 10000 |
| SHIKHA SHARMA | MCOM | siddhi enterprises | 12000 |
| ANMOL SHARMA | MA SOCIOLOGY | siddhi enterprises | 12000 |



कार्यालय प्राचार्य, शासकीय कमलाराजा कन्या स्नातकोत्तर स्वशासी महाविद्यालय, ग्वालियर
GOVT. KAMLA RAJA GIRLS P.G. AUTO. COLLEGE, GWALIOR (M.P.) INDIA
(Affiliated to Jiwaji University, Gwalior under 2(f) & 12(b) NAAC – 'A' Grade Accredited Institute)
www.krgcgwalior.org krgc@rediffmail.com Phone: 0751- 2625495, 0751-2438173

| | | | |
|--------------|------|--------------------|-------|
| ANJANA SINGH | BA | siddhi enterprises | 10000 |
| BHAVNA RANA | BCOM | siddhi enterprises | 10000 |

Examination Cell

| EXAMINATIONS DATE | | | | |
|-------------------|---------------------------|-------------------------|------------|------------|
| Programme | Particulars | | Dates | |
| | | | From | To |
| PG | Main Examination | I & III Sem | 27-11-2017 | 12-12-2017 |
| | | II & IV Sem | 03-05-2018 | 31-05-2018 |
| | Supplementary Examination | I & III Sem | 27-11-2017 | 12-12-2017 |
| | | II & IV Sem | 03-05-2018 | 31-05-2018 |
| UG | Main Examination | I , III, V, VII, IX Sem | 10-11-2017 | 19-12-2017 |
| | | II, IV, VI, VIII, X Sem | 24-04-2018 | 29-05-2018 |
| | Supplementary Examination | I , III, V, VII, IX Sem | 10-11-2017 | 19-12-2017 |
| | | II, IV, VI, VIII, X Sem | 24-04-2018 | 29-05-2018 |

| RESULT DATE | | | | |
|-------------|------------------|--------------------------|------------|------------|
| Programe | Particulars | | Dates | |
| | | | From | To |
| PG | Main Examination | I & III Sem | 01-12-2017 | 29-12-2017 |
| | | II & IV Sem | 15-05-2018 | 02-06-2018 |
| UG | Main Examination | I yr | 25/07/2018 | 10-08-2018 |
| | | I, III, V, VII, IX Sem. | 20-01-2018 | 15/03/2018 |
| | | II, IV, VI, VIII, X Sem. | 27/06/2018 | 07/08/2018 |



| Students Greivance (Retotaling/ Revaluation) (For Preceding Session 2017-18) | | |
|---|-------------|------------------------|
| Program | | No. of Student Applied |
| UG | I Year | 03 |
| | I Sem | 05 |
| | II Sem | 04 |
| | III Sem | 77 |
| | IV Sem | 04 |
| | V Sem | 48 |
| | VI Sem | 09 |
| | X Sem | 01 |
| PG | I& III Sem | Nil |
| | II & IV Sem | Nil |

Result analysis

Result analysis was carried out and presented before the examination committee and principal for approval. Summary of the results during the session 2021-22 is as follows

| Result analysis -PG | | | | |
|---------------------|--------------------|----------|--------|--------|
| I SEM | | | | |
| Sr NO | SUB | Appeared | Passed | Pass % |
| | Urdu Lit. | 15 | 08 | 53.33 |
| | Eng. Lit | 49 | 32 | 65.31 |
| | Hindi Lit. | 40 | 30 | 75.00 |
| | Sanskrit Lit. | 26 | 18 | 69.23 |
| | Pol. Sc. | 42 | 30 | 71.43 |
| | Sociology | 40 | 30 | 75.00 |
| | History | 41 | 37 | 90.24 |
| | Economics | 26 | 18 | 69.23 |
| | Geography | 13 | 11 | 84.62 |
| | Philosophy | 07 | 05 | 71.43 |
| | Draw. & Pain. | 07 | 05 | 71.43 |
| | Music (Vocal) | 07 | 07 | 100 |
| | Music (Instrument) | 03 | 02 | 66.67 |



| | | | | |
|--|----------------|-----|-----|-------|
| | M.Com | 411 | 374 | 91.00 |
| | M.H.Sc (F & N) | 06 | 06 | 100 |
| | M.H.Sc (H & D) | 01 | 01 | 100 |
| | M.H.Sc (R & M) | 01 | 01 | 100 |
| | Mathematics | 43 | 35 | 81.40 |
| | Physics | 36 | 30 | 83.33 |
| | Chemistry | 31 | 16 | 51.61 |
| | Botany | 42 | 23 | 54.76 |
| | Zoology | 43 | 18 | 41.86 |
| | Biotechnology | 10 | 06 | 60.00 |

| Result analysis -PG | | | | |
|---------------------|--------------------|----------|--------|--------|
| II SEM | | | | |
| Sr NO | SUB | Appeared | Passed | Pass % |
| | Urdu Lit. | 09 | 08 | 88.89 |
| | Eng. Lit | 36 | 30 | 83.33 |
| | Hindi Lit. | 37 | 31 | 83.78 |
| | Sanskrit Lit. | 21 | 19 | 90.29 |
| | Pol. Sc. | 36 | 28 | 77.78 |
| | Sociology | 37 | 30 | 81.08 |
| | History | 38 | 27 | 71.05 |
| | Economics | 18 | 14 | 77.78 |
| | Geography | 11 | 11 | 100 |
| | Philosophy | 02 | 02 | 100 |
| | Draw. & Pain. | 07 | 07 | 100 |
| | Music (Vocal) | 07 | 07 | 100 |
| | Music (Instrument) | - | - | - |
| | M.Com | 391 | 359 | 91.82 |
| | M.H.Sc (F & N) | 06 | 05 | 83.33 |
| | M.H.Sc (H & D) | 01 | 01 | 100 |
| | M.H.Sc (R & M) | 01 | - | - |
| | Mathematics | 41 | 35 | 85.37 |
| | Physics | 33 | 29 | 87.88 |
| | Chemistry | 20 | 17 | 85.00 |
| | Botany | 19 | 16 | 84.21 |
| | Zoology | 28 | 23 | 82.14 |
| | Biotechnology | 08 | 06 | 75.00 |



| Result analysis -PG | | | | |
|---------------------|--------------------|----------|--------|--------|
| III SEM | | | | |
| Sr NO | SUB | Appeared | Passed | Pass % |
| | Urdu Lit. | 09 | 09 | 100 |
| | Eng. Lit | 28 | 28 | 100 |
| | Hindi Lit. | 47 | 45 | 95.74 |
| | Sanskrit Lit. | 23 | 22 | 95.65 |
| | Pol. Sc. | 30 | 27 | 90.00 |
| | Sociology | 38 | 37 | 97.37 |
| | History | 27 | 25 | 92.59 |
| | Economics | 11 | 11 | 100 |
| | Geography | 13 | 13 | 100 |
| | Philosophy | - | - | - |
| | Draw. & Pain. | 05 | 05 | 100 |
| | Music (Vocal) | 13 | 12 | 92.31 |
| | Music (Instrument) | 01 | 01 | 100 |
| | M.Com | 422 | 392 | 92.89 |
| | M.H.Sc (F & N) | 06 | 05 | 83.33 |
| | M.H.Sc (H & D) | 02 | 02 | 100 |
| | M.H.Sc (R & M) | 03 | 03 | 100 |
| | Mathematics | 36 | 32 | 88.89 |
| | Physics | 31 | 29 | 93.55 |
| | Chemistry | 12 | 12 | 100 |
| | Botany | 23 | 23 | 100 |
| | Zoology | 32 | 32 | 100 |
| | Biotechnology | 19 | 19 | 100 |

| Result analysis -PG | | | | |
|---------------------|---------------|----------|--------|--------|
| IV SEM | | | | |
| Sr NO | SUB | Appeared | Passed | Pass % |
| | Urdu Lit. | 09 | 09 | 100 |
| | Eng. Lit | 28 | 27 | 96.43 |
| | Hindi Lit. | 45 | 43 | 95.56 |
| | Sanskrit Lit. | 24 | 22 | 91.67 |
| | Pol. Sc. | 27 | 24 | 88.89 |
| | Sociology | 39 | 36 | 92.31 |
| | History | 26 | 23 | 88.46 |
| | Economics | 11 | 10 | 90.91 |



| | | | |
|--------------------|-----|-----|-------|
| Geography | 13 | 13 | 100 |
| Philosophy | 01 | 01 | 100 |
| Draw. & Pain. | 05 | 05 | 100 |
| Music (Vocal) | 12 | 12 | 100 |
| Music (Instrument) | - | - | - |
| M.Com | 403 | 379 | 94.04 |
| M.H.Sc (F & N) | 05 | 05 | 100 |
| M.H.Sc (H & D) | 02 | 02 | 100 |
| M.H.Sc (R & M) | 03 | 03 | 100 |
| Mathematics | 38 | 33 | 86.84 |
| Physics | 31 | 30 | 96.77 |
| Chemistry | 12 | 11 | 91.67 |
| Botany | 23 | 18 | 78.26 |
| Zoology | 32 | 28 | 87.50 |
| Biotechnology | 19 | 18 | 94.74 |

Result analysis -UG

| I SEM | | | | |
|-------|-----------|----------|--------|--------|
| Sr NO | SUB | Appeared | Passed | Pass % |
| | BA | 756 | 441 | 58.33 |
| | BSc(Bio) | 426 | 135 | 31.69 |
| | BSc(Math) | 427 | 193 | 45.20 |
| | B.COM | 1391 | 1140 | 81.96 |
| | B. H. Sc. | 21 | 144 | 66.67 |
| | B.C.A | 44 | 34 | 77.27 |
| | B.B.A. | 38 | 34 | 89.47 |
| | B.A. LLB | 27 | 25 | 92.59 |

Result analysis -UG

| II SEM | | | | |
|--------|-----------|----------|--------|--------|
| Sr NO | SUB | Appeared | Passed | Pass % |
| | BA | 885 | 808 | 91.30 |
| | BSc(Bio) | 414 | 253 | 61.11 |
| | BSc(Math) | 394 | 312 | 79.19 |
| | B.COM | 1283 | 1186 | 92.44 |
| | B. H. Sc. | 31 | 28 | 90.32 |
| | B.C.A | 45 | 43 | 95.56 |



| | | | | |
|--|----------|----|----|-------|
| | B.B.A. | 36 | 34 | 94.44 |
| | B.A. LLB | 29 | 27 | 93.10 |

| Result analysis -UG | | | | |
|---------------------|-----------|----------|--------|--------|
| III SEM | | | | |
| Sr NO | SUB | Appeared | Passed | Pass % |
| | BA | 685 | 652 | 95.18 |
| | BSc(Bio) | 311 | 256 | 88.75 |
| | BSc(Math) | 401 | 376 | 93.47 |
| | B.COM | 1346 | 1319 | 97.66 |
| | B. H. Sc. | 17 | 15 | 88.24 |
| | B.C.A | 37 | 34 | 91.89 |
| | B.B.A. | 52 | 51 | 98.08 |
| | B.A. LLB | 32 | 30 | 93.75 |

| Result analysis -UG | | | | |
|---------------------|-----------|----------|--------|--------|
| IV SEM | | | | |
| Sr NO | SUB | Appeared | Passed | Pass % |
| | BA | 674 | 655 | 97.18 |
| | BSc(Bio) | 291 | 277 | 95.19 |
| | BSc(Math) | 382 | 373 | 97.64 |
| | B.COM | 1346 | 1309 | 97.25 |
| | B. H. Sc. | 20 | 20 | 100 |
| | B.C.A | 36 | 34 | 94.44 |
| | B.B.A. | 53 | 53 | 100 |
| | B.A. LLB | 30 | 30 | 100 |

| Result analysis -UG | | | | |
|---------------------|-----------|----------|--------|--------|
| V SEM | | | | |
| Sr NO | SUB | Appeared | Passed | Pass % |
| | BA | 380 | 361 | 95 |
| | BSc(Bio) | 215 | 204 | 94.88 |
| | BSc(Math) | 354 | 334 | 94.35 |
| | B.COM | 1131 | 1112 | 98.32 |
| | B. H. Sc. | 15 | 14 | 93.33 |
| | B.C.A | 38 | 37 | 97.37 |
| | B.B.A. | 32 | 32 | 100 |
| | B.A. LLB | 29 | 29 | 100 |



| Result analysis -UG | | | | |
|---------------------|-----------|----------|--------|--------|
| VI SEM | | | | |
| Sr NO | SUB | Appeared | Passed | Pass % |
| | BA | 371 | 352 | 94.88 |
| | BSc(Bio) | 202 | 197 | 97.52 |
| | BSc(Math) | 344 | 333 | 96.80 |
| | B.COM | 1122 | 1085 | 96.70 |
| | B. H. Sc. | 15 | 11 | 73.33 |
| | B.C.A | 38 | 38 | 100 |
| | B.B.A. | 32 | 32 | 100 |
| | B.A. LLB | 29 | 29 | 100 |

| Result analysis -UG | | | | |
|---------------------|----------|----------|--------|--------|
| VII SEM | | | | |
| Sr NO | SUB | Appeared | Passed | Pass % |
| | B.A. LLB | 27 | 26 | 96.30 |

| Result analysis -UG | | | | |
|---------------------|----------|----------|--------|--------|
| VIII SEM | | | | |
| Sr NO | SUB | Appeared | Passed | Pass % |
| | B.A. LLB | 26 | 26 | 100 |

| Result analysis -UG | | | | |
|---------------------|----------|----------|--------|--------|
| IX SEM | | | | |
| Sr NO | SUB | Appeared | Passed | Pass % |
| | B.A. LLB | 29 | 29 | 100 |

| Result analysis -UG | | | | |
|---------------------|----------|----------|--------|--------|
| X SEM | | | | |
| Sr NO | SUB | Appeared | Passed | Pass % |
| | B.A. LLB | 30 | 30 | 100 |



Looking Ahead

Lays out the college's priorities and goals over the coming year. Describes key initiatives planned, what each initiative is expected to achieve, and how it will contribute to the college's long term development.

| S. No | Head (administrative/ academic, etc) | Nature of proposal | Expected Outcome |
|-------|--------------------------------------|---|---|
| 1. | Academic | Start of Certificate Courses from the Pool | Vocational Skill Enhanced |
| 2. | Academic | Conduction of Orientation Courses/ Faculty Development Program/ Training Programs/ Field Visit/ Survey etc. | Upgradation of Faculty |
| 3. | Academic | Conduction of Internship, Project Works, Hands on Training Programs in Collaboration | Promotion to Collaboration |
| 4. | Academic | Establish Dept. Of Botany, Mathematics, Urdu as Research Centre | Promotion to Research |
| 5. | Academic | Establishing Central Instrumental facility centre | Promotion to Research |
| 6. | Academic | Publication of multidisciplinary Research Journal | Promotion to Acknowledgement and Acceptance of Research |



| | | | |
|-----|----------------|---|---|
| | | | Work |
| 7. | Academic | Incentives to quality and need based Research & Publication | Promotion to Research |
| 8. | Academic | Promotion to Innovations, Patent and Consultancy | Spread of Research Outcomes Globally |
| 9. | Academic | Online Question Bank | Pattern and Trend of Questions familiar |
| 10. | Academic | Development of Medicinal Herbal Garden | Promotion to Subject and Understanding |
| 11. | Infrastructure | Establishment of Language Lab fully equipped | Learning with modern facilities |
| 12. | Infrastructure | Smart library and Audio-Video system for library fully equipped | Learning with modern facilities |
| 13. | Infrastructure | Virtual, Multimedia and Smart Class Rooms | Learning with modern facilities |
| 14. | Infrastructure | Upgradation of Academic Cell | Strengthen academic back bone |
| 15. | Infrastructure | Development of Placement Cell | Placement Activities Increased |
| 16. | Support System | Expansion of Reprographic facilities | Enhanced Facilities |



| | | | |
|-----|----------------------|---|--|
| 17. | Support System | IP based surveillance system, Wi-Fi campus, | Enhanced Security in Campus |
| 18. | Infrastructure | Extension of science block and Employment Cell | More space for increasing number of students |
| 19. | Infrastructure | Renovation in Dept. Of Home Science | People can work more efficiently |
| 20. | GER | Field survey in catchment area, Campaign College Chalo Abhiyan, Meeting with Stakeholders | Increased Enrolment |
| 21. | GER | Online Publicity through College Website, Digital Advertisement, Social Media, electronic & print media | Increased Enrolment |
| 22. | Career and Placement | Counselling and Guidance for Academic Counselling, Financial Management and Arrangements, Job oriented programs, personality Development, Women Entrepreneurs, etc. | Increase in Placement and future Entrepreneurs |
| 23. | Career and Placement | Organization of Job oriented and skill based Programs such as Trainings, Workshops, Lectures, Visits, Internships etc. | Increase in Placement and future Entrepreneurs |



कार्यालय प्राचार्य, शासकीय कमलाराजा कन्या स्नातकोत्तर स्वशासी महाविद्यालय, ग्वालियर
GOVT. KAMLA RAJA GIRLS P.G. AUTO. COLLEGE, GWALIOR (M.P.) INDIA
(Affiliated to Jiwaji University, Gwalior under 2(f) & 12(b) NAAC – 'A' Grade Accredited Institute)
www.krgcgwalior.org krgc@rediffmail.com Phone: 0751- 2625495, 0751-2438173

| | | | |
|-----|--------------------------|---|--|
| 24. | Career and Placement | Training and Coaching Classes for Competitive Exams, Marketing, Public Dealing, 'Earn while you Learn', Capacity Building Programs etc. | Increase in Placement and future Entrepreneurs |
| 25. | Career and Placement | Linkages with Industries and Employment giving Sectors | More Opportunities for Employment |
| 26. | Career and Placement | Organization of Placement Activities, Career Fair | More Opportunities for Employment |
| 27. | Counselling and Guidance | Legal Counselling, Awareness Programs on Legal Rights, Self-defence, Skill training programs, Leadership training program for Women | Promotion to Women Independence |
| 28. | I.C.T. savvy women | Knowledge & Research through ICT, Globalisation, Fashion and market value, Opportunities in higher education, health awareness | Future Competent women |
| 29. | Equal Opportunity | Development of Equal Opportunity Cell, Short Term Courses for Equal Opportunity, Establishment of Book bank for differently abled students, Launching mooc, | Promotion to Deprived Categories |
| 30. | Equal | Special Mentoring to SC/ST/OBC/Minority/ED/PhD, | Promotion to Weaker |



| | Opportunity | Nomination of Brand Ambassador for SC/ST/OBC/Minority/ED | Section |
|-----|---|---|---|
| 31. | Facilities for Needy | E-library (Brail), E-notice board {Brail}, Reading software, Screen Magnification Software, Brail Display and Voice Recognitive Software, Wheel Chairs and other aids | Assistance in Walking Hand in Hand |
| 32. | Resource Management and Clean, Green Campus | Echo-friendly campus, Echo-friendly new construction, Development of Cleanliness drive, Application of Environmental Impact Assessment | Living in Healthy Environment |
| 33. | Human Resource Management | Academic and Financial Support from Alumni, Passed out Student Tracking Mechanism | Bonding with Seniors receiving their Support and Guidance |
| 34. | Administrative (e-Skill Promotion) | ICT training for teaching and non-teaching staff, Development of website, Video conferencing/Tele conferencing setup, E-learning centre, Data based creation and maintenance, M.I.S. Software for internal administration | Proceeding with Modern Techniques |
| 35. | Administrative | Training programs for officials, teachers and administrative staff, Personal record maintenance, Digitalization of Library, Annual | Better and Fast Out Put |



| | | | |
|-----|-------------------------|--|--|
| | | Maintenance Contract | |
| 36. | Services | Promotion to E-services to students, parents and staff, Online examination service, Student facilities (canteen, student help centre, sport infrastructure) | Better and Fast Services |
| 37. | Contribution to Society | Establishment of Women Study Centre, Rural women empowerment, , Adoption of Village - Barai, Block – Panihar, Tehsil – Ghatigaon, Dist. – Gwalior under program 'DARPAN' for it's all round development in Education, Health Awareness, Malnutrition - Causes and Cures, Opportunities in Various Fields, Preserving their Culture | Sensitive and Responsible Girls towards Society and Help of at least one village |

Ph.D Awarded

| | |
|--|--|
| Name of the college | |
| 7. PhDs Awarded | |
| Number of PhDs awarded between 1 st July 2017 to 30 th June 2018 | |



| Discipline Group | Number |
|--------------------|--------|
| Botany | 0 |
| Chemistry | 0 |
| Commerce | 3 |
| Drawing & Painting | 1 |
| Economics | 2 |
| English | 5 |
| Geography | 0 |
| Hindi | 0 |
| History | 3 |
| Home Science | 4 |
| Music | 0 |
| Physics | 0 |
| Political Science | 2 |
| Psychology | |
| Sanskrit | 1 |
| Sociology | 1 |
| Zoology | 0 |
| All disciplines | 22 |

Data Source: AISHE

Name of the college

8. Research and consultancy

Revenue generated through externally funded research and consultancies over

[previous financial year]



कार्यालय प्राचार्य, शासकीय कमलाराजा कन्या स्नातकोत्तर स्वशासी महाविद्यालय, ग्वालियर
GOVT. KAMLA RAJA GIRLS P.G. AUTO. COLLEGE, GWALIOR (M.P.) INDIA
 (Affiliated to Jiwaji University, Gwalior under 2(f) & 12(b) NAAC – 'A' Grade Accredited Institute)
www.krgcgwalior.org krgc@rediffmail.com Phone: 0751- 2625495, 0751-2438173

| Discipline Group | Number of active projects | Total Revenue Generated (Rs. lakhs) |
|------------------|---------------------------|-------------------------------------|
| Zoology | 1 | 155000/- |
| English | 1 | 175000 |
| Home Science | 1 | 160000/- |
| History | 1 | 50,000 |
| Music | 1 | 82500/- |
| Music | 1 | 107500/- |
| Home Science | 1 | 122500/- |
| Home Science | 1 | 919000/- |

(a) Hostel occupancy as on 01st July 2017 to 30th June 2018

| (a)Hostel occupancy as on 01 st July 2017 to 30 th June 2018 | | |
|--|--------|---------------------|
| Capacity : 172 | | Number of residents |
| Males: Nil | | |
| Females: 103 | | |
| SC | Male | Nil |
| | Female | 31 |
| ST | Male | Nil |



| | | |
|----------------|--------|-----|
| | Female | 2 |
| General | Male | Nil |
| | Female | 70 |
| Total | Male | Nil |
| | Female | 103 |

Paper Published in Journals:

| Number of papers published in peer-reviewed journals between 1 st July 2017 to 31 st June 2018 | | | |
|--|----------------------------|----------------------|---|
| Discipline Group | Number of papers published | | Number of published papers through cross-institute research collaboration |
| | International Journals | National Journals | |
| Botany | 01 | 02 | - |
| Zoology | 00 | 01 | - |
| Chemistry | 00 | 01 | - |
| Physics | 00 | 06 | - |
| Mathematics | 02 | 01 | - |
| Computer Science | 00 | 00 | - |
| Biotechnology | 00 | 00 | - |
| Home Science | 02 | 16 | - |
| Commerce | 04 | 01 | - |
| Hindi | 04 | 11 | - |
| English | 07 | 06 | - |
| Urdu | 02 | 05 | - |



कार्यालय प्राचार्य, शासकीय कमलाराजा कन्या स्नातकोत्तर स्वशासी महाविद्यालय, ग्वालियर
GOVT. KAMLA RAJA GIRLS P.G. AUTO. COLLEGE, GWALIOR (M.P.) INDIA
(Affiliated to Jiwaji University, Gwalior under 2(f) & 12(b) NAAC – 'A' Grade Accredited Institute)
www.krgcgwalior.org krgc@rediffmail.com Phone: 0751- 2625495, 0751-2438173

| | | | |
|-----------------|----|----|---|
| Sanskrit | 02 | 01 | - |
| Philosophy | 00 | 01 | - |
| Psychology | 04 | 00 | - |
| History | 01 | 21 | - |
| Sociology | 00 | 00 | - |
| Political Sc. | 01 | 00 | - |
| Economics | 02 | 00 | - |
| Geography | 02 | 00 | - |
| Music | 00 | 01 | - |
| Draw. & Paint. | 01 | 06 | - |
| Law | 01 | 02 | - |
| All disciplines | 35 | 83 | - |